

# Intelligent Detection for CT Image of COVID-19 using Deep Learning

Jingxin Liu

Department of Radiology

China-Japan Union Hospital of Jilin University

Changchun, China

Lihui Zu

Department of Radiology

China-Japan Union Hospital of Jilin University

Changchun, China

Yutong Zhong

Electronic Information Engineering College

Changchun University of Science and Technology

Changchun, China

Zhong Zhang

R&D Department

WX Medical Technology Co.

Changchun, China

Hairihan Wang

Personnel Department

Affiliated Hospital of Inner Mongolia University for the  
Nationalities

Changchun, China

**Abstract—Purpose:** Use artificial intelligence technology to identify the characteristics of covid-19 in CT images, quickly screen COVID-19 patients, achieve rapid diversion and treatment of suspected patients, reduce the risk of infection and control the spread of the disease.

**Materials and methods:** This article combines deep learning target detection and image classification methods to study the CT images of COVID-19 patients. By extracting and analyzing the features of lesions in different periods, a new detection model of covid-19 based on time-spatial sequence convolution is obtained. The algorithm is based on a recurrent neural network structure and a 2D convolutional layer structure.

**Results:** The spatiotemporal sequence convolution kernel based on time and space attributes can effectively extract the latent image semantic features of multiple image data of COVID-19 patients. By comparing with Faster RCNN, YOLO3 and SSD algorithm models, the detection method proposed in this paper can obtain more accurate comprehensive detection results.

**Conclusion:** The time-spatial sequence convolution model can quickly complete the automatic detection of COVID-19 and improve the efficiency of preliminary diagnosis. By correlating images from different stages of the same patient, more accurate auxiliary preliminary screening results can be obtained.

**Keywords-component; COVID-19; CT images; convolution neural network; detection**

## I. INTRODUCTION (HEADING 1)

Caused by the novel coronavirus broke out between late 2019 and early 2020 acute respiratory disease is a new type of disease. On February 12, 2020, the World Health Organization (WHO) named it the Coronavirus Disease 2019 (COVID-19) [1], that has attracted considerable attention from the international communities [2]. COVID-19 is highly infectious, and the virus can spread through droplets and contact. As of June 22, 2020, approximately 9 million people have been infected around the world.

Clinically, the virus has clinical manifestations of respiratory diseases, including cough, fever and lung inflammation [3], and it can also lead to acute respiratory distress syndrome as well [4-8]. Although COVID-19 has a relatively lower mortality rate, its spread rate is astonishing [9,10], and it can even spread through asymptomatic virus carriers, compared with the previous severe acute respiratory syndrome (SARS) and Middle East respiratory syndrome (MERS)[11,12]. The common symptoms of COVID-19 manifests fever, cough and dyspnea. In terms of susceptible people, especially the aging people with comorbidities, the disease may cause fatal cardiopulmonary complications potentially[13]. Therefore, the early recognition of the disease can help individual patient to accept treatment quickly allow

earlier adequate isolation control the infected person and prevent the rapid spread of the virus, which can avoid the infection of larger populations from the perspective of public health [14].

In clinical practice, real-time reverse transcription polymerase chain reaction (RT-PCR) is the gold standard to diagnose the infection of COVID-19 [15]. RT-PCR technology detected ribonucleic acid in nasopharyngeal swabs and also confirmed COVID-19 patients. According to current clinical experiences, RT-PCR for the determination of viral RNA in sputum or nasopharyngeal swabs, has a high probability of early false negatives, so many suspicious patients must repeat the test every few days to finalize the diagnosis [16], and each test takes 48 hours. Therefore, this technology has various limitations, such as lack of kits, long detection time and lagging results [17]. Therefore, it is necessary to use CT scan images as an auxiliary detection method for COVID-19 screening.

At present, CT has been adopted as a standard method to diagnose lung diseases, and compared with chest radiography, it has higher sensitivity and specificity. Before COVID-19 patients display some clinical symptoms, their chest CT images will have some specific characteristics. In summary, some typical imaging features of chest CT in COVID-19 patients are mainly multi-lung, patchy glass density shadows, mainly distributed in the bronchiole or small honeycomb bronchial vascular bundle and pleura. As the lesion progresses, multiple natural lesions may be merged, such as frosted glass shadows, consolidation and nodules, and there may be fibrotic lesions. Fibrotic lesions are characterized by thickening and deformation of local lung texture.

As an integral part of the evaluation of COVID-19, although CT scan is important, it still has some drawbacks, including the fact that with the outbreak of the disease, and its continue the number of radiologists is far less than the number of patients, leading to the result that early and mild patients win no access to effective and timely treatments [17]. Under such circumstances, there is an urgent need to develop a smarter, faster and more effective detection algorithm. Based on the artificial intelligence (AI), the diagnosis of COVID-19 has become a more sensible solution. Compared with other existing methods. Such algorithms can analyze the results of CT scan images in a short time than other existing methods [18,19], which can save more time and avoid direct contact.

## II. RELATE WORK

There were relevant studies on AI algorithm that was applied to the detection of COVID-19. From multiple sources, Qiu H [12] established a comprehensive data set of X-ray and CT scan images, and adopted deep learning and transferred learning algorithms to provide a simple and effective COVID-19 detection technology. A dual sampling attention network [20] was proposed to classify the different manifestations between COVID-19 and community-acquired pneumonia (CAP) infections. In order to focus on the lungs, a lung mask was applied to suppress the image context of non-lung regions in chest CT. At the same time, the online mechanism increased the focus on the deep learning model for the better focus on the lung infectious area. In this way, the model helps explain the evidence for the automatic diagnosis of COVID-19. The experimental results also proved that the proposed online attention refinement

can effectively improve the classification performance. A quantitative system based on deep learning can automatically carry out CT segmentation of the chest CT infectious area and the entire lung, and establish a VNet neural network, which can segment the COVID-19 infectious area in the CT scan image [19]. In order to accelerate the speed of data labeling, human-in-the-loop optimization was adopted to label each situation.

Artificial intelligence (AI) algorithm is to combine the chest CT manifestations and clinical symptoms, exposure history, and laboratory tests to quickly diagnose COVID-19 positive patients.

This study combines deep learning target detection and image classification methods to analyze and study the CT signs of COVID-19 patients' lesions, also, analyze the lesion characteristics at different stages. Based on the convolution of the time-space series, a fast detection algorithm model of the CT image lesion area is proposed, which can help the medical staff to perform the preliminary screening of COVID-19, shorten the hospitalization time of the patient, and reduce the risk of disease as well as reduce the risk of nosocomial infection to a certain extent. At the same time, the algorithm model proposed in this paper can obtain more reasonable reasoning results of CT signs of lesions through the correlation analysis of CT images of patients in different periods, help doctors to judge the condition quickly, and provide auxiliary basis for diagnosis and treatment.

The remainder of the study is organized as follows. In Section II, related works are reviewed. In Section III, introducing the COVID-19 diagnosis method based on artificial intelligence followed by the details of each part. In Section IV, we describe the evaluations 45 based on the experimental results. In Section V, we summarize the proposed method and outline the study's conclusions.

## III. RESEARCH METHODOLOGY

This paper analyzes and studies the desensitized CT images from 721 COVID-19 patients in different hospitals, and 600 images as training data for the detection model of COVID-19. The data set is displayed in Figure 1. The detection method for COVID-19 CT lesions is composed of three parts, including target area selection, object detection model and specific convolutional layers for spatiotemporal feature extraction.

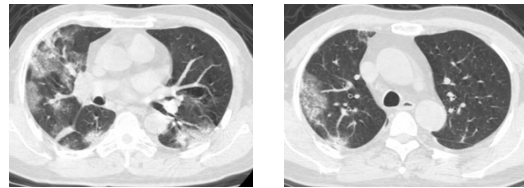


Figure 1. The data set of COVID-19

Note: Different scan layers of CT images of the same COVID-19 patient

### A. Segmentation of target areas

The first step of lesion detection from COVID-19 CT images is to segment the lung areas. After the initial segmentation, some specific geometric morphology operations are then performed to obtain the required regions. We labeled lung contours scan-by-scan on CT images from 50 patients with COVID-19 and other

30 healthy people. The labeled sample is shown in Figure 2 and each image scan paired with its mask were prepared for training. In order to train a robust model, a part of training data is pre-enhanced with multiple geometric morphological data augmentations.

According to the comprehensive analysis of data distribution, we performed multiple data enhancements around (-500, 1600) window-width-window-level to improve the stability of image segmentation. Due to the relevant features of target data, we designed a 2D lung areas segmentation model using encoder-decoder mode. The model consists of multiple continuous convolutional layers and pooling layers. Features are extracted all the way down, and feature fusion is used on the last convolutional layer to complete feature extraction by filling in missing information that is related to feature maps (such as position information, and edge information, etc.).

The model completes preliminary segmentation of the lung field, as shown in Figure 3. Additional geometric morphological operations, such as corrosion, expansion, and hole filling provide the final region of interest(ROI) that is required by lesion detection.

The above process reduces the extraneous areas for subsequent lesion detection, and significantly improves the model efficiency.

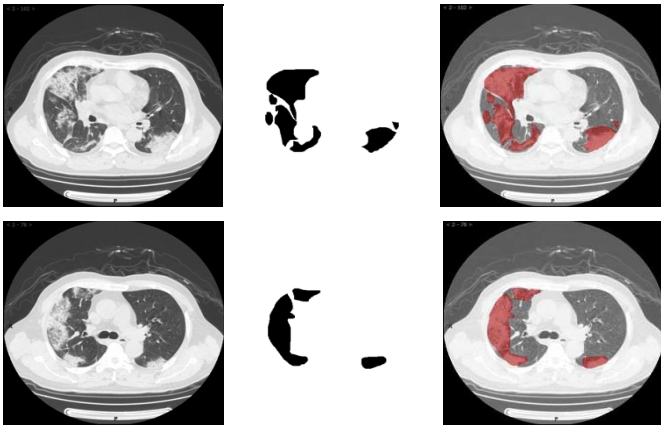


Figure 2. Lung areas and the corresponding masks

Note: The first column is the CT scan of the lung area; the second column is the mask corresponding to the lesion; the third column is the segmentation result of COVID-19.

### B. Lesion detection

In lesion detection model, two specific advanced feature extractors in lesion detection model was designed: spatial semantic convolutional layer and time semantic convolutional layer. Due to the spatial continuity of CT images, there is a specific correlation between the spatially adjacent scans. In general, object detection focuses more on 2D feature association. Obtaining feature maps only in single-scan dimension will lose important spatial context, resulting in loss of detection accuracy.

According to the CT imaging diagnosis guidelines of COVID-19, imaging signs were divided into three different

periods including early stage, advanced stage, and severe stage. Many patients had corresponding data in different periods, and medical researches proved that there were some correlations among multiple-period imaging manifestations. If the transformation features from images with time dimension can be additionally extracted during the lesion detection, potential semantic information of the lesion signs at different stages may be mined. Although the accuracy was improved, the output of model could be more meaningful for auxiliary diagnosis.

The design of spatial semantic convolutional layer was mainly a series of bidirectional recurrent 2D-convolutional operation set. Considering the spatial continuity of CT images, the closer scans may have higher correlation. The model captured image semantic information in batched scans through successive convolutional layers, and then added two spatial semantic convolutional layers to extract the spatially continuous features of lung. Afterwards, the feature maps from each layer were up-sampled as part of the input to the next two corresponding temporal semantic convolution layers.

The time semantic convolutional layer was basically composed of several unidirectional recurrent 2D-convolutional operations. According to the researches on the COVID-19 CT image signal, it was more reasonable to extract the context semantic features in the unidirectional time dimension. Subsequently, these feature maps would go through two similar convolutional layers to complete the final extraction. The architecture flow of this part is shown in Figure 3.

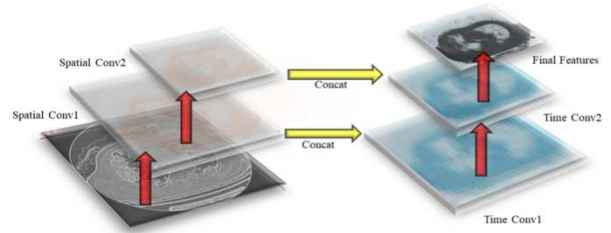


Figure 3. Lesion detection architecture flow

## IV. EXPERIMENTAL RESULTS

### A. Data and models

In order to verify the relationship between the complexity of the one-way time series convolution and the two-way time series convolution, the experiment created two model structures with only time sequence difference. The test data of the experiment consisted of the desensitized CT images of the remaining 121 COVID-19 patients and other 500 healthy people. The tested algorithm structure included Faster R-CNN, YOLO3, SSD, and the algorithm model based on space-time sequence convolution that was proposed in this paper—Space-time-Net, that was divided into two structures: one-way time series and two-way time series, abbreviated as Space-Time1 and Space-Time2. The same test data set was used to test the sensitivity of the patient

identification and the accuracy of the target detection to the above model.

For the verification of the effect of multi-stage image data on the experimental results, the test was divided into two stages. In the first stage, the images of each patient was collected at only one time point for testing. In the second stage, after the relevant supplement of the relevant images was completed, the patients with multi-stage image data were tested. Through the two-stage test, you can verify the influence of single spatial image and spatiotemporal sequence image on the accuracy of model, and evaluate whether the model can effectively apply the characteristics of temporal and spatial sequence to obtain more accurate test results.

### B. Analysis of experimental results

The relevant data results of the first stage experiment was revealed in figure 4. Without the correlation of the patient's images in all stages, the difference in accuracy and sensitivity of YOLO3 was relatively large. The model proposed in this paper has good properties of accuracy and sensitivity under two structures (Space\_Time1 and Space\_Time2).

By the experimental data in the first stage, it can be concluded that in the first testing stage, Space\_Time2, with a time series bidirectional structure has higher target detection accuracy. It loses a certain degree of sensitivity for the complexity of the bidirectional sequence. Space\_Time1 with a time series unidirectional structure has better sensitivity, indicating that the complexity of the algorithm model structure has a certain impact on the final effect of the model.

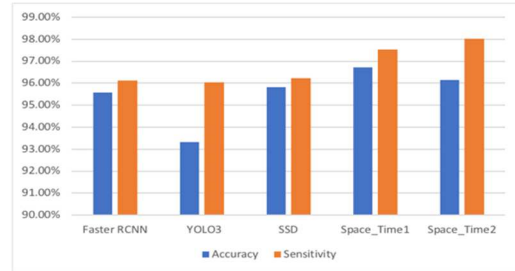
The relevant data results for the second stage experiment were displayed in figure 5. When the images from all stages of patient were correlated, the difference in accuracy and sensitivity of YOLO3 was still relatively large. Compared with the experimental data in the first stage, the sensitivity and accuracy of the three comparison models improved. Under both structures, the model proposed in this paper revealed better accuracy and sensitivity than the first stage. Through the analysis of the model structure and the characteristics of experimental data, when the same patient has image data of multiple time periods, the time-space series convolutional layer of Space-Time-Net can extract the semantic features of the latent images related to it. The time series were valid and more accurate comprehensive test results were obtained.

According to the analysis data from two sets of experiments, it can be concluded that the image data with time series attributes provided more semantic features of the images. In this paper, a time-space sequence convolution kernel extraction algorithm based on time-series was designed, and more accurate detection results were obtained. The trade-off between structural complexity and interpretability is the future optimization direction of the COVID-19 detection model.

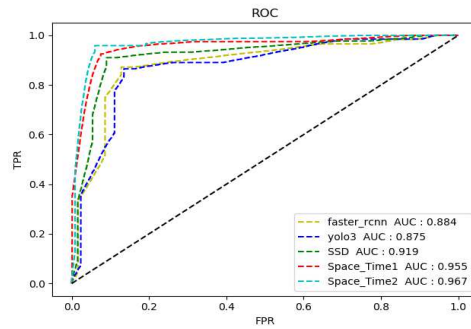
## V. CONCLUSION

Based on time-space sequence convolution, this paper proposes a COVID-19 CT imaging lesion detection model. According to the relevant medical research on the signs of the lesions, we completed the design of various deep learning models from CT image lung parenchyma segmentation to lesion

detection that can quickly complete the automatic detection of COVID-19 cases. After associating images from different stages of the same patient, more accurate preliminary screening results can be obtained. Experimental data exhibits that the model has properties of high accuracy and stability, provides good auxiliary support for the imaging diagnosis of COVID-19, and has a positive significance for the prevention and control of epidemics.

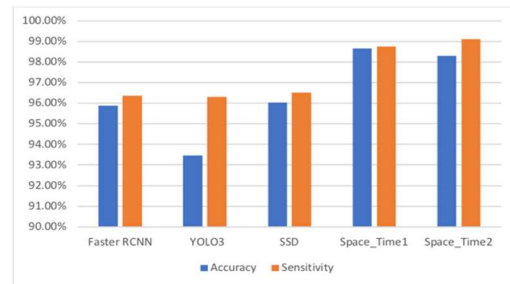


(a) Comparison of accuracy and sensitivity

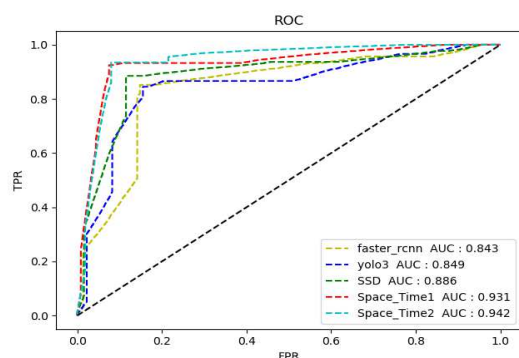


(b) Comparison of AUC and ROC curve

Figure 4. Comparison experiment results of stage I



(a) Comparison of accuracy and sensitivity



(b) Comparison of AUC and ROC curve

Figure 5. Comparison experiment results of stage II

Note: (a) The ROC curve and AUC value corresponding to the comparison experiment results of the first stage model. (b) The ROC curve and AUC value corresponding to the comparison experiment results of the model in the second stage.

## VI. DISCUSSION

The facts proved that even RT-PCR, the gold standard diagnostic test, has a high probability of producing false negative results. Relying on AI-based chest CT detection as an auxiliary diagnostic method can help doctors establish more complete patient assessment.

In the two trials in this article, the first experiment did not correlate the images of the same patient in different periods, only the CT images at a single time point. After the loss of each model gradually stabilizes, take the stabilized models saved in 5 different epochs for experiments to obtain the average sensitivity and accuracy. The model with the smallest verification set loss in the above 5 epochs was used to draw the

ROC curve and calculated the AUC value of the two-stage experiment.

Early diagnosis of the disease is still the most difficult distinction between COVID-19 and other causes of pneumonia for the overlap of their manifestations. Therefore, this article only does a binary classification experiment of COVID-19 data and healthy person data for the preliminary screening of COVID-19. The focus of this paper is the certain rules in the changes with the characteristics of the lesions over time. The convolution structure designed in this paper extracts the features of this part to improve the accuracy of lesion recognition. Its contribution is to find that the time dimension features can improve the accuracy of lesion recognition or segmentation, and the convolutional layer that is used to extract time dimension features has a better effect.

Future researches will investigate the possibility of precise distinction between COVID-19 normal population and conventional pneumonia, integrate these algorithms into routine clinical workflows to help radiologists accurately diagnose COVID-19.

## ACKNOWLEDGMENT (HEADING 5)

This work was funded by the National key R&D plan project (2018YFC1315604; 2018YFC0116900), the Jilin Province Science and Technology Development Plan Project (20200901017SF) and the Program for JLU Science and Technology Innovative Research Team (JLUSTIRT) (2017TD-27)

## REFERENCES

- [1] F. Shi, J. Wang, J. Shi and Z. Wu, "Review of Artificial Intelligence Techniques in Imaging Data Acquisition, Segmentation and Diagnosis for COVID-19." *IEEE Reviews in Biomedical Engineering* PP.99:1-1.
- [2] H. S. Maghdid, A. T. Asaad, K. Z. Ghafoor, A. S. Sadiq and M. K. Khan, "Diagnosing COVID-19 Pneumonia from X-Ray and CT Images using Deep Learning and Transfer Learning Algorithms", 2020. WHO Director-General's remarks at the media briefing on 2019-nCoV on 11 February 2020, (11 February 2020), [Online]. Available: <https://www.who.int/dg/speeches/detail/who-director-general-s-remarks-at-the-media-briefing-on-2019-ncov-on-11-february-2020>.
- [3] C. Huang, Y. Wang, X. Li, et al. "Clinical features of patients infected with 2019 novel coronavirus in Wuhan, China." *The Lancet* 395.10223, 2020.
- [4] Q. Li, X. Guan, P. Wu, et al. Early Transmission Dynamics in Wuhan, China, of Novel Coronavirus-Infected Pneumonia. *N Engl J Med* 2020 Jan 29 [Epub ahead of print].
- [5] N. Zhu, D. Zhang, W. Wang, et al. A Novel Coronavirus from Patients with Pneumonia in China, 2019. *N Engl J Med* 2020 Jan 24 [Epub ahead of print].
- [6] World Health Organization. Novel coronavirus (2019-nCoV). Situation report 22. Geneva, Switzerland: World Health Organization, 2020. [https://www.who.int/docs/default-source/navirus/situation-reports/20200211-sitrep-22-ncov.pdf?sfvrsn=bc7da517\\_2](https://www.who.int/docs/default-source/navirus/situation-reports/20200211-sitrep-22-ncov.pdf?sfvrsn=bc7da517_2). Published January 12, 2020. Accessed February 8, 2020.
- [7] R. L. Graham, E. F. Donaldson, R. S. Baric. A decade after SARS: strategies for controlling emerging coronaviruses. *Nat Rev Microbiol* 2013;11(12):836-848.
- [8] Z. Wu and J. M. McGoogan, "Characteristics of and important lessons from the coronavirus disease 2019 (covid-19) outbreak in china: summary of a report of 72 314 cases from the chinese center for disease control and prevention," *Jama*, 2020.
- [9] E. Mahase, "Coronavirus: covid-19 has killed more people than sars and mers combined, despite lower case fatality rate," 2020.
- [10] Y. Bai, L. Yao, T. Wei, and F. Tian, Presumed Asymptomatic Carrier Transmission of COVID-19. *JAMA*. 2020. Epub 2020/02/23. doi: 10.1001/jama.2020.2565. PubMed PMID: 32083643; PubMed Central PMCID: PMC7042844.
- [11] H. Qiu, J. Wu, L. Hong, Y. Luo, Q. Song, and D. Chen, Clinical and epidemiological features of 36 children with coronavirus disease 2019 (COVID-19) in Zhejiang, China: an observational cohort study. *The Lancet Infectious Diseases*. 2020.
- [12] D. Wang, B. Hu, C. Hu, F. Zhu, X. Liu and J. Zhang, Clinical characteristics of 138 hospitalized patients with 2019 novel coronavirus-infected pneumonia in Wuhan, China. *Jama*. 2020.
- [13] X. Mei, H. C. Lee and K. Y. Diao, Artificial intelligence-enabled rapid diagnosis of patients with COVID-19. *Nature medicine*, 2020:1-5.
- [14] Z. Y. Zu, M. D. Jiang, P. P. Xu, W. Chen, Q. Q. Ni, G. M. Lu, and L. J. Zhang, "Coronavirus disease 2019 (covid-19): A perspective from china," *Radiology*, p. 200490, 2020.
- [15] Q. Tang, B. Du, S. Yun, et al. "COVID-19 CT imaging intelligent diagnosis system", *Geomatics and Information Science of Wuhan University*, 1-8, 2020.
- [16] National health commission of china. (March, 2020). [Online]. Available: <http://www.chinadaily.com.cn/m/chinahealth/index.html>
- [17] F. Shan, Y. Gao, J. Wang, W. Shi, N. Shi, M. Han, Z. Xue, D. Shen, and Y. Shi, "Lung infection quantification of covid-19 in ct images with deep learning," *arXiv preprint arXiv:2003.04655*, 2020.
- [18] J. Chen, L. Wu, J. Zhang, L. Zhang, D. Gong, Y. Zhao, S. Hu, Y. Wang, X. Hu, B. Zheng et al., "Deep learning-based model for detecting 2019

novel coronavirus pneumonia on high-resolution computed tomography: a prospective study,” medRxiv, 2020.

[19] X. Ouyang, J. Huo, L. Xia, et al. “Dual-Sampling Attention Network for Diagnosis of COVID-19 from Community Acquired Pneumonia”, IEEE Transactions on Medical Imaging, 2020.