

Interpreting Intermediate Convolutional Layers of Generative CNNs Trained on Waveforms

Gašper Beguš¹ and Alan Zhou²

Abstract—This paper presents a technique to interpret and visualize intermediate layers in generative CNNs trained on raw speech data in an unsupervised manner. We argue that averaging over feature maps after ReLU activation in each transpose convolutional layer yields interpretable time-series data. This technique allows for acoustic analysis of intermediate layers that parallels the acoustic analysis of human speech data: we can extract F0, intensity, duration, formants, and other acoustic properties from intermediate layers in order to test where and how CNNs encode various types of information. We further combine this technique with linear interpolation of a model’s latent space to show a causal relationship between individual variables in the latent space and activations in a model’s intermediate convolutional layers. In particular, observing the causal effect between linear interpolation and the resulting changes in intermediate layers can reveal how individual latent variables get transformed into spikes in activation in intermediate layers. We train and probe internal representations of two models — a bare WaveGAN architecture and a ciwGAN extension which forces the Generator to output informative data and results in the emergence of linguistically meaningful representations. Interpretation and visualization is performed for three basic acoustic properties of speech: periodic vibration (corresponding to vowels), aperiodic noise vibration (corresponding to fricatives), and silence (corresponding to stops). The proposal also allows testing of higher-level morphophonological alternations such as reduplication (copying). In short, using the proposed technique, we can analyze how linguistically meaningful units in speech get encoded in each convolutional layer of a generative neural network.

Index Terms—Convolutional neural networks, GANs, interpretability, speech.

I. INTRODUCTION

HOW deep convolutional neural networks (CNNs) learn their internal representations is one of the central questions in machine learning. The vast majority of work on this topic is centered on the visual domain. Here, we propose a technique to visualize and interpret the intermediate layers of deep convolutional neural networks trained on

speech in an unsupervised manner. There are several advantages of interpreting intermediate layers in convolutional neural networks that are trained on speech over those trained on visual data.

First, humans process speech by discretizing the continuous physical properties of sound into discrete mental representations called *phonemes*. A long tradition of scientific study of phonetics and phonology [1], [2] has resulted in a relatively good understanding of how humans represent continuous properties in speech with such discrete units. A process reminiscent of human phonology emerges in unsupervised CNNs: they learn to represent the continuous space of spoken language with discretized representations [3], [4].

Second, speech data contains multiple local and non-local dependencies with different degrees of computational complexity that are well-documented and well-understood. For example, changing or adding a single sound to a word can result in a change in meaning. The English word *pit* [ˈpʰɪt] has a different meaning from *spit* [ˈspɪt]. Two processes occur here. First, the addition of the sound [s] changes the meaning of the word. Second, the stop consonant is produced with aspiration (puff of air marked by ^h) in the first word with no preceding [s], but without aspiration in the second word with preceding [s]. This contextually conditioned complementary distribution (between [p^h] and [p]) is computationally simple, but this is not true for all processes in human speech. For example, many natural languages feature an identity-based process called reduplication which requires phonological material to be copied from the output. A reduplicated form of the base [para] is [papara], where the first consonant and the first vowel [pa] in the base [para] are repeated (copied), which results in [papara]. Reduplication is on a higher complexity level than other phonological processes on the Chomsky hierarchy; it is more than context-free when most other phonological processes are regular [5], [6], [7], [8], [9], [10]. Specifically, it is a non-concatenative process that requires learners to copy phonological material from the base: [pa] is the prefix only for the bases starting with [pa] such as [para]. For other bases (such as [tara] or [mura]), the reduplication morphemes that fulfill exactly the same function are substantially different: [ta] and [mu], which makes learning more challenging than simple concatenative patterns. We can use these well-understood dependencies with different degrees of computational complexity to test what internal representations are learned from raw continuous data by CNNs and how they are learned. We are also able to test which acoustic properties get encoded at each convolutional layer.

Manuscript received 6 June 2021; revised 2 March 2022, 31 May 2022, 30 July 2022, and 4 September 2022; accepted 8 September 2022. Date of publication 26 September 2022; date of current version 17 October 2022. This work was supported by a grant to new faculty at UC Berkeley. The associate editor coordinating the review of this manuscript and approving it for publication was Prof. Hema A Murthy. (Corresponding author: Gašper Beguš.)

Gašper Beguš is with the Department of Linguistics, University of California, Berkeley, Berkeley, CA 94720-2650 USA (e-mail: begus@berkeley.edu).

Alan Zhou is with the Department of Cognitive Science, Johns Hopkins University, Baltimore, MD 21218 USA (e-mail: azhou23@jhu.edu).

This article has supplementary downloadable material available at <https://doi.org/10.1109/TASLP.2022.3209938>, provided by the authors.

Digital Object Identifier 10.1109/TASLP.2022.3209938

Finally, an advantage of interpreting CNNs trained on speech is that behavioral and acquisitional data is easy to obtain for speech. We can directly compare developmental stages in child language acquisition with stages of CNNs trained on speech [3], or use the same data to train human subjects and CNNs [11]. Outputs of the proposed technique can also be directly compared with human neuroimaging data, which contains time-series data of electrical activity in different parts of the brain recorded with various neuroimaging techniques.

II. PRIOR WORK

Visualizing convolutional layers is performed primarily on models trained on visual data [12], with considerably less work focused on the visualization of convolutional layers of the models trained on speech [13], [14], [15], [16]. For example, work on unsupervised models such as generative adversarial networks (GANs) has primarily been carried out on image data, and has been successful in identifying relationships in the latent space [17], as well as intermediate representations of various generated classes [18]. These approaches often leverage techniques specific to the visual domain, such as attribute prediction and image segmentation.

A. Interpreting Models Trained on Speech

Substantially less work exists on interpreting convolutional layers trained on speech, and the majority of this work operates on supervised models. Many proposals focus on interpreting and visualizing filters. The SincNet proposal [19] visualizes filters, and by imposing restrictions on filters, achieves better performance on an ASR task compared to unrestricted CNNs. Huang et al. [13] likewise focus on visualizing filters of convolutional layers from supervised models trained for ASR tasks. [14], [20], [21] make use of activation maps of convolutions on spectrogram inputs, using them to compute neuron activation profiles. The proposed techniques can highlight important regions for ASR tasks in CNNs, but focus more on individual neuron activations than intermediate representations. Millet and King [22] analyze activations in deep neural networks and correlate them with fMRI data.

Palaz et al. [23], [24], [25], Muckenhirn et al. [26], [27], and Golik et al. [28] also analyze learned filters at different convolutional layers. Muckenhirn et al. [27] analyze filters of CNN models for ASR tasks, but trained on raw waveforms. They also visualize estimated F0 contours based on filters in the first convolutional layer [27]. Analysis of the filters can, for example, reveal which frequency bands various filters target. This can in turn reveal what types of acoustic data are encoded at which convolutional layers. However, the proposed techniques yield less directly interpretable outputs. For example, this technique does not allow a direct analysis of waveforms from individual convolutional layer that directly correspond to some phonetic element in the final output layer.

Muckenhirn et al. [15] propose a gradient-based visualization technique for CNNs trained on raw waveforms (based on [29]) which yields relevance maps from the input signal that can be acoustically analyzed (a similar proposal that uses relevance

maps is in [16]). Their models are trained on supervised tasks: phone or speaker identification. Similar to our technique, their proposal enables analysis of acoustic properties (such as formant values and F0) in CNNs on a time-series data. Their method, however, does not focus on analyzing which acoustic representations are encoded at each layer, focusing instead on the most relevant parts of the input signal. Their supervised model also lacks the ability to test effects of individual latent variables on convolutional layers. Additionally, they focus on spectral analyses as they argue that “[v]isualization in the time domain does not bring much insights into what important characteristics are extracted by the network because the results are difficult to interpret, as we do not have any visual cues as in the case of images” [15, p. 2346]. This paper argues that averaged ReLU activations of feature maps combined with manipulation and linear interpolation of individual linguistically meaningful latent variables yield highly interpretable time-series data. Kourmura et al. [30] also examine a CNN trained on raw waveforms, taking inspiration from single neuron recordings to examine the activations of individual units. They examine the synchrony of individual activations to an input stimulus, and take averages across time rather than across layers. Harwath and Glass [31] take the L2 norm of activation maps in spectrograms and perform a PCA analysis of their outputs. Their work focuses on phoneme transition marking in one convolutional layer. To our knowledge, none of the proposals test the causal effect between latent variables and intermediate convolutional layers or probe representations in a generative model (which brings several advantages outlined below).

B. Our Approach

Here, we propose a different approach for interpreting intermediate convolutional layers from the existing proposals outlined above. By interpretability, we mean the ability to analyze how meaningful units in data are represented in intermediate convolutional layers. We propose a set of techniques that enables testing predictions such as what acoustic properties are encoded at what layer (and how) in a decoder (Generator) network. Rather than analyzing convolutional layers in a supervised model or analyzing filters, our proposal focuses on the activations of intermediate transpose convolutions of a Generator network that was trained on speech in a GAN framework. Whereas traditional convolutions are usually used to downsample preexisting data into lower-dimensional representations, transpose convolutions work in reverse, upsampling from a low-dimensional latent representation in order to generate new data. This framework causes some key differences in the structure of our intermediate layers, with the highest-level representations appearing in the deepest layers of the network. However, it also allows for exploration of causal relationships between representations of phonetic units in the latent space and encoding of those units in intermediate convolutional layers.

Our proposal brings several aspects that facilitate the interpretability of the activations of these intermediate convolutional layers. In [32], we propose that averaging over feature maps yields interpretable time series data, but focus exclusively on the

classifier network in which the causal relationship between the network’s classification output and intermediate layers cannot be established. [32] also focuses only on encoding of words and individual acoustic contrasts (and not phonological processes). Here, we follow the proposal in [32], but focus on the Generator network. We introduce several new approaches to the paradigm: (i) manipulating and interpolating individual latent variables well beyond training range (based on [3]) while visualizing intermediate layers, which enables (ii) observing the causal relationship between individual variables in the latent space and linguistically meaningful units in intermediate layers; (iii) testing which acoustic properties are encoded at which layer via correlations; and (iv) testing not only encoding of acoustic properties or words, but also of phonological processes and higher-level morphophonological processes such as reduplication. Like in [32], we train the networks in an unsupervised manner and interpret time-series data directly.¹ Below we outline why these aspects are important.

One of the main difficulties with interpreting convolutional layers in supervised ASR models is that it is not trivial to elicit or amplify activations given that the network takes raw data as inputs and outputs some classification, as we can only directly modify the raw data input. We propose an interpretable alternative: we build on a proposal in [3] that individual latent variables in a generative model can be manipulated to marginal levels well outside the training range, and that linear interpolation can reveal the causal relationship between individual variables and meaningful linguistic representations in the output and apply these two concepts to the visualization paradigm. The majority of proposals on CNN interpretability, known to the authors, do not manipulate individual latent variables. The generative and unsupervised aspect of the GAN framework (namely WaveGAN and ciwGAN) make this technique possible: we can manipulate the latent space and observe causal effects of individual meaningful variables on intermediate layers. In other words, we can observe how individual variables with some linguistic function get transformed throughout the convolutional layers while keeping the rest of the latent space z constant.

We interpret and visualize intermediate convolutional layers in a fully unsupervised manner — in the GAN framework. The majority of ASR/synthesis models using CNNs are supervised. The advantage of interpreting intermediate layers on unsupervised models is that the final reduced representation layer is not trained on a classification problem with a softmax function, but is connected to uniformly distributed random variables (or a combination of binary and uniformly distributed random variables) that get transformed to data in the output layer. This means that we can analyze self-organization of meaningful representations in intermediate convolutional layers and directly observe effects of individual variables in the latent space on intermediate representations.

The same technique can also be applied to other zero-resource speech models for unsupervised acoustic word embedding [33], [34] (such as autoencoders [35], [36], [37], [38], [39], [40], [41],

[42]), but GANs are chosen because they are unsupervised not only in the encoding task, but also in the generative task and as such even more suitable for generating novel outputs. Unlike in variational autoencoders (VAEs), the generator of a GAN never directly accesses the training data. In the GAN architecture, the generation aspect is fully unsupervised: the Generator is never fully connected to the input training data and thus needs to learn to generate data from noise without directly accessing the training data [4] (for differences in performance between VAEs and GANs in the visual domain, see [43]). Additionally, unsupervised ASR models increasingly include the GAN architecture [44].

Finally, the output of the proposed technique [32] is directly interpretable time-series data. Our proposal requires no further processing of the outputs (such as PCA): the proposed technique results in time-series data from each convolutional layer that directly correspond to the waveform output in the final layer. This means that we can analyze outputs at the same time domain across the convolutional layers. Understanding encoding of intermediate representations in unsupervised models that operate with waveforms will be particularly important as ASR models increasingly operate with raw waveforms [42], [45].

III. MODELS

A. Model Description

The interpretation and visualization of individual layers is performed on the Generator network in two models: WaveGAN [46] and ciwGAN [4]. WaveGAN is a single-dimensional transformation of the Deep Convolutional GAN (DCGAN) architecture [47] used for waveform data. Categorical InfoWaveGAN (CiwGAN) is an InfoGAN [48] modification of WaveGAN that includes an additional “Q-network” which forces the Generator to output informative data.

Both WaveGAN and ciwGAN contain a Generator and a Discriminator. The Generator takes 100 latent variables z uniformly distributed in the interval $(-1, 1)$ and transforms them into 16,384 data points constituting 1.024 s of audio file (sampled at 16 kHz) through five 1D convolutional layers. The dimensions of the five convolutions (four intermediate layers and the final output layer) are $512 \times 64 \times 1$, $256 \times 256 \times 1$, $128 \times 1024 \times 1$, and $64 \times 4096 \times 1$. The final layer (with tanh activation) has a dimension of $16384 \times 1 \times 1$. All layers except for the last one are trained with ReLU activation. The dimensions are summarized in Fig. 1.

The Discriminator network takes real and generated audio files (16,384 data points constituting audio file) and is trained using the Wasserstein loss formulation [49] with gradient penalty [50] (WGAN-GP). The Wasserstein distance between two distributions P_X and P_G is given by:

$$\mathcal{W}(P_X, P_G) = \sup_{\|f\|_L \leq 1} \mathbb{E}_{x \sim P_X}[f(x)] - \mathbb{E}_{x \sim P_G}[f(x)] \quad (1)$$

where x describes datapoints sampled from each distribution and $\|f\|_L \leq 1$ is the family of 1-Lipshitz functions [49]. In WGAN-GP, we have the Discriminator take the place of f in (1), and use gradient penalty during training to ensure that the

¹Other proposals also operate with raw waveforms and some also visualize feature maps (see above).

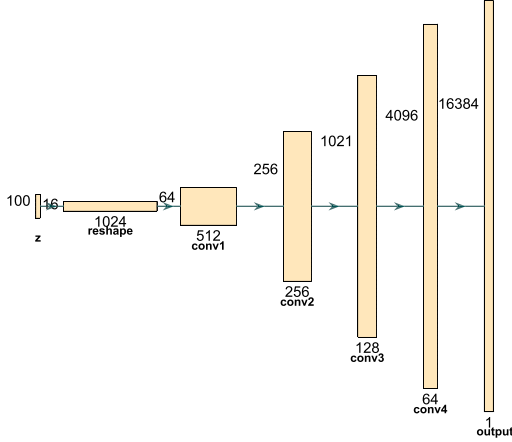


Fig. 1. The architecture of the Generator network with five one-dimensional convolutional layers as proposed in [46] and used for training in this paper. Filters are one-dimensional with the size of 25 [46].

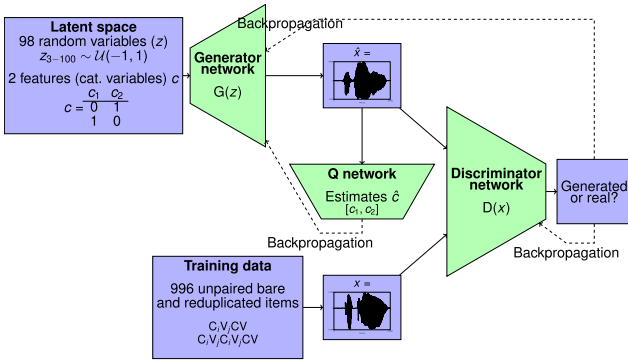


Fig. 2. The ciwGAN architecture as proposed in [4] used for interpreting intermediate layers in Section IV-C. Figure taken from [52].

Discriminator remains 1-Lipschitz. We thus have the Generator and Discriminator participate in the following zero-sum game:

$$\min_{\theta_G} \max_{\theta_D} (\mathbb{E}_{x \sim P_X} [D(x)] - \mathbb{E}_{z \sim P_z} [D(G(z))]) \quad (2)$$

where θ_G are the parameters of the Generator, θ_D the parameters of the Discriminator, G the Generator, D the discriminator, P_x the training distribution, and P_z the distribution of the latent space [46]. During training, the Generator and Discriminator take turns minimizing or maximizing the objective in (2), ideally reaching equilibrium when the approximated Wasserstein distance between the generated samples and real data is minimized.

The ciwGAN architecture [4] modifies the bare WaveGAN architecture by having the Generator take as input categorical code variables c in addition to the latent variables z and with the addition of a separate Q-network [4] to estimate these categorical codes c . The Q-network and the Generator are trained to maximize the Q-network's success rates (the architecture is summarized in Fig. 2). The Q-network is in structure identical to the Discriminator except in its final layer, which is trained on estimating the Generator's latent code c with a softmax function. In other words, the proposed architecture forces the Generator to output informative data. For example, when the ciwGAN

network is trained on words from TIMIT, the most informative way to encode unique information (e.g. a one-hot vector) into acoustic data is to associate each word with a unique latent code c . Lexical learning (associating acoustic lexical items with unique latent representation) thus emerges automatically from only the requirement that the Generator produce informative data in a completely unsupervised manner – lexical items are never labeled or paired during training. Training thus results in a Generator that learns to output unique words for each latent code [4].

The addition of the Q-network modifies the training objective with an additional term of the cross-entropy between the predicted latent code $Q(G(z, c))$ and the true latent code c . [4] adds this additional term to (2):

$$\min_{\theta_G, \theta_Q} \max_{\theta_D} (\mathbb{E}_{x \sim P_X} [D(x)] - \mathbb{E}_{z \sim P_z} [D(G(z))]) - \lambda \mathbb{E}_{c \sim P_c, z \sim P_z} [\log Q(G(z, c))] \quad (3)$$

where θ_Q are the parameters of the Q-network, P_c is the distribution of the latent codes, and λ is a tunable hyperparameter. The new cross-entropy term acts as a lower bound on the mutual information between the latent code and generated outputs, ensuring that the Generator uses informative latent codes in addition to generating realistic data.

B. Model 1: Bare WaveGAN Trained on a Simple Conditional Distribution

1) *Generator Trained on #TV and #sTV Sequences:* First, we analyze how the three basic acoustic properties of speech are encoded in CNNs: periodic vibration corresponding to vowels, aperiodic noise corresponding to fricatives (such as [s]), and silence corresponding to the closure part of stop consonants. For this purpose, we perform an analysis on the pretrained Generator network from [3] on sliced sequences of the structure #sTV and #TV from TIMIT [51] (where T = /p, t, k/ V = vowel, # = word edge). Altogether 5,463 data points from TIMIT were used for training: 4,930 sequences of the structure #TV (such as ['p^hæ]) and 533 of the structure #sTV (e.g. ['spæ]). We used simplified training materials to facilitate interpretation of intermediate layers, but the visualization technique proposed here is scalable to more complex training data too. The network in [3] was trained for 12,255 steps (approximately 716 epochs). At this point, the network not only learns to output speech-like sequences (#TV and #sTV) that resemble training data and are acoustically analyzable, but also learns the simple conditional distribution in which aspiration is shortened if [s] is present in the output (['p^hæ] vs. ['spæ]) [3].

2) *Finding Linguistically Meaningful Units:* In [3], a technique is proposed that identifies those latent variables from z that correspond to some meaningful linguistic representation in the output, such as presence of [s]. The technique includes training the network, generating data, and annotating them for presence of any acoustic or higher level phonological property (in our case, presence of frication noise of [s] or presence of reduplication). In [3], annotation is performed manually, but automated annotations can be employed as well. The data with

presence or absence of an acoustic property as the dependent variable and the 100 latent variables as predictors are then fit to regression models which identify those variables in the latent space z that most strongly correspond to the presence of the phonetic or phonological property in question. Based on results from the regression model, [3] argues that the Generator learns to represent the presence of [s] with a subset of latent variables z . Crucially, it is shown that manipulating the variables chosen with the regression technique results in an almost one-to-one mapping between *individual* latent variables and the presence of [s]. Several generative tests are performed to confirm the link between individual latent variables and the presence of some linguistically meaningful unit. [3] proposes that by manipulating individual variables to levels well outside of training range (i.e. well outside the interval $(-1, 1)$, which are called marginal levels henceforth) to values such as ± 15 , we can force [s] to surface (or not surface) in the output at near categorical levels [3], [4]. The value ± 15 was chosen because the output does not change substantially with values higher than ± 15 . The range of z -values that yield informative outputs during linear interpolation differ across models and likely depends on the number of training data points and diversity of the data (as differences in [11], [52] suggest).

Manipulating individual latent variables to marginal values well outside of the training range to create a high occurrence of a desired linguistic unit [3] is a crucial concept used in this paper. This technique reveals that the Generator learns to use the latent space as a discretized representation of linguistically meaningful units. For example, using regression techniques, 7 variables z_i out of the 100 in the latent space are identified in [3] that strongly correspond to presence of [s] in the output. These variables are learned during training and will vary with different training trajectories for the same model. The eleventh variable z_{11} is one such variable that strongly corresponds to presence of [s]. By setting z_{11} to -1 (within the training range), we get a modest increase of [s]-containing sequences in the output. By setting it to -15 , 87% of outputs contain an [s]; by setting it to -25 , there are 96% such outputs [3].

Beguš [3] shows that in the model trained on #TV and #sTV sequences, linearly interpolating z_{11} from marginal values results in a gradual reduction of frication noise in the output until [s] ceases from the output; the frication noise of [s] appears to be directly causally connected with z_{11} . To linearly interpolate a variable from marginal values, we generate a set of linearly spaced points along the interval between the marginal values and set the variable to each of those values. Fig. 9 (bottom right) shows how linearly interpolating z_{11} from 5 (corresponding to absence of [s] in the output) to -15 (corresponding to presence of [s] in the output) results in the gradual appearance and then increase of frication noise (corresponding to [s]) in the generated output. In [3], it is shown that direct correlations between single latent variables and the amplitude of frication noise of [s] in the output operate across generated samples and persists even when the amplitude is measured proportionally to the vocalic amplitude. In sum, there is a causal relationship between individual latent variables identified with the proposed technique [3] and linguistically meaningful properties of the output.

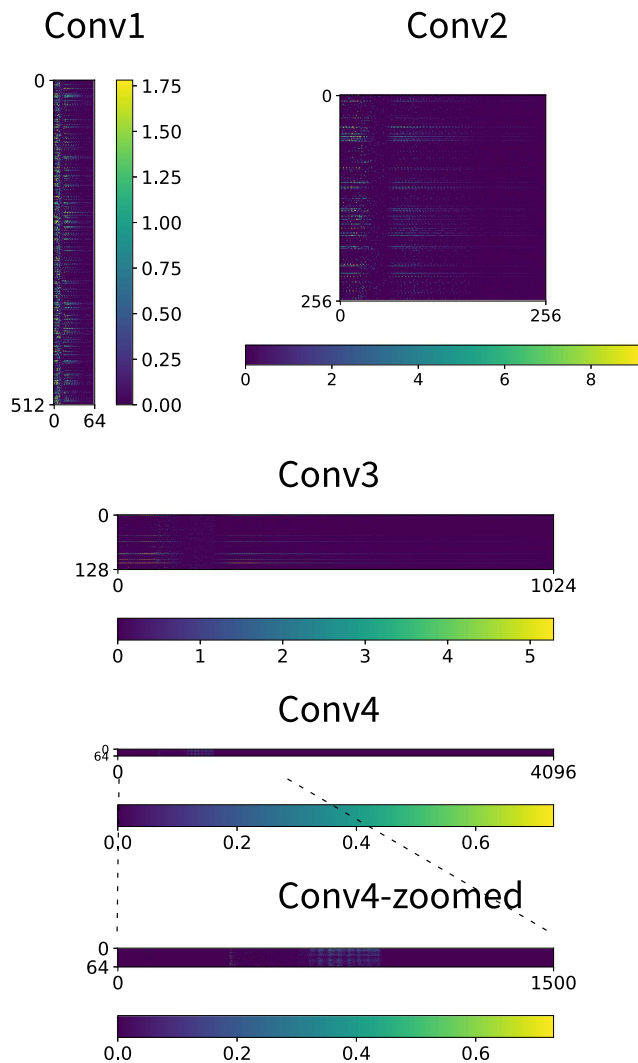


Fig. 3. Values of feature maps (concatenated on the y-axis) after ReLU activation in four convolutional layers for a uniformly distributed z -vector limited to the training interval $(-1, 1)$. The visualizations illustrate how activations in the previous layers result in a clearly analyzable periodic vocalic structure in the fourth convolutional layer (Conv4 on the zoomed-in graph) that in turn results in a periodic vocalic vibration in the output.

C. Model 2: Deeper WaveGAN Trained on LibriSpeech

In order to test how intermediate representations vary across model size and application and how the proposed technique scales up to larger models trained on larger corpora, we additionally train a deeper WaveGAN model [46]. For the purpose of this paper, we increase the depths of both the Generator and Discriminator networks from 4 intermediate convolutional layers to 9 intermediate layers. All other parts of the model architecture were unaltered. The exact dimensionalities of each layer are described in Supp. Materials Table I.

We train the model on 559,992 tokens of 508 words sliced from the LibriSpeech corpus [53] for 34,577 steps, after which mode collapse was observed. These words were chosen by discarding the 78 most common words that appeared disproportionately more frequently in LibriSpeech train-clean-360 (ranging

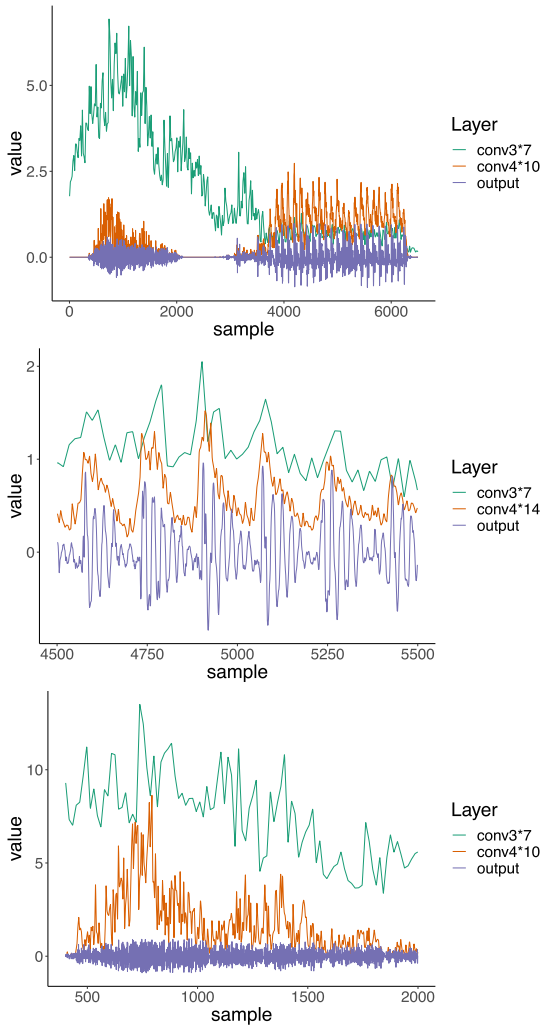


Fig. 4. All feature maps averaged after ReLU activation after the third convolutional layer (conv3; green), fourth convolutional layer (conv4; dark orange) and the generated output (output; purple). (top) A generated output when $z_{11} = -5$ featuring a period of frication [s], a period of silence (of a stop consonant), and a vocalic period. To overlay the two convolutional layers on top of the output, they are multiplied by 7 and 10, respectively. (middle) A period of vocalic periodic vibration with the same latent space values as above, but z_{11} set at -1 and conv3 and conv4 multiplied by 7 and 14, respectively, to overlay the convolutional layers on top of the output. (bottom) A period of frication (in [s]) with the same latent space values as above, but z_{11} set at -11 and conv3 and conv4 multiplied by 7 and 10, respectively, to overlay the convolutional layers on top of the output.

from 5,290 to 224,173 tokens per word), and arbitrarily choosing the next 508 most frequent words (571 to 5,113 tokens per word).

D. Model 3: CiwGAN Trained on an Identity-Based Pattern

The conditional allophonic distribution described in Section III-B is computationally among the simplest processes in human languages. To test whether the technique for interpretation of intermediate layers extends to computationally more complex processes in language, we apply the technique to a pre-trained ciwGAN model on an identity-based pattern (copying) called reduplication (in [52]).

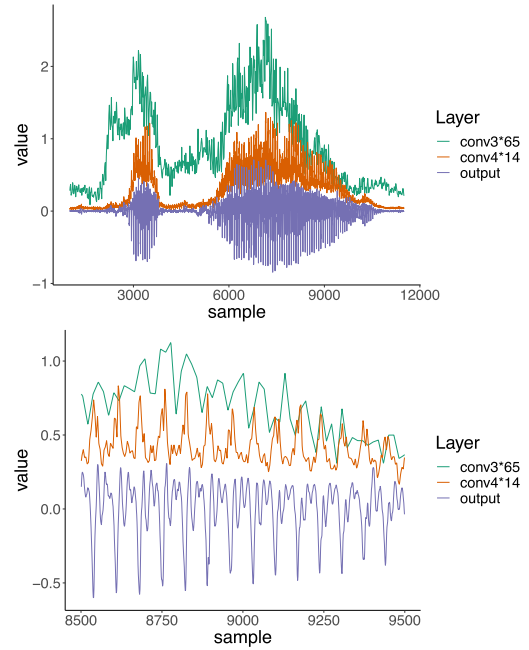


Fig. 5. All feature maps averaged after ReLU activation after the third convolutional layer (conv3; green), fourth convolutional layer (conv4; dark orange) and the generated output (output; purple). (top) A generated output when $c_2 = 1$. To overlay the two convolutional layers on top of the output, they are multiplied by 65 and 14, respectively. (bottom) Zoomed-in generated output when $c_2 = 1$.

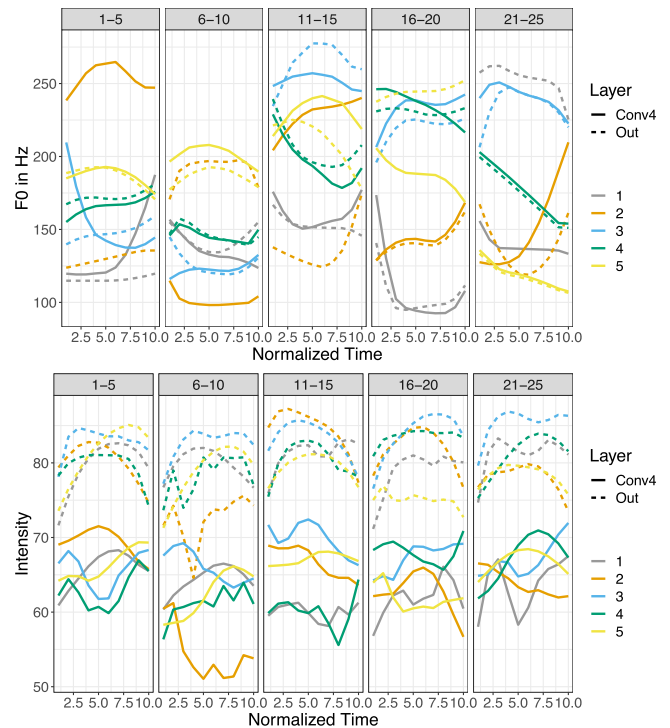


Fig. 6. (top) F0 values in normalized time (10 intervals) in 25 randomly generated outputs for the final output (Out) and fourth convolutional layer (Conv4), grouped in five bins (1-5) for presentational purposes. The values were extracted using the Praat software [55] with a script by Xu [54]. The window for F0 range was set to 60-300 Hz for the analysis. (bottom) Intensity values (in dB) in normalized time (10 intervals) in 25 randomly generated outputs for the final output (Out) and fourth convolutional layer (Conv4). The values were obtained as described for F0 (the minimum pitch for intensity is 100 Hz).

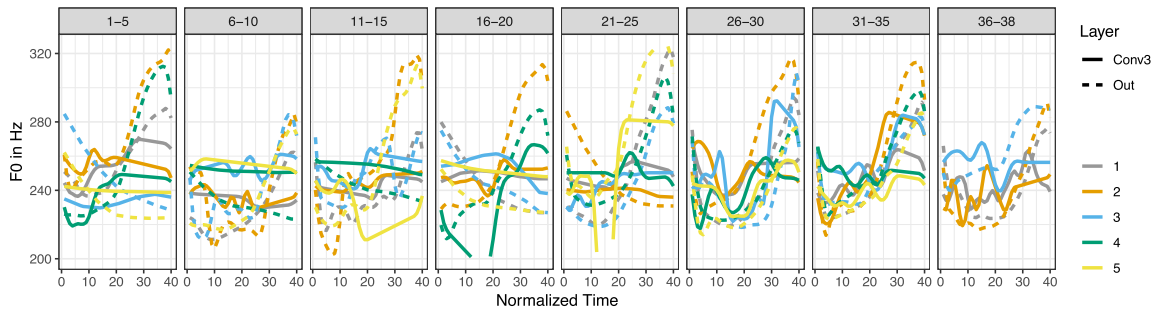


Fig. 7. F0 values in normalized time (40 intervals) in 30 randomly generated outputs (15 for each code; 38 vocalic periods total) for the final output (Out) and third convolutional layer (Conv3), grouped in five bins (1-5) for presentational purposes. The values were extracted using the Praat software [55] with a script by Xu [54]. The window for F0 range was set to 75–450 Hz for the analysis. Values below 250 Hz and above 325 Hz are excluded from the plot.

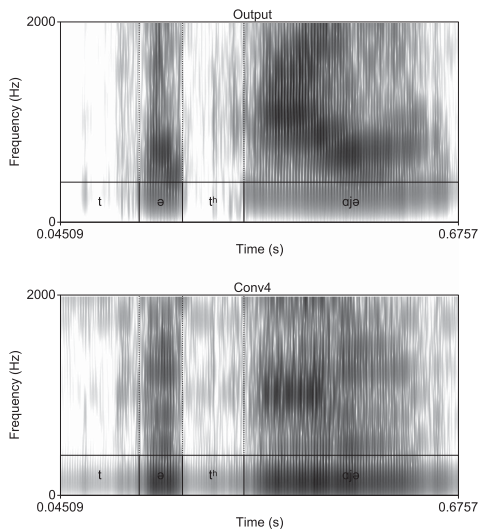


Fig. 8. Spectrograms (0–2000 Hz) of (top) the final generated output of a reduplicated form [ta'tʰajə] (from the ciwGAN architecture when $c_1 = 0$ and $c_2 = 1$; transcribed by the authors) and (bottom) of the same reduplicated form with $c_1 = 0$ and $c_2 = 1$, but from the fourth convolutional layer (averaged across the feature maps after ReLU activation).

The advantage of the ciwGAN architecture is that learning of linguistically meaningful units emerges from the requirement that the Generator outputs informative data. To test how learning of a highly complex process such as reduplication self-emerges in this architecture, [52] trains the ciwGAN network with one-hot latent code of length 2 on 996 bare and reduplicated items (e.g. [pʰali] and [pʰali]). The bare and reduplicated forms are never paired in the training data and are presented randomly. The model is trained for 15,920 steps (or approximately 5,114 epochs). The Generator learns to associate the latent code with reduplication: when latent code (one-hot vector with two levels) is set to marginal levels of 5 [5, 0], the Generator outputs 98% unreduced bare forms; when it is set to [0, 5], it outputs 87% reduplicated forms [52]. When the values are linearly interpolated, the Generator gradually turns a bare unreduced form into a reduplicated form (e.g. from [pʰiru] to [pʰali]) [52] in approximately 50% of outputs that undergo the change from bare to reduplicated (25% of total outputs). Fig. 10 (bottom right) shows how manipulating categorical latent variable c_2 results in the gradual appearance of a reduplicated

syllable in the output. The network also learns to extend the learned pattern to unobserved data and reduplicates forms with initial consonants that were withheld from training [52]. For example, by simultaneously forcing reduplication and [s] in the output (setting the latent variables to marginal levels beyond training range), the network outputs [sə'siji], although [sə'siji] and all [s]-containing reduplicated forms were withheld from training data (the network only sees unreduced words such as [siji]). These results [52] strongly suggest that the Generator learns to represent a linguistically meaningful and computationally highly complex process (reduplication or copying) with the latent codes in a fully unsupervised manner.

In [3], [4], [11], [52], we only analyze and interpret the endpoints of these models: the latent variables and the generated outputs. Here, we propose that intermediate convolutional layers can be interpreted using this technique as well.

IV. INTERPRETATION

We propose that learned representations in the intermediate layers can be evaluated by combining two techniques: (i) averaging across feature maps in each layer after ReLU activation (as in [32]; Sections IV-A through IV-C) and (ii) manipulating individual z variables to marginal values well outside the training range (as in [3]; Section IV-D).

Averaging across feature maps yields interpretable time-series data at each convolutional layer that shows how features are encoded in each layer [32]. In short, for each convolutional layer $C \in \{\text{Conv1}, \text{Conv2}, \text{Conv3}, \text{Conv4}\}$, we perform the averaging operation (from [32])

$$\frac{1}{\|C\|} \sum_{i=1}^{\|C\|} C_i \quad (4)$$

where C_i is the i th feature map of layer C and $\|C\|$ is the total number of feature maps in C . This yields a time series that summarizes the information encoded at each layer.

To evaluate the causal relationship between individual latent variables and the convolutional layers, the z variables can be linearly interpolated from marginal endpoints outside of the training range. The proposed technique reveals which features in the intermediate layers get activated when manipulating individual latent variables z and which linguistically meaningful variables (such as duration, F0, intensity, or formant structure)

get encoded at which layers. For a particular dimension of the latent noise z , we interpolate linearly between two extreme values and observe changes in the intermediate representations. For example, to test the 11th dimension of the latent space z_{11} as it changes from -5 to 5 , we freeze the rest of the latent space and vary z_{11} through the values $-5, -4.5, -3, \dots, 3, 4.5, 5$ (linear interpolation with a constant interval of 0.5), observing the Generator’s outputs and intermediate representations at every step.

This approach also allows us to follow how linear interpolation of individual latent variables z (such as z_{11}) that correspond to some meaningful linguistic unit (such as presence of [s] or reduplication) affect individual feature maps in each convolutional layer (Section IV-E).

A. Model 1: WaveGAN [46]

Fig. 3 plots values of each feature map (concatenated along the y-axis) for a z that is uniformly distributed on the training interval $(-1, 1)$ across all variables. The visualization illustrates the structure of the Generator. At the fourth convolutional layer, a clear periodic structure of the vocalic part is visible. The most common technique of visualizing CNNs — a simple concatenation of feature maps — does not provide the most interpretable results in speech beyond these basic observations.

Averaging across all feature maps as in (4) results in highly interpretable time-series data. Fig. 4 plots the third (Conv3) and fourth (Conv4) convolutional layers, averaged across all feature maps after ReLU activation along with the corresponding waveform output that can be transcribed as involving a fricative [s], a stop, and a vowel (#sTV). Overlaying the last two convolutional layers with the generated output reveals that the fourth convolutional layer includes information for all three major acoustic properties of the output: we observe a period of aperiodic vibration corresponding to the frication noise (in [s]), a period of silence corresponding to the closure portion of the consonant (T) and a clear periodic vibration corresponding to the vowel (V). The timing of these constituents in Conv4 aligns almost perfectly with the generated output.

The fourth layer (Conv4) carries both the fundamental frequency (F0) and formant structure information in the vocalic part of the input. Fig. 4 (middle) clearly shows that the averaged fourth convolutional layer after ReLU contains periodic vibration with the fundamental frequency that matches the output as well as higher-frequency vibration that corresponds to the formant structure in the output. Amplitude/intensity information also appears to be encoded in the fourth layer — Conv4 closely traces the actual output in the final layer.

To quantify these observations, we randomly generate 25 outputs from the bare WaveGAN model trained on #TV and #sTV sequences [3] and convert outputs from intermediate layers to waveforms ready for acoustic analysis.² We manually annotate the vocalic period in the final output and perform acoustic

analysis of the outputs in the third and fourth convolutional layers (Conv3 and Conv4).

1) *Duration*: We manually annotate periodic vibration in the fourth convolutional layer and compare vowel durations in the 25 generated outputs between the final output and the fourth convolutional layer. The vocalic durations are easily identifiable in Conv4 and nearly identical to the vocalic duration in the final output. Durations from the two layers fit to a linear model reveal a high degree of correlation ($\beta = 0.96, t = 30.31, p < 0.0001$) with adjusted $R^2 = 0.97$ (Supp. Materials Fig. 17). In the averaged Conv3-output, the difference between the periodic vibration characteristic of vowels and other acoustic properties, such as silence (characteristic of stops) or frication noise (characteristic of fricatives and aspiration), are not clearly visible (see Fig. 9 and Supp. Materials Fig. 20).

Based on these results, we can conclude that vocalic duration and periods of silence corresponding to stop closure are most strongly encoded in the fourth convolutional layer (Conv4) in the model trained on #TV and #sTV sequences.

2) *F0*: To test how the Generator encodes the fundamental frequency (F0), we extract F0 values from the manually annotated vocalic period in the 25 randomly generated outputs.³ The Conv4 outputs are noisy and limited to positive values, which is why extraction of F0 can be challenging. F0 values are extracted using Praat script by Xu [54] with the range of F0 set to 60–300 Hz for the analysis. Fig. 6 shows the 50 extracted values (25 for each layer). Several F0 trajectories are almost identical between the final layer and Conv4. A correlation test of concatenated values between the two layers (Conv4 and output) reveals a substantial correlation with $r = 0.53$ (Pearson’s product-moment correlation henceforth, marked with r). The correlation is calculated on all outputs together with no levels for individual outputs (here and in the following cases).

Fig. 4 suggests that F0 is likely also encoded in Conv3. The Conv3 layer shows peaks that correspond to vocalic periodic vibration. However, with the relatively weak signal, F0 contours are difficult to extract from the Conv3 of a model that is trained with relatively few steps. For further discussion on F0, see Section IV-C2.

3) *Intensity*: To test whether and how intensity is encoded in Conv4 (as observed in the qualitative analysis in Fig. 4), we extract intensity values from annotated vocalic periods (using the script by Xu [54] in Praat [55] with 100 Hz minimum pitch and annotated in the final output layer). Fig. 6 illustrates that the intensity values of Conv4 are lower compared to the final output, but there is a substantial correlation between concatenated values of intensity in the two layers: $r = 0.62$. Lower absolute values of the intensity levels are expected as the Conv4 layer only includes positive values and there is no reason for the network to match intensity values in absolute terms across the layers.

We also correlate intensity levels between the third convolutional layer (Conv3) and the final output. Because vocalic period is not clearly encoded in Conv3, we use annotations of the

²As the intermediate layers are all positive, we clip all values greater than 1 to be equal to 1 in the waveform outputs. We then treat the signal as a float32 signal and convert it to a .wav file. We also upsample the intermediate layers to 16 kHz sampling with linear interpolation.

³For the purpose of analyzing F0 and intensity, we use annotations of the vocalic period from the final output (Out) also for the analysis of F0 and intensity in the third and fourth convolutional layers (Conv3 and Conv4).

vocalic period from the final output. There is a modest correlation in intensity values between Conv3 and the final output: $r = 0.39$. Fig. 9 also suggests that intensity (or amplitude envelope) is encoded in Conv4, Conv3, and perhaps even in Conv2 when individual latent variables are manipulated to marginal values.

B. Model 2: Deeper WaveGAN [46]

To test how the proposed technique scales up to larger models and how linguistically meaningful properties are encoded across the convolutional layers in deeper models, we focus on F0 encoding in the Deeper WaveGAN model trained on LibriSpeech.

To test encoding of F0, we manually annotate 25 randomly generated outputs for periodic vocalic vibration in the final layer. F0 values in both the final layer as well as in higher convolutional layers are extracted based on the annotations from the final layer. Ten F0 values are measured for each instance of vocalic vibration. We extract F0 values from Conv6, Conv7, Conv8, and Conv9 and compare them to extracted values from the final layer (Out).

Pearson's product-moment correlation reveals a high degree of correlation between Conv9 and output: $r = 0.85$. This value is even higher than the correlation in the 5-layer WaveGAN, despite it being trained on substantially more data points. With each subsequent layer, the correlation gets smaller ($r = 0.73$ for Conv8, $r = 0.25$ for Conv7, and $r = 0.15$ for Conv6). Supp. Materials Fig. 18 illustrates a high correlation in F0 between Conv9 and output and a substantially lower correlation between Conv6 and output (plots for Conv7 and Conv 8 are in Fig. 19 in Supp. Materials). We observe a similar trend in the deeper model as in the original WaveGAN: there is a steep drop in correlation estimates in F0 encoding between Conv9 and Conv8 vs. Conv7 and Conv6. If we consider the layers in the 10-layer model as a doubled 5-layer model, Conv9 and Conv8 together correspond to Conv4, while Conv7 and Conv6 correspond to Conv3. In the 5-layer model, there was a substantial drop in correlation estimates between Conv4 and Conv3, similarly to what we observe in the 10-layer model.

C. Model 3: CiwGAN [4]

Visualization of intermediate layers in Fig. 10 suggests that lower-frequency properties such as acoustic envelope are encoded in earlier convolutional layers and that properties with frequencies higher than acoustic envelope (such as F0 or formant structure) get added on top of the envelope outline in the later layers. To quantify this observation, we perform correlation analysis on the ciwGAN model. The ciwGAN model captures longer time frames of periodic vibration with more variable acoustic envelopes compared to the WaveGAN model because the training data involve words longer than a single syllable. The ciwGAN model also contains a more complex linguistic process — reduplication (see Section I for a discussion on complexity). We analyze the encoding of acoustic envelope (intensity) and F0 through all convolutional layers (Conv1-4 and the final output). We show that intensity is encoded in both the earlier layers and well into the deepest layers with high correlation estimates,

whereas F0 gradually appears in later layers. Formant structure is encoded only in the final layer (it cannot even be tested in earlier layers).

We generate 30 random outputs, 15 each for the two values of the code variables ($[0, 1]$ and $[1, 0]$). We extract F0 and intensity values over the entire periodic vibration of an output (all voiced sounds) based on authors' manual annotations. For example, in an output transcribed by the authors as $['bali]$, the F0 and intensity values are extracted from all sounds, because they are all voiced.⁴

1) *Intensity*: Intensity appears to be strongly encoded at all convolutional layers. Contrary to the analysis in Section IV-A3, intensity values in this model span not only a single vowel but often multiple vowels and voiced consonants (both sonorants and stops). Correlation between the concatenated final output values and averaged Conv4 values are high: $r = 0.82$ (Fig. 21 in Supp. Materials). The correlation between the output and averaged values from the third, second, and first convolutional layers is slightly smaller, but nevertheless relatively high: $r = 0.72$ for Conv3, $r = 0.63$ for Conv2, and $r = 0.44$ for Conv1.

2) *F0*: Outputs from the ciwGAN model suggest that F0 is already encoded in the fourth convolutional layer, similarly to what is suggested in the bare WaveGAN model. The extracted F0 values often suffer from doubling and halving errors, but there is still a correlation between F0 in the output and in the fourth convolutional layer (Conv4): $r = 0.55$. The ciwGAN model also suggests that the F0 is at least partly encoded already in the third convolutional layer (Conv3), but not earlier than that. Fig. 7 plots all extracted F0 values from the final output and the third convolutional layer. There is a moderate correlation in F0 between the averaged Conv3 layer and the final output ($r = 0.40$). In earlier layers, correlation is very low: $r = 0.10$ for Conv 2 and $r = -0.02$ for Conv1 (despite the window for F0 being lowered to 5-150 Hz).

Each convolutional layer is limited in what acoustic information it can encode directly as raw time series data by the Nyquist frequency: the layer's dimensions need to be at least twice the frequency of the acoustic property that needs to be encoded. For example, convolutions higher than the third layer (Conv3) cannot encode F0 in a non-abstract way: with a dimension of only 256, its Nyquist frequency is only 128 Hz. It is of course possible that different F0 values and trajectories are encoded in an abstract reduced representation in higher convolutions as well as in the latent space, but they cannot be encoded directly with frequency encoding. In principle, acoustic properties could be encoded with a quotient of frequency. For example, F0 could be encoded with halved values ($F0/2$) to satisfy the Nyquist frequency. However, based on the experiment presented here, this does not appear to happen as correlations (invariant to quotient frequencies) are very low in earlier layers.

3) *Formants*: To test how formants are encoded in the Generator network, we extract the first and second formant values

⁴For reduplicated outputs interrupted by a stop, we extract the values separately for each periodic vibration, which totals in 38 analyzed periods from 30 outputs.

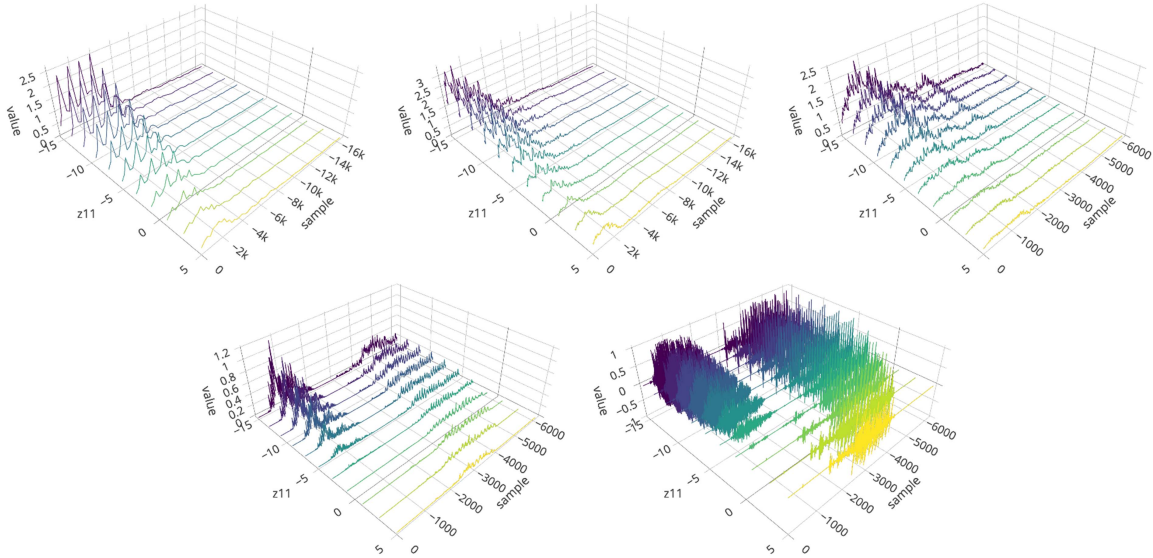


Fig. 9. Averaged values across feature maps after ReLU activation in the first (top left), second (top middle), third (top right), fourth (bottom left) convolutional layer, and the final waveform output (bottom right). For each convolutional layer, the graph represents 11 averaged values after ReLU activation where z_{11} is linearly interpolated from -15 to 5 (with interval of 2) while all other 99 latent z variables are held constant and limited to the training interval (-1,1) with uniform distribution. All outputs except in the final layer are upsampled with linear interpolation to total 16,384 samples (y-axis) to match the audio waveform output. Representation of the third, fourth, and final layer were cut off at 6100th sample because higher samples featured mostly silence. The figures illustrate how linearly interpolating z_{11} from 5 to -15 results in appearance of sound [s] in the final output and how representation of [s] is encoded across the layers.

F1 and F2 (using script FormantPro by Xu and Gao [56] in Praat [55]).

The relationship in formant values between the output and Conv4 is complex. First, formants are relatively challenging to estimate, even in clean human acoustic data, let alone in generated data or in intermediate convolutional layers. Second, while the fourth convolutional layer clearly features formant structure, the relationship between Conv4 and the final output is not straightforward. Fig. 8 illustrates this relationship. The spectrogram of the output [tə^hɑjə] in Conv4 reveals a clear formant structure (Fig. 8) but the actual formant values only partially overlap with the final output layer.

To quantify this observation, we analyze formant values of the 38 periods with vocalic vibrations in normalized time and test the correlation between the fourth convolutional layer and the final output. The strongest correlation between the final output and the fourth layer appears to be in values of the second formant (F2): $r = 0.40$ (Fig. 22 in Supp. Materials). In some outputs in the fourth convolutional layer (Conv4), F2 values match the final output layer both in the absolute values and in trajectories, but there also exist substantial deviations between the two layers. F2 is in a few cases already above the Nyquist frequency for Conv4 (2,048 Hz). F1, on the other hand, does not appear to be faithfully encoded in Conv4: a correlation test between the output and Conv4 suggest a negative correlation for F1 ($r = -0.38$).

D. Interpolation

Results of the quantitative acoustic analysis of intermediate convolutional layers in Section IV-A through IV-C reveal how and where the Generator encodes different acoustic properties. To interpret how linguistically meaningful representations in the

latent space translate into spikes in activation in the intermediate layers, we use the proposal in Beguš [3] and linearly interpolate individual latent variables to marginal levels well outside the training range.

We linearly interpolate values of z_{11} in the bare WaveGAN model and values of the latent code c_1 and c_2 in the ciwGAN model. We generate outputs by linearly interpolating z_{11} in the WaveGAN model from -15 to 5 (with interval of 2), and observe the resulting generated output for each value of z_{11} . This results in 11 outputs per each convolutional layer (55 total). All other 99 latent variables remain constant across all outputs. The effects of this interpolation are similar across all sets. One such set of the five convolutional layers from the bare WaveGAN on TIMIT with interpolated values in the latent space is plotted in Fig. 9. The final output layer illustrates how an output without [s] gradually transforms into an output with [s] as z_{11} is linearly interpolated towards the negative values which represent the presence of [s].

The advantage of the technique proposed in [3] is that we can observe the causal effect of individual latent variables on the output at each convolutional layer by analyzing averaged ReLU activations. Fig. 9 illustrates how the linear interpolation of z_{11} results in spikes of four values in the first convolutional layer. These four spikes increase as the values of z_{11} decrease, to the exclusion of other variables at this layer. It is likely the case that at the first layer (Conv1), the discretized abstract representation of [s] in the latent space transforms into spikes of a subset of values. At this point, the transformation is still highly abstract. In the second convolutional layer (Conv2), the spikes transform into a more detailed representation of what corresponds to friction noise of [s] in the final output layer. The differentiation between the friction noise and periodic

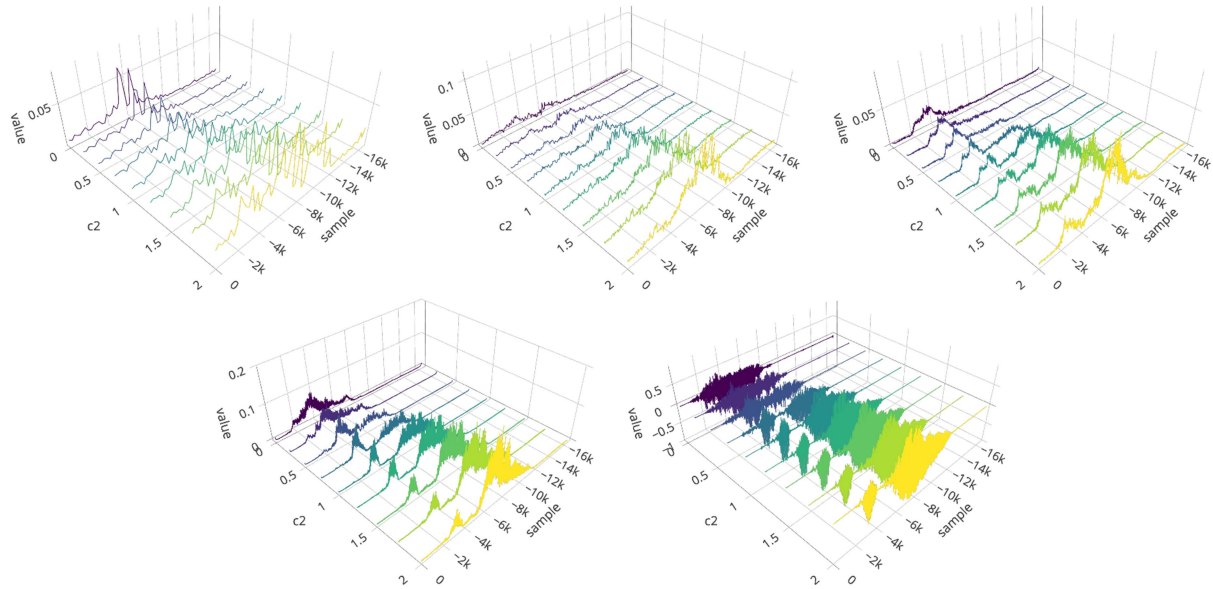


Fig. 10. Averaged values across feature maps after ReLU activation in the first (top left), second (top middle), third (top right), fourth (bottom left) convolutional layer, and the final waveform output (bottom right). At the values $[0, 0]$ the final output layer can be transcribed as $[\text{'d}ə\text{d}ə\text{j}]$. At the values of the latent code $[0.625, 0]$, the output can be transcribed as $[\text{d}ə\text{'d}ə\text{j}]$; at the value $[1, 0]$ $[\text{t}ə\text{'t}^{\text{h}}ə\text{j}]$. For each convolutional layer, the graph represents 9 averaged values after ReLU activation where c_2 is linearly interpolated from 0 to 2 (with interval of 0.25) while c_1 is set to 0 and all other 98 latent z variables are held constant and limited to the training interval $(-1, 1)$ with uniform distribution. All outputs except in the final layer are upsampled with linear interpolation to total 16,384 samples (y-axis) to match the audio waveform output. Representation of the third, fourth, and final layer were cut off at 6100th sample because higher samples featured mostly silence. The figures illustrate how linearly interpolating c_2 from 0 to 2 results in appearance of reduplication and how reduplication is encoded across the layers.

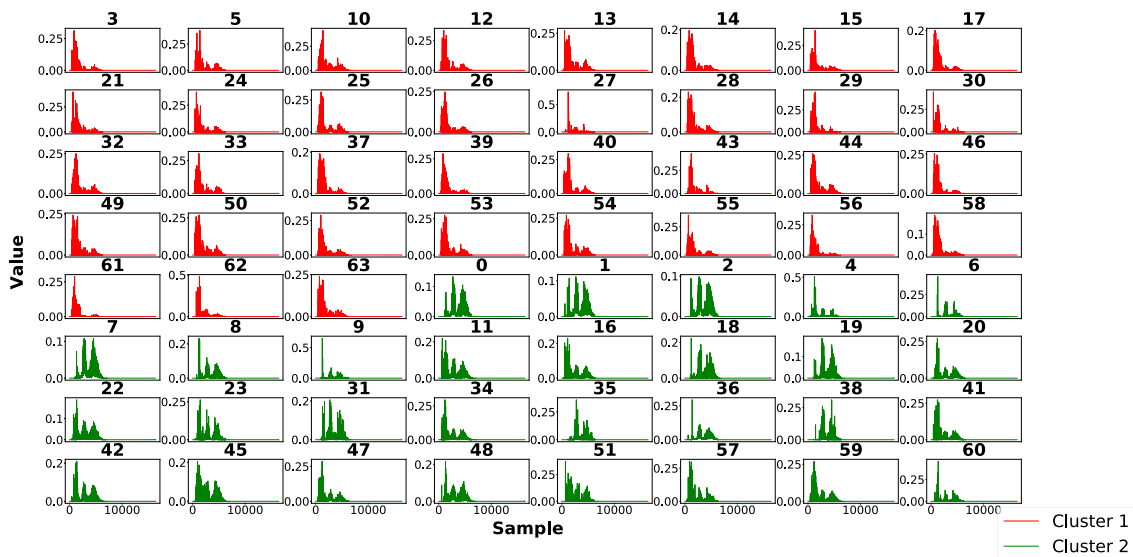


Fig. 11. Individual feature maps averaged over 500 instances of #sTV and 500 instances of #TV, clustered using spectral clustering. All feature maps exhibit an initial spike corresponding to the presence of a [s]-frication. However, the first cluster (red) has comparatively low activation after the initial spike, while the second cluster (green) exhibits subsequent spikes that correspond to the rest of the sequence. These clusters were found with spectral clustering described in Section IV-E1.

vocalic vibration becomes clearer in the third convolutional layer (Conv3). The increasing amplitude of the period corresponding to frication noise (compared to the vocalic period) as the values of z_{11} approach -15 suggests that the four spikes in values from Conv1 transform into precursors of frication noise and that linear interpolation of the individual latent variable z_{11} representing [s] amplifies primarily the frication period throughout the four

layers and the final output. There is thus a causal relationship between z_{11} and precursors of the frication noise at each convolutional layer. Visualization of the linear interpolations in the fourth layer (Conv4) also suggests that this layer encodes all major acoustic properties: frication noise, period of silence, and vocalic vibration as well as F0 and intensity of the periodic vocalic vibration.

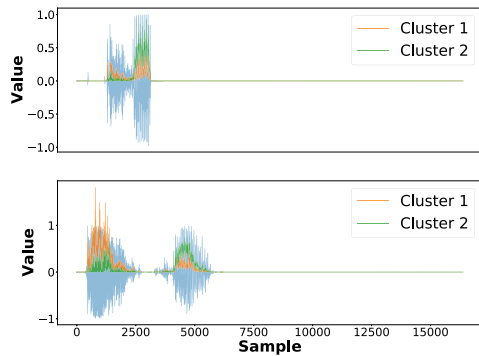


Fig. 12. The same clusters from Fig. 11 averaged for a particular example of #TV (top, $z_{11} = 5$) and #sTV (bottom, $z_{11} = -15$), and plotted against the final output. Cluster 1 is much less activated than Cluster 2 in the #TV output, but becomes highly activated in exactly the region corresponding to [s] in the #sTV output.

To interpret linear latent code interpolation in the ciwGAN model trained on reduplication, we create a similar set: we manipulate the latent code from $[0, 0]$ to $[0, 2]$ with interval of $[0, 0.25]$, thus creating 9 outputs per convolutional layer (45 total). One such set is chosen for visualization, but the effects of linear interpolation are similar across all sets. All other 98 latent variables z remain constant across all outputs.

Interpretation of linearly interpolated intermediate layers in the ciwGAN model is more complex because the phonological process the model is trained on — reduplication (or copying) — is computationally highly complex (see Section I). The first convolutional layer shows less discretized representations than in the #sTV model. Interpolation from $[0, 0]$ to $[0, 2]$ (corresponding to presence of reduplication) seems to activate a few spikes for the main vowel and reduplicant vowel, but less categorically so than in the #sTV model. Averaged ReLU activations with linearly interpolated codes in Fig. 10 suggest that the latent code representing a computationally complex process results in the formation of two vocalic periods, interrupted by a consonantal element that appears identical on both sides of the reduplicated vowel (the copying principle). Visualizations also show that the period of silence (or reduced amplitude) corresponding to stop closure is encoded well into the third convolutional layer. Intensity (or acoustic envelope) appears to be encoded through all the convolutional layers.

E. Individual Feature Maps and Interpolation

1) *Individual Feature Maps*: In addition to the averaged feature maps at each layer, we also attempt to identify how linguistically meaningful properties are encoded separately in individual feature maps. Individual feature maps tend to be highly sporadic, with the same feature map possibly encoding different properties for distinct outputs even when the outputs have similar properties. However, there do exist some broad patterns across different generated outputs.

To identify these patterns for specific properties (such as presence of [s]), we generate a large number of outputs ($N = 1000$). Half of the outputs have been manipulated (using the

latent space) so that the feature of interest ([s]) is present, and the other half have been manipulated so that the feature is absent. We perform this manipulation because the distribution of the Generator outputs without manipulation may have an uneven balance of the property we are interested in. All of the activations for these outputs are then averaged across each individual feature map. This creates a broad “activation profile” for each filter across a variety of outputs. Clustering is then performed on these activation profiles to identify broad patterns of activation.

Specifically, we perform this analysis on the fourth convolutional layer of the WaveGAN model (Section III-B), generating 1000 total outputs, 500 of which have z_{11} set to -15, and 500 of which have z_{11} set to 15. After averaging across feature maps, we perform spectral clustering, using the radius basis function kernel with a kernel coefficient of 1×10^{-10} to construct the affinity matrix, and clustering using k-means where $k = 2$. The results are shown in Fig. 11.

We see two broad distributions of activations: one in which there is a spike of activation near the beginning of the waveform and relatively low activation afterwards, and another in which we see additional spikes afterwards. We interpret the large single spike in the former category to correspond with the presence of a [s] frication, and determine these feature maps to encode almost exclusively for the presence of [s]. The latter category we take to also encode for [s], but which in addition is responsible for the rest of the #sTV sequence. Indeed, when we average these clusters separately for particular examples of generated outputs with and without the [s] frication in Fig. 11, we see that the first cluster is activated weakly compared to the second in the absence of [s] ($z_{11} = 5$; Fig. 11 top). In the presence of [s] ($z_{11} = -15$; Fig. 11 bottom), we see activations from both clusters in the area corresponding to the [s]-frication, but weaker activations from the first cluster in the rest of the #sTV sequence.

2) *Interpolation*: We can also analyze and interpret individual feature maps by linearly interpolating individual latent variables with linguistically meaningful representations. Fig. 13 illustrates four “raw” feature maps with linearly interpolated values of z_{11} (in blue) and their corresponding final output layer (in gray). The four feature maps were chosen as those in which the distance between the feature map when z_{11} is -15 and each corresponding feature map when z_{11} is interpolated is smallest (according to cosine distance).

Individual feature maps show several parallels to the averaged values discussed in Section IV-D. By manipulating individual variables with linguistically meaningful representations (such as z_{11}), we can follow the causal effects of those variables on individual feature maps. Fig. 13 illustrates that individual feature maps transform marginal z_{11} values into spikes in few values in Conv1. At Conv3, the z_{11} transforms into a less abstract representation of frication noise that substantially increases in amplitude as the values of z_{11} approach -15. At Conv4, we see differentiation into periods of frication noise, silence, and periodic vocalic vibration. Again, linear interpolation results in increased amplitude of the frication noise.

Visualization of individual feature maps combined with linear interpolation of individual linguistically meaningful latent variables thus allows us to explore whether individual feature maps

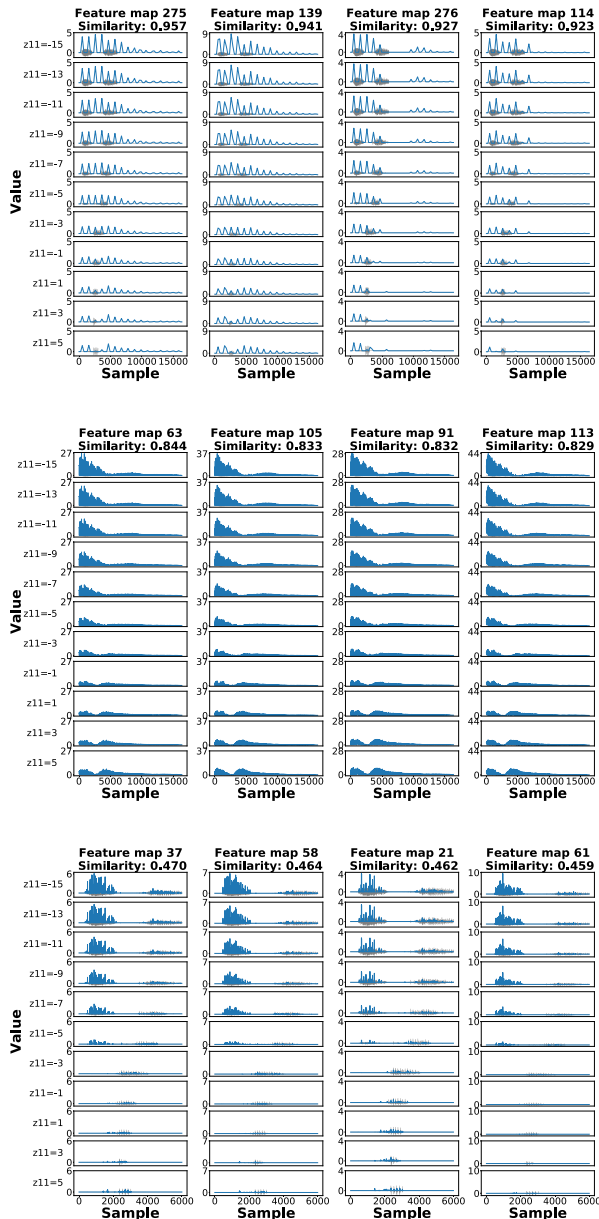


Fig. 13. Sets of individual feature maps after ReLU with minimal changes as determined by cosine distance from the values when $z_{11} = -15$. The feature maps are plotted at three convolutional layers: Conv1 (top), Conv3 (middle), Conv4 (bottom). Values of z_{11} are linearly interpolated from -15 to 5 with interval of 2 for each convolutional layer and feature map (while other 99 z variables are kept constant).

separately encode different phonetic properties (e.g. frication noise, silence, or periodic vocalic vibration).

Exploration of individual feature maps (Figs. 11 and 13) revealed no specific divergences in how linguistically meaningful units are encoded between individual maps and the summation of all values across the time domain, except that individual feature maps are highly sporadic if analyzed separately. This suggests that the summation technique proposed in this paper is representative of the properties that each layer encodes as a whole, and is useful for analyzing which acoustic properties are broadly encoded at which layers. Further work is needed

to test whether individual maps encode additional information in higher layers and whether linguistically meaningful units are encoded not as time-series but as absolute values (for evidence of the latter, see [32]).

V. DISCUSSION

This paper proposes a set of techniques to interpret and visualize outputs at intermediate transpose convolutional layers in CNN decoders (the Generator) trained on waveforms in an unsupervised manner. We argue that averaging across feature map values after ReLU activations yields interpretable time series data that summarizes encodings of phonetic features at each convolutional layer in the Generator network. This allows us to use standard acoustic phonetic measurements to test what properties of speech are encoded at what layer.

A. Acoustic Properties Across Layers

Acoustic analyses suggest that many acoustic properties are encoded in the final convolutional layer before output (Conv4 or Conv9 in the deeper model). This layer features a clear period of frication noise (aperiodic vibration), a period of silence (corresponding to closure in voiceless stops) and a period of periodic vibration with some formant structure. Duration of the vocalic period is also faithfully encoded in the final layer: periodic vibration between Conv4 and final output align almost perfectly. Visualizations in Fig. 4 suggest that timing of other major acoustic properties (frication noise and silence) is also highly aligned between Conv4 and final output. Acoustic analysis of the final convolutional layer also suggests that F0 and intensity values (or acoustic envelope) are faithfully encoded in this layer.

Differences in the acoustic properties between the two models — the bare WaveGAN and ciwGAN — suggest that the degree to which individual acoustic properties are encoded at various intermediate layers can differ somewhat across the models. The two models probed here differ in the number of training steps (12,255 in WaveGAN vs. 15,920 in ciwGAN), the amount of training data (5,463 total in the WaveGAN model vs. 996 total in the ciwGAN model), and consequently in the number of epochs (717 vs. 5,114). The structure of the Generator is identical across the models, except that in the ciwGAN architecture, the generator takes the latent code c in addition to the latent variables z as its input. The ciwGAN model trained on a computationally more complex process with substantially more epochs appears to encode formant structure in the fourth convolutional layer (Conv4) more faithfully than the bare WaveGAN model trained on #sTV. While the relationship between the formant structure in Conv4 and the actual output is complex, the fourth convolutional layer does feature a clear formant structure which is at least partly correlated with the final output (in F2 values).

The third convolutional layer in the 5-layer model is substantially more limited in what it can encode: with 1024 data points, its Nyquist frequency is 512 Hz. Formant structure is expectedly limited, but F0 and especially intensity data are encoded in this layer.

Analysis of earlier layers (Conv1 and Conv2) and visualizations in Fig. 10 suggest that intensity (acoustic envelope) is attested well into the second and even first convolutional layer in the ciwGAN model. It appears that the acoustic envelope gets encoded in the earliest layers and that acoustic information with higher frequencies (such as F0 and formant structure) is gradually built on top of the envelope in later layers.

B. A Causal Relationship Between the Latent Space and Intermediate Layers

Combining the proposed interpretation technique with manipulation and linear interpolation of individual latent variables illustrates how individual variables in the latent space affect the activations at individual convolutional layers. Generating data with interpolated individual latent variables allows us to identify which activations in intermediate convolutional layers increase or decrease most substantially with interpolation, thus identifying a causal relationship between individual latent variables and activations in intermediate layers.

We can also probe individual feature maps by manipulating and linearly interpolating individual latent variables. The effects of linear interpolation on individual feature maps is similar to its effect on the averaged values (Section IV-E).

Analysis of individual feature maps by manipulation of the latent space also suggests that different acoustic features (such as aperiodic friction noise or periodic vocalic vibration) can be encoded in separate feature maps. Clustering in Section IV-E1 suggests that some feature maps activate the friction part more strongly when the latent variable corresponding to [s] is manipulated to marginal levels, while in others the vocalic period is activated more strongly.

C. Applications, Limitations, and Future Directions

With the proposed technique, we can analyze which acoustic properties are encoded in which intermediate convolutional layers. ASR and speech synthesis systems overwhelmingly include convolutional neural networks, at least in initial layers. Recently, there has been a shift towards using ASR/synthesis systems directly from raw waveforms [45]. Additionally, ASR increasingly involves unsupervised models, and recently a GAN-based approach has been proposed for unsupervised ASR with no labeled data required [44]. Our proposal allows visualization and interpretation of transpose convolutional layers in a GAN-based unsupervised model that operates from raw waveforms. While most CNNs in ASR systems involve windows shorter than 1 s (as in our case), we choose to apply the proposed technique to longer windows in order to test the encoding of not only acoustic properties, but also of higher-level phonological processes (such as reduplication). Understanding how phonological processes are encoded will be increasingly important as unsupervised speech technology systems become available in languages with substantially more (and more complex) phonological processes than English. Finally, our proposal allows exploration of the causal relationship between individual latent variables and intermediate convolutional layers by manipulating and linearly interpolating latent variables to values outside of the training

range. Exploring causal relationships in deep learning models is a growing area in machine learning research.

We apply the proposed technique to two GAN models trained on limited and curated data, because the latent space can be highly interpretable in GANs [3], [4], [52]. We also limit our discussion on the Generator (decoder) network (for interpretation of the classifier network, see [32]). These GAN-based models, while capable of both speech synthesis and speech classification [4], are not usually employed in most current ASR/synthesis applications. The results from the deeper model (Section III-C) trained on LibriSpeech, however, suggest that the proposed technique can be scaled to larger models and that similar (but more distributed) encoding emerges in intermediate layers of deeper models as well. Future directions should involve applying the proposed technique to ASR and TTS models that involve CNN layers (e.g. wav2vec 2.0 [42]). Similar approaches can also be utilized on any CNN-based decoder (such as [57]) as well as on VAEs, which are often used in unsupervised speech technologies [35], [36], [37], [58]. Like GANs, VAEs involve upsampling from a latent space (whether distributed or as a codebook) with a decoder model similar to a Generator. The combination of intermediate convolutional layer visualization and interpolation of individual variables can provide insights into learning in VAEs as well.

In this paper, we also limit our discussion on the most salient acoustic properties (intensity, F0, and formant structure). Other properties such as acoustic correlates of gender, dialects, race, or socioeconomic background can be probed with the same techniques as well.

The interpretation and visualization technique can serve also as a diagnostic for improving the performance of CNNs trained on speech. The interpretation suggest that several acoustic properties relevant to speech perception (especially the formant structure of vowels) is encoded only in the final layer (of the 5-layer models), primarily because the Nyquist frequency does not allow properties with higher frequencies to be directly encoded as a time-series property (i.e. with frequency encoding) earlier in the structure of the Generator network. This suggests that introducing more layers capable of encoding properties with higher frequencies might improve performance of the model. Testing this hypothesis is left for future work. The proposed technique can also be applied to unsupervised acoustic classifiers. [32] apply it to intermediate layers in the Q-network and additionally propose that both shapes and absolute values of learned representations can be inferred with non-linear regression.

The proposed technique can also serve for direct (albeit superficial) comparisons between intermediate convolutional layers and neural activity in the brain [59]. A few parallels are immediately available: the output at the fourth convolutional layer (Conv4) resembles the complex auditory brain stem response when subjects are presented with acoustic vocalic stimuli (as in [60]). Also, parallel to the intensity values (or acoustic envelope) which are encoded high in the structure of the convolutional network (up to the second and even first convolutional layer in the ciwGAN), the acoustic envelope is encoded relatively high in the brain as well (in the auditory cortex; [61]). The advantage of the proposed technique is that

it outputs time-series data and enables testing of which acoustic properties are encoded at which layers. This information can be used for comparison between the convolutional networks and various neuroimaging techniques (which also output time-series data).

REFERENCES

- [1] H. van der Hulst, "Discoverers of the phoneme," in *The Oxford Handbook of the History of Linguistics*, K. Allan, Oxford, U.K.: Oxford Univ. Press, Jul. 2013, pp. 167–191.
- [2] M. K. C. MacMahon, "Orthography and the early history of phonetics," in *The Oxford Handbook of the History of Linguistics*, K. Allan, Oxford, U.K.: Oxford Univ. Press, 2013, pp. 105–122. [Online]. Available: 10.1093/oxfordhb/9780199585847.013.0006
- [3] G. Beguš, "Generative adversarial phonology: Modeling unsupervised phonetic and phonological learning with neural networks," *Front. Artif. Intell.*, vol. 3, 2020, Art. no. 44. [Online]. Available: <https://www.frontiersin.org/articles/10.3389/frai.2020.00044/abstract>
- [4] G. F. Marcus, "CiwGAN and fiwGAN: Encoding information in acoustic data to model lexical learning with generative adversarial networks," *Neural Netw.*, vol. 139, pp. 305–325, 2021. [Online]. Available: <https://www.sciencedirect.com/science/article/pii/S0893608021001052>
- [5] M. Gasser, "Learning words in time: Towards a modular connectionist account of the acquisition of receptive morphology," Indiana Univ. Bloomington, Bloomington, IN, *Tech. Rep. 384*, 1993. [Online]. Available: <http://citeseerx.ist.psu.edu/viewdoc/summary?doi=10.1.1.73.6474>
- [6] G. F. Marcus, S. Vijayan, S. Bandi Rao, and P. M. Vishton, "Rule learning by seven-month-old infants," *Science*, vol. 283, no. 5398, pp. 77–80, 1999. [Online]. Available: <https://science.sciencemag.org/content/283/5398/77>
- [7] S. Brugiapaglia, M. Liu, and P. Tupper, "Generalizing outside the training set: When can neural networks learn identity effects?," in *Proc. 42nd Annu. Meeting Cogn. Sci. Soc.*, 2020, pp. 2057–2063.
- [8] W. J. Savitch, "A formal model for context-free languages augmented with reduplication," *Comput. Linguistics*, vol. 15, no. 4, pp. 250–261, Dec. 1989.
- [9] H. Dolatian and J. Heinz, "Computing and classifying reduplication with 2-way finite-state transducers," *J. Lang. Modelling*, vol. 8, no. 1, pp. 179–250, Sep. 2020. [Online]. Available: <https://jlm.ipipan.waw.pl/index.php/JLM/article/view/245>
- [10] Y. Wang, "Recognizing reduplicated forms: Finite-state buffered machines," in *Proc. 18th SIGMORPHON Workshop Comput. Res. Phonetics, Phonology, Morphology*, 2021, pp. 177–187. [Online]. Available: <https://aclanthology.org/2021.sigmorphon-1.20>
- [11] G. Beguš, "Local and non-local dependency learning and emergence of rule-like representations in speech data by deep convolutional generative adversarial networks," *Comput. Speech Lang.*, vol. 71, 2021, Art. no. 101244. [Online]. Available: <https://www.sciencedirect.com/science/article/pii/S0885230821000516>
- [12] M. D. Zeiler and R. Fergus, "Visualizing and understanding convolutional networks," in *Proc. Eur. Conf. Comput. Vis.*, Eds. D. Fleet, T. Pajdla, B. Schiele, T. Tuytelaars, 2014, pp. 818–833.
- [13] J. Huang, J. Li, and Y. Gong, "An analysis of convolutional neural networks for speech recognition," in *Proc. IEEE Int. Conf. Acoust., Speech Signal Process.*, 2015, pp. 4989–4993.
- [14] A. Krug and E. Maral, A. A., J. Jens, and S. Sebastian, "Analyzing and Visualizing Deep Neural Networks for Speech Recognition with Saliency-Adjusted Neuron Activation Profiles," *Electronics*, vol. 10, no. 11, 2021. [Online]. Available: <https://doi.org/10.3390/electronics10111350>
- [15] H. Muckenhirn, V. Abrol, M. Magimai-Doss, and S. Marcel, "Understanding and visualizing raw waveform-based CNNs," in *Proc. Annu. Conf. Int. Speech Commun. Assoc.*, 2019, pp. 2345–2349. [Online]. Available: <http://dx.doi.org/10.21437/Interspeech.2019-2341>
- [16] A. Chowdhury and A. A. Ross, "DeepVOX: Discovering features from raw audio for speaker recognition in non-ideal audio signals," 2022, *arXiv: vol. abs/2008.11668*, [Online]. Available: <https://doi.org/10.48550/arXiv.2008.11668>
- [17] Y. Shen, J. Gu, X. Tang, and B. Zhou, "Interpreting the latent space of GANs for semantic face editing," in *Proc. IEEE/CVF Conf. Comput. Vis. Pattern Recognit.*, 2020, pp. 9240–9249.
- [18] D. Bau et al., "Understanding the role of individual units in a deep neural network," in *Proc. Nat. Acad. Sci.*, 2020, doi: [10.1073/pnas.1907375117](https://doi.org/10.1073/pnas.1907375117).
- [19] M. Ravanelli and Y. Bengio, "Interpretable convolutional filters with SincNet," in *Proc. NIPS Interpretability Robustness Audio, Speech Lang. Workshop*, 2018, pp. 1–13.
- [20] A. Krug and S. Stober, "Introspection for convolutional automatic speech recognition," in *Proc. EMNLP Workshop BlackboxNLP: Analyzing Interpreting Neural Netw. NLP*, Brussels, Belgium, 2018, pp. 187–199. [Online]. Available: <https://www.aclweb.org/anthology/W18-5421>
- [21] A. Krug, R. Knaebel, and S. Stober, "Neuron activation profiles for interpreting convolutional speech recognition models," in *Proc. NeurIPS Workshop Interpretability Robustness Audio, Speech, Lang.*, 2018, pp. 1–13. [Online]. Available: <https://openreview.net/pdf?id=Bylpgfj7>
- [22] J. Millet and J.-R. King, "Inductive biases, pretraining and fine-tuning jointly account for brain responses to speech," 2021, [Online]. Available: <https://doi.org/10.48550/arXiv.2103.01032>
- [23] D. Palaz, R. Collobert, and M. Magimai-Doss, "Estimating phoneme class conditional probabilities from raw speech signal using convolutional neural networks," 2013. [Online]. Available: <http://arxiv.org/abs/1304.1018>
- [24] D. Palaz, M. Magimai-Doss, and R. Collobert, "Analysis of CNN-based speech recognition system using raw speech as input," in *Proc. Annu. Conf. Int. Speech Commun. Assoc.*, 2015, pp. 11–15.
- [25] D. Palaz, M. Magimai-Doss, and R. Collobert, "End-to-end acoustic modeling using convolutional neural networks for HMM-based automatic speech recognition," *Speech Commun.*, vol. 108, pp. 15–32, 2019. [Online]. Available: <https://www.sciencedirect.com/science/article/pii/S0167639316301625>
- [26] H. Muckenhirn, M. Magimai-Doss, and S. Marcel, "End-to-end convolutional neural network-based voice presentation attack detection," in *Proc. IEEE Int. Joint Conf. Biometrics*, 2017, pp. 335–341.
- [27] H. Muckenhirn, M. Magimai-Doss, and S. Marcell, "Towards directly modeling raw speech signal for speaker verification using CNNs," in *Proc. IEEE Int. Conf. Acoust., Speech Signal Process.*, 2018, pp. 4884–4888.
- [28] P. Golik, Z. Tüske, R. Schlüter, and H. Ney, "Convolutional neural networks for acoustic modeling of raw time signal in LVCSR," in *Proc. Annu. Conf. Int. Speech Commun. Assoc.*, 2015, pp. 26–30.
- [29] J. Springenberg, A. Dosovitskiy, T. Brox, and M. Riedmiller, "Striving for simplicity: The all convolutional net," in *Proc. Int. Conf. Learn. Representations*, 2015. [Online]. Available: <http://lmb.informatik.uni-freiburg.de/Publications/2015/DB15a>
- [30] T. Koumura, H. Terashima, and S. Furukawa, "Cascaded tuning to amplitude modulation for natural sound recognition," *J. Neurosci.*, vol. 39, no. 28, pp. 5517–5533, Jul. 2019.
- [31] D. Harwath and J. Glass, "Towards visually grounded sub-word speech unit discovery," in *Proc. IEEE Int. Conf. Acoust., Speech Signal Process.*, 2019, pp. 3017–3021.
- [32] G. Beguš and A. Zhou, "Interpreting intermediate convolutional layers in unsupervised acoustic word classification," in *Proc. IEEE Int. Conf. Acoust., Speech Signal Process.*, 2022, pp. 8207–8211. [Online]. Available: <https://doi.org/10.1109/ICASSP43922.2022.9746849>
- [33] K. Levin, K. Henry, A. Jansen, and K. Livescu, "Fixed-dimensional acoustic embeddings of variable-length segments in low-resource settings," in *Proc. IEEE Workshop Autom. Speech Recognit. Understanding*, 2013, pp. 410–415.
- [34] E. Dunbar et al., "The zero resource speech challenge 2020: Discovering discrete subword and word units," in *Proc. Annu. Conf. Int. Speech Commun. Assoc.*, 2020. [Online]. Available: <http://dx.doi.org/10.21437/Interspeech.2020-2743>
- [35] J. Chorowski, R. J. Weiss, S. Bengio, and A. van den Oord, "Unsupervised speech representation learning using WaveNet autoencoders," *IEEE/ACM Trans. Audio, Speech, Lang. Process.*, vol. 27, no. 12, pp. 2041–2053, Dec. 2019.
- [36] H. Kamper, "Truly unsupervised acoustic word embeddings using weak top-down constraints in encoder-decoder models," in *Proc. IEEE Int. Conf. Acoust., Speech Signal Process.*, 2019, pp. 6535–6539.
- [37] B. v. Niekerk, L. Nortje, and H. Kamper, "Vector-quantized neural networks for acoustic unit discovery in the ZeroSpeech 2020 challenge," in *Proc. Annu. Conf. Int. Speech Commun. Assoc.*, 2020, pp. 4836–4840. [Online]. Available: <http://dx.doi.org/10.21437/Interspeech.2020-1693>
- [38] Y.-A. Chung, H. Tang, and J. Glass, "Vector-quantized autoregressive predictive coding," in *Proc. Annu. Conf. Int. Speech Commun. Assoc.*, 2020, pp. 3760–3764. [Online]. Available: <http://dx.doi.org/10.21437/Interspeech.2020-1228>

- [39] M. Chen and T. Hain, "Unsupervised acoustic unit representation learning for voice conversion using WaveNet auto-encoders," in *Proc. Annu. Conf. Int. Speech Commun. Assoc.*, 2020, pp. 4866–4870. [Online]. Available: <http://dx.doi.org/10.21437/Interspeech.2020-1785>
- [40] R. Eloff et al., "Unsupervised acoustic unit discovery for speech synthesis using discrete latent-variable neural networks," in *Proc. Annu. Conf. Int. Speech Commun. Assoc.*, 2019, pp. 1103–1107.
- [41] C. Shain and M. Elsner, "Measuring the perceptual availability of phonological features during language acquisition using unsupervised binary stochastic autoencoders," in *Proc. Conf. North Amer. Chapter Assoc. Comput. Linguistics: Human Lang. Technol.*, 2019, pp. 69–85. [Online]. Available: <https://www.aclweb.org/anthology/N19-1007>
- [42] A. Baevski, Y. Zhou, A. Mohamed, and M. Auli, "wav2vec 2.0: A framework for self-supervised learning of speech representations," in *Proc. Adv. Neural Inf. Process. Syst.*, 2020, pp. 12449–12460. [Online]. Available: <https://proceedings.neurips.cc/paper/2020/file/92d1e1eb1cd6f9fba3227870bb6d7f07-Paper.pdf>
- [43] Y. Wu, Y. Burda, R. Salakhutdinov, and R. Grosse, "On the quantitative analysis of decoder-based generative models," in *Proc. Int. Conf. Learn. Representations*, 2017, pp. 1–17. [Online]. Available: <https://openreview.net/forum?id=B1M8JF9xx>
- [44] A. Baevski, W.-N. Hsu, A. Conneau, and M. Auli, "Unsupervised speech recognition," in *Proc. Adv. Neural Inf. Process. Syst.*, 2021, pp. 960–971.
- [45] N. Zeghidour, N. Usunier, G. Synnaeve, R. Collobert, and E. Dupoux, "End-to-end speech recognition from the raw waveform," in *Proc. Annu. Conf. Int. Speech Commun. Assoc.*, 2018, pp. 781–785. [Online]. Available: <http://dx.doi.org/10.21437/Interspeech.2018-2414>
- [46] C. Donahue, J. J. McAuley, and M. S. Puckette, "Adversarial audio synthesis," in *Proc. 7th Int. Conf. Learn. Representations*, New Orleans, LA, USA, 2019, pp. 1–16. [Online]. Available: <https://openreview.net/forum?id=ByMVTsR5KQ>
- [47] A. Radford, L. Metz, and S. Chintala, "Unsupervised representation learning with deep convolutional generative adversarial networks," in *Proc. 4th Int. Conf. Learn. Representations*, Eds. S. Juan, P. Rico, May 2016. [Online]. Available: <http://arxiv.org/abs/1511.06434>
- [48] X. Chen, Y. Duan, R. Houthoofd, J. Schulman, I. Sutskever, and P. Abbeel, "InfoGAN: Interpretable representation learning by information maximizing generative adversarial nets," in *Proc. Adv. Neural Inf. Process. Syst.*, 2016, pp. 2172–2180. [Online]. Available: <http://papers.nips.cc/paper/6399-infoGAN-interpretation-learning-by-information-maximizing-generative-adversarial-nets.pdf>
- [49] M. Arjovsky, S. Chintala, and L. Bottou, "Wasserstein generative adversarial networks," in *Proc. 34th Int. Conf. Mach. Learn.*, 2017, pp. 214–223. [Online]. Available: <http://proceedings.mlr.press/v70/arjovsky17a.html>
- [50] I. Gulrajani et al., "Improved training of Wasserstein GANs," in *Proc. Adv. Neural Inf. Process. Syst.*, 2017, pp. 5767–5777. [Online]. Available: <http://papers.nips.cc/paper/7159-improved-training-of-wasserstein-gans.pdf>
- [51] J. S. Garofolo et al., "TIMIT acoustic-phonetic continuous speech corpus," *Linguistic Data Consortium*, Nov. 1993, doi: [10.35111/17gk-bn40](https://doi.org/10.35111/17gk-bn40).
- [52] G. Beguš, "Identity-based patterns in deep convolutional networks: Generative adversarial phonology and reduplication," *Trans. Assoc. Comput. Linguistics*, vol. 9, pp. 1180–1196, 2021. [Online]. Available: https://doi.org/10.1162/tacl_a_00421
- [53] V. Panayotov, G. Chen, D. Povey, and S. Khudanpur, "Librispeech: An ASR corpus based on public domain audio books," in *Proc. IEEE Int. Conf. Acoust., Speech Signal Process.*, 2015, pp. 5206–5210.
- [54] Y. Xu, "Prosodypro – A tool for large-scale systematic prosody analysis," in *Proc. Tools Resour. Anal. Speech Prosody*, Aix-en-Provence, France, 2013, pp. 7–10.
- [55] P. Boersma and D. Weenink, "Praat: Doing phonetics by computer [computer program], version 5.4.06." Retrieved 21 Feb. 2015. [Online]. Available: <http://www.praat.org/>
- [56] Y. Xu and H. Gao, "FormantPro as a tool for speech analysis and segmentation / FormantPro como uma ferramenta para a análise e segmentação da fala," *Revista de Estudos da Linguagem*, vol. 26, no. 4, pp. 1435–1454, 2018. [Online]. Available: <http://www.periodicos.letras.ufmg.br/index.php/relin/article/view/13015>
- [57] W. Ping et al., "Deep Voice 3: Scaling Text-to-Speech with Convolutional Sequence Learning," in *Proc. Int. Conf. Learn. Representations*, 2018, pp. 1–16. [Online]. Available: <https://openreview.net/forum?id=HJtEm4p6Z>
- [58] Y.-A. Chung, C.-C. Wu, C.-H. Shen, H.-Y. Lee, and L.-S. Lee, "Audio word2vec: Unsupervised learning of audio segment representations using sequence-to-sequence autoencoder," in *Proc. Annu. Conf. Int. Speech Commun. Assoc.*, 2016, pp. 765–769. [Online]. Available: <http://dx.doi.org/10.21437/Interspeech.2016-82>
- [59] G. Beguš, A. Zhou, and T. C. Zhao, "Encoding of speech in convolutional layers and the brain stem based on language experience," *bioRxiv*, 2022. [Online]. Available: <https://www.biorxiv.org/content/early/2022/01/04/2022.01.03.474864>
- [60] T. C. Zhao and P. K. Kuhl, "Linguistic effect on speech perception observed at the brainstem," *Proc. Nat. Acad. Sci.*, vol. 115, no. 35, pp. 8716–8721, 2018. [Online]. Available: <https://www.pnas.org/content/115/35/8716>
- [61] Y. Oganian and E. F. Chang, "A speech envelope landmark for syllable encoding in human superior temporal gyrus," *Sci. Adv.*, vol. 5, no. 11, 2019, Art. no. eaay6279. [Online]. Available: <https://advances.sciencemag.org/content/5/11/eaay6279>