

Received October 22, 2020, accepted November 12, 2020, date of publication November 17, 2020,  
date of current version November 30, 2020.

Digital Object Identifier 10.1109/ACCESS.2020.3038645

# A Machine Learning Approach to Predict the Average Localization Error With Applications to Wireless Sensor Networks

ABHILASH SINGH<sup>1</sup>, (Member, IEEE), VAIBHAV KOTIYAL<sup>2</sup>, SANDEEP SHARMA<sup>2</sup>,  
JAIPRAKASH NAGAR<sup>3</sup>, (Member, IEEE), AND CHENG-CHI LEE<sup>4,5</sup>, (Member, IEEE)

<sup>1</sup>Fluvial Geomorphology and Remote Sensing Laboratory, Indian Institute of Science Education and Research at Bhopal, Bhopal 462066, India

<sup>2</sup>Department of Electronics and Communication Engineering, Gautam Buddha University, Greater Noida 201312, India

<sup>3</sup>Subir Chowdhury School of Quality and Reliability, IIT Kharagpur, Kharagpur 721302, India

<sup>4</sup>Research and Development Center for Physical Education, Health, and Information Technology, Department of Library and Information Science, Fu Jen Catholic University, New Taipei City 242, Taiwan

<sup>5</sup>Department of Photonics and Communication Engineering, Asia University, Taichung 41354, Taiwan

Corresponding authors: Sandeep Sharma (sandeepsvce@gmail.com) and Cheng-Chi Lee (cclee@mail.fju.edu.tw)

**ABSTRACT** Node localisation is one of the significant concerns in Wireless Sensor Networks (WSNs). It is a process in which we estimate the coordinates of the unknown nodes using sensors with known coordinates called anchor nodes. Several bio-inspired algorithms have been proposed for accurate estimation of the unknown nodes. However, use of bio-inspired algorithms is a highly time-consuming process. Hence, finding optimal network parameters for node localisation during the network set-up process with the desired accuracy in a short time is still a challenging task. In this article, we have proposed an efficient way to evaluate the optimal network parameters that result in low Average Localisation Error (ALE) using a machine learning approach based on Support Vector Regression (SVR) model. We have proposed three methods (S-SVR, Z-SVR and R-SVR) based on feature standardisation for fast and accurate prediction of ALE. We have considered the anchor ratio, transmission range, node density and iterations as features for training and prediction of ALE. These feature values are extracted from the modified Cuckoo Search (CS) simulations. In doing so, we found that all the methods perform exceptionally well with method R-SVR outperforming the other two methods with a correlation coefficient ( $R = 0.82$ ) and Root Mean Square Error (RMSE = 0.147m).

**INDEX TERMS** ALE, modified CS algorithm, SVR model, GPR model, WSNs.

## I. INTRODUCTION

A WSN consists of a set of miniature and inexpensive sensors that are spatially distributed over an area to measure the physical parameters or monitor the habitat conditions and also have many practical areas of implementation such as target tracking, precision agriculture, *etc.*, [1]–[6]. In most of the applications, these sensors need to estimate their coordinates accurately with minimum resource requirements. These sensors can quickly locate their coordinates using an integrated Global Positioning System (GPS) system. However, it is not practically feasible to integrate GPS in all the sensors due to its size and cost. An alternate approach is to use the concept of localisation algorithms in which several anchor nodes (with

integrated GPS) will assist the unknown nodes to determine their coordinates accurately.

A large number of localisation algorithms have been introduced to solve different localisation problems [7]. These algorithms are expected to be flexible so that it can work well in various diverse indoor and outdoor scenarios and topologies. These localisation algorithms have been divided into two categories, *viz.*, range-based algorithms and range-free algorithms. In range-based algorithms, the location of the unknown nodes is computed with the help of distance between the anchor and unknown sensor nodes. They utilise the ranging metrics such as the angle of arrival, time of arrival, and the Received Signal Strength Indication (RSSI) [8]–[10]. In contrast, the range-free algorithms such as ad-hoc positioning system [11] and centroid [12], *etc.*, make use of simple operations related to the connectivity to localise the

The associate editor coordinating the review of this manuscript and approving it for publication was Tie Qiu<sup>1</sup>.

unknown node. They only need the existence of the beacon signal in the medium by the anchor node. Among both, the range-based algorithms are widely employed and preferred over the range-free algorithms [13]–[15].

To design a less complicated algorithm; various bio-inspired algorithms have been proposed for range-based approach [16]. Initially, Gopakumar and Jacob [17] rendered a node localisation method formed on Particle Swarm Optimisation (PSO) [18], which imitated the behaviour of a fish swarm to search for food. This algorithm showed good initial results, but the implementation tended to get caught in a local optimum, which results in premature convergence. In 2014, Goyal and Patterh [19] implemented CS for node localisation in WSNs. It showed noticeable results to minimise the localisation error. This is mainly because of the tuning parameters in the CS algorithm, which ease the calculation process. Recently, a modified version of CS was proposed by Cheng and Xia [20], which improved the convergence rate of the conventional CS algorithm. They modified the random walk step size and the mutation probability to improve the search process.

ALE metrics assess the accuracy of these localisation algorithms. We select an algorithm that has the minimum ALE value. The major problem after selecting a bio-inspired algorithm for node localisation is the computational time. During any network set-up, we need to run the algorithm many times in order to find the optimal network parameters (such as anchor ratio, transmission range, node density, *etc.*) and to tune the ALE below the threshold for the desired scenario. To deal with this limitation, we have proposed an efficient machine learning approach for accurate and fast prediction of ALE in such a scenario. As far as we know, no other study has been conducted and published to address this issue.

In this article, we have presented three methods based on the SVR model. We have selected and extracted four features, namely anchor ratio, transmission range, node density and number of iterations from the modified CS algorithm. Eventually, we input this data to train the SVR model and obtained the predicted ALE using the trained SVR model for all the three methods.

Further, we have divided this article into six sections. In Section II, we have discussed the related works. In Section III, we have discussed the system model for the node localisation problem. Furthermore, we have also discussed the details of the features importance, hyperparameter tuning and SVR model. Afterwards, in Section IV, we have discussed the simulation scenarios and parameters for the modified CS and SVR model. In Section V, we have discussed the results of all the three methods for ALE prediction. Finally, in Section VI and VII, we have presented the discussion and conclusion respectively.

## II. RELATED WORKS

In this section, we have discussed the several methods for improving the node localisation accuracy. Several studies have been conducted to improve localisation accuracy

using machine learning. Morelande *et al.* [21] introduced a Bayesian algorithm for node localisation in WSNs. The proposed algorithm is a refinement of a previous work referred to as progressive correction [22]. Both these methods are compared in different scenarios keeping Cramér–Rao bound (CRB) as the benchmark. The proposed algorithm proved to be more accurate than its predecessor. Further, Ghargan *et al.* [23] presented an approach in which Artificial Neural Network (ANN) is hybridised individually with three optimisation algorithms: Particle Swarm Optimisation (PSO), Backtracking Search Algorithm (BSA) and Gravitational Search Algorithm (GSA). The GSA-ANN hybrid proved to outperform the other methods with a mean absolute distance estimation error of 0.02m and 0.2m for outdoor and indoor scenarios, respectively. In a recent survey, Ahmadi and Bouallegue [24] compiled the different state-of-the-art machine learning techniques utilised in node localisation in WSNs. It compared the cumulative localisation error distribution curve of various techniques like ANN, Support Vector Machine (SVM), Decision Tree (DT) and Naive Bayes (NB) method. This study reported that NB outperformed all the other machine learning techniques based on their cumulative localisation error distributions. Bhatti *et al.* [25] developed an outlier detection algorithm named “iF\_Ensemble” for an indoor localisation environment using a combination of different supervised, unsupervised, and ensemble machine learning methods. Here, the supervised learning techniques are K-nearest neighbour (KNN), Random Forest (RF) classifiers and SVM, whereas unsupervised learning techniques is isolation Forest (iForest). These techniques are used with stacking, that is an ensemble learning method. The model, including stacking, is compared with the individual performances of the machine learning algorithms involved. The stacking model provides high localisation accuracy of 97.8% with proposed outlier detection methods. Recently, Wang *et al.* [26] introduced a node localisation algorithm named Kernel Extreme Learning Machines based on Hop-count Quantization (KELM-HQ). The trained KELM computes the locations of the unknown nodes. The proposed algorithm proves the localisation error to be improved by 34.6% when compared with fast-SVM, 19.2% when compared with GADV-Hop algorithm, and 11.9% when compared with DV-Hop-ELM algorithm.

Overall, this study aims to overcome the limitation of localisation accuracy in previous studies by using a regression-based machine learning approach.

## III. SYSTEM MODEL

In this section, first, we have discussed the system architecture designed for the node localisation process. Then we have discussed the method to compute the distance between the anchor and unknown nodes. Afterwards, we have discussed the objective function formation and working of the modified CS algorithm for node localisation. Finally, we have discussed the details of the machine learning model used.

## A. SYSTEM ARCHITECTURE

The sensor nodes are considered to be deployed randomly inside a region with area  $X \times Y$  square units. The system consists of  $M$  anchor nodes. These anchor nodes act as a reference for all  $N$  unknown nodes of the network, which need to be localised. All the sensors can transmit/receive data within a transmission range of  $R$  distance units. The anchor's positional information is utilised as a reference to evaluate the coordinates of all the localisable unknown nodes. An unknown node is considered localisable only if it has at the minimum three anchor nodes inside its communication range.

## B. DISTANCE CALCULATION AND OPTIMISATION PROBLEM FORMATION

The RSSI is used by the unknown nodes to calculate their distances from the anchor nodes. Sensors experience a power loss during the exchange of information because of shadowing and multipath fading. This path loss is modelled as log-normal shadowing [27], which is expressed as shown in Eq.(1):

$$PL(d) = PL_0 + 10 \times \eta \times \log_{10}\left(\frac{d}{d_0}\right) + X_g \quad (1)$$

In Eq.(1),  $PL(d)$ ,  $PL_0$ , and  $d$  represent total path loss (transmitted power – received power), path loss at a reference distance  $d_0$ , and the distance between the transmitter and the receiver respectively. Besides,  $\eta$  denotes the path loss exponent showing how the strength of the received signal decreases with the increase in distance between transmitter and receiver [28]. The value of  $\eta$  relies on various parameters such as signal frequency, antenna height, and the propagation environment [27]. Generally, the value of  $\eta$  lies in the range of 2-6 [29] and is higher than 4 for indoor or shadowed environment [30]. Furthermore,  $\sigma$  represents the standard deviation of shadowing effects, and its value varies with the signal propagation environment and is generally higher than 4 dB [31].  $X_g$  is a Gaussian random value representing the attenuation caused by fading.

A ranging error is experienced as the result of log-normal shadowing. This ranging error observes a zero-mean Gaussian distribution. Its variance  $\sigma^2$  is expressed in Eq.(2):

$$\sigma^2 = \gamma^2 \times D_{ij}^2 \quad (2)$$

where,  $\gamma$  represents the localisation error between the actual and measured Euclidean distance  $D_{ij}$  between  $i^{th}$  node  $(x_i, y_i)$  and the  $j^{th}$  node  $(x_j, y_j)$  and is known as Gaussian noise having mean zero and standard deviation one. We have considered the value of  $\gamma$  equal to 0.1 as it is the most appropriate value used in literature [20], [32]. Eq. (2) shows that the standard deviation of the ranging error varies linearly with the actual distance between two nodes. The real distance  $D_{ij}$  can be calculated using the following Eq.(3):

$$D_{ij} = \sqrt{(x_i - x_j)^2 + (y_i - y_j)^2} \quad (3)$$

A circular disk model has been adopted to establish network connectivity: two nodes  $i$  and  $j$  can converse with each other only if  $D_{ij} \leq R$ , where  $R$  is the transmission range of both the sensor nodes.

The measured distance is represented by  $D'_{ij}$ , and is given by the expression in Eq.(4):

$$D'_{ij} = D_{ij} + N_{ij} \quad (4)$$

where,  $N_{ij}$  is the ranging error between node  $i$  and  $j$ .

While calculating the position of the unknown nodes, there always exists a ranging error. So, we need to evaluate the position of the unknown nodes as precisely as possible, considering this inevitable ranging error. To achieve this, we formulate an Optimisation Function (OF), which is the mean of the square of the error between the actual distance of evaluated node coordinates and the estimated distance of actual unknown node coordinates from the neighbouring anchor nodes. Let,  $(x_i, y_i)$  and  $(x_j, y_j)$  be the position of  $i^{th}$  unknown node and  $j^{th}$  anchor node respectively. The OF is given in Eq.(5):

$$OF(x_i, y_i) = \frac{1}{M} \times \sum_{j=1}^M (D_{ij} - D'_{ij})^2 \quad (5)$$

where,  $M \geq 3$ , because an unknown node should have at the minimum three anchor nodes within its transmission range to be considered as localisable (trilateration rule). The  $(x_i, y_i)$  corresponding to the minimum value of the OF is the evaluated position of the unknown node.

## C. MODIFIED CS ALGORITHM FOR NODE LOCALISATION

Modified CS is a bio-inspired meta-heuristic algorithm [20] used for node localisation in WSNs. It estimates the coordinates of the unknown nodes in the network by initialising a random population of candidate solutions for every unknown node. Afterwards, it calculates the fitness value for each solution using the OF (using Eq.(5)). The worst out of the candidate solutions are replaced by a new set of randomly allocated candidate solutions. This process continues over a predetermined number of iterations, then the coordinates corresponding to the global best solutions are selected as the coordinates of the unknown nodes in the network for each of the node.

## D. MACHINE LEARNING MODEL

Broadly, learning algorithms are divided into supervised and unsupervised learning. Further, supervised learning is classified into classification and regression learning, whereas unsupervised learning is classified into clustering and dimension reduction techniques [33].

In this article, our objective is to assess the potentiality of regression-based machine learning algorithms for estimating the node localisation error. The key objective of regression-based machine learning algorithms is to predict the predictand based on a mapping function. This mapping

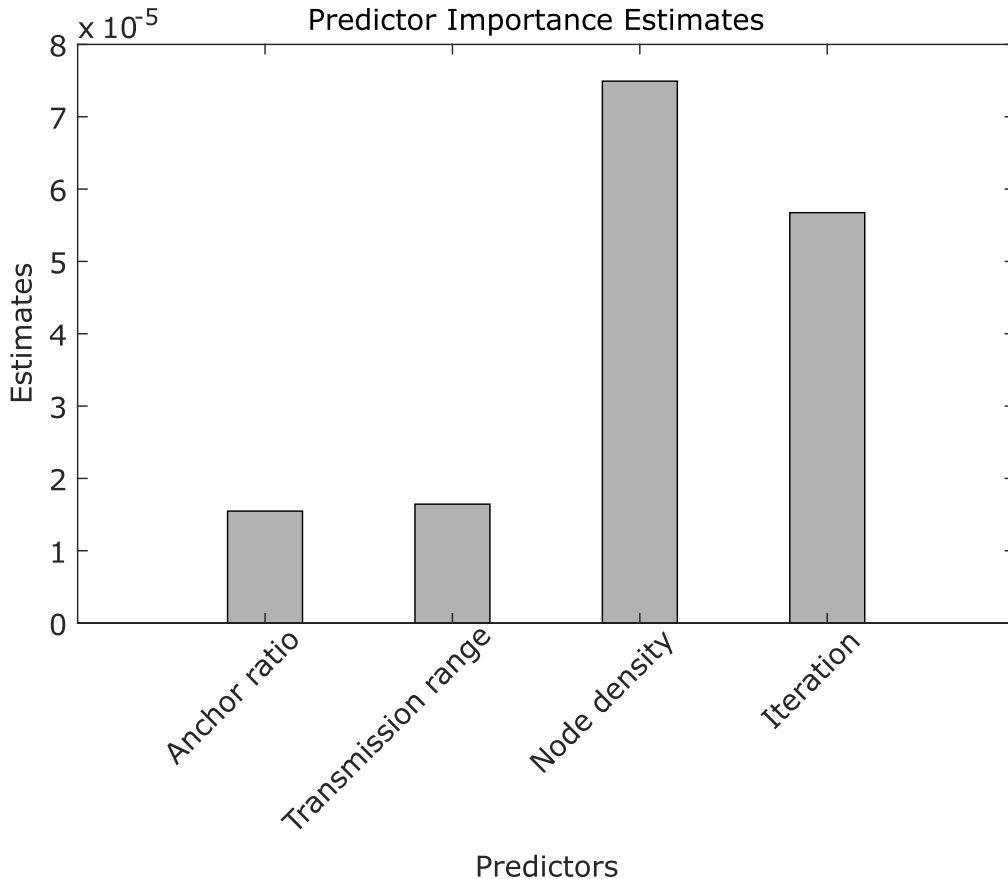


FIGURE 1. Predictor importance graph.

function is modelled by feeding a set of features and predictand data known as training data set. In doing so, we have selected the SVR algorithm. SVR is used in many applications such as image processing [34], [35], remote sensing [36], and blockchain [37]. It has superb generalisation competence along with high accuracy. Also, the computational complexity is independent of the input feature data set [38].

### 1) FEATURE IMPORTANCE

In this article, we have evaluated the feature's importance by regression ensemble approach. First, we have trained a regression ensemble model. It contains the results of boosting hundred regression trees (number of ensemble learning cycle) using LSBoost ensemble aggregation approach, feature data and the predictand data. We have used the regression tree, weak learner, with unity learning rate. After creating an ensemble, we calculated the estimate of the predictor or feature importance by summing these estimates over all the weak learners in it. In doing so, we plotted the feature importance graph (Fig. 1). We found that out of the four features, the node density is the most important feature followed by the number of iterations. In contrast, the anchor ratio and the transmission range has nearly equal importance. Further, we have

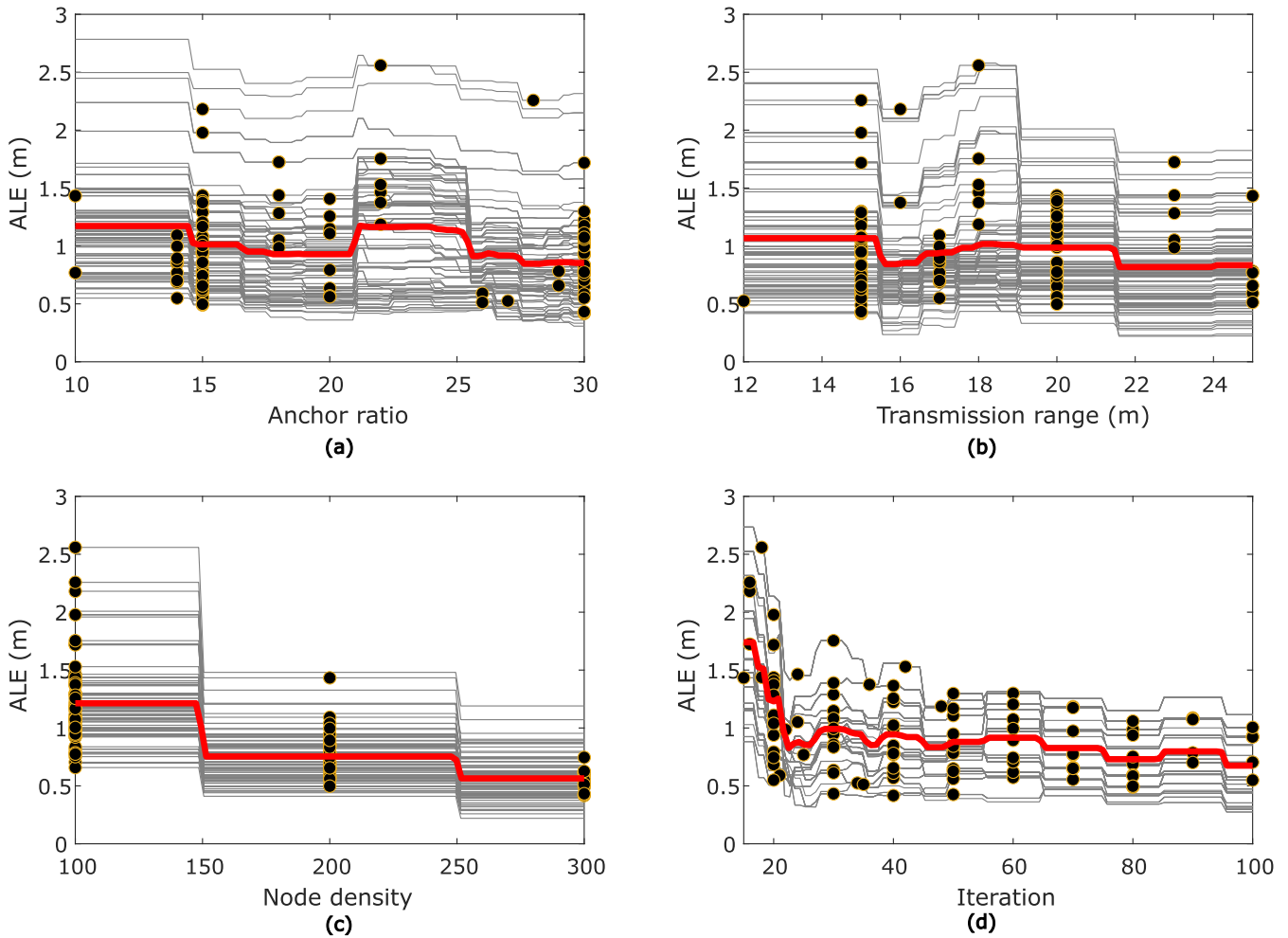
estimated the partial dependency of the features on the predictand (Fig. 2). In the same plot, we have also plotted the individual conditional expectation of each data.

### 2) HYPER-PARAMETER OPTIMISATION

SVR is used to learn from data indicating excellent performance in prediction and pattern recognition. It is also benefited from the big data collected from onboard analysis. The hyper-parameters have a significant influence on SVR's predictive efficiency. The SVR's efficiency is determined by the different hyper-parameters such as  $C$  and  $\epsilon$ , which helps in identifying the training error. If the residual is higher than hyper-parameter  $\epsilon$ , then the parameter  $C$  penalises the training error. Thus, minimal  $C$  values lead to computational complexity, while too large  $C$  values lead to model under-fitting.

In this article, we have used the universal grid search approach to optimise the hyper-parameter present in the SVR model. In this study, we optimise the penalty factor,  $C$ , in the SVR model by keeping the  $\epsilon$ , constant. We have selected the famous Mean Square Error (MSE) function as the loss or objective function (using Eq. (6)) for optimisation.

$$\frac{1}{n} \sum_{i=1}^n (Y_i - \hat{Y}_i)^2 \quad (6)$$



**FIGURE 2.** Partial Dependence Plot (PDP) and Individual Conditional Expectation (ICE) plots.

We have selected the  $C$  value, which corresponds to the minimum value of the objective function for all the three methods.

### 3) SUPPORT VECTOR REGRESSION MODEL

SVR was initially proposed by Drucker *et al.*, which is a supervised learning technique, based on the concept of Vapnik’s support vectors [39], [40]. SVR aims at reducing the error by determining the hyperplane and minimising the range between the predicted and the observed values. Minimising the value of  $w$  in the Eq.(7) is similar to the value defined to maximise the margin, as shown in Fig. 3.

$$\min ||w||^2 + C \sum_i^n (\xi_i^+ + \xi_i^-) \quad (7)$$

where,  $\sum_i^n (\xi_i)$  represents an empirical error. Hence, to minimise this error, Eq.(8) is being used.

$$f(x) = \sum_i^n (\alpha_i^* + a_i)K(x, x_i) + B \quad (8)$$

where,  $(\alpha_i^*, a_i) \geq 0$  represents the Lagrange multiplier,  $K(x, x_i)$  represents the kernel function and  $B$  represents the bias term. In this study, we have used the Polynomial kernel given by:

$$K(x, x_i) = \gamma(x * x_i + 1)^d \quad (9)$$

where  $d$  is the polynomial degree and  $\gamma$  is the polynomial constant.

SVR performs better performance prediction than other algorithms like Linear Regression, KNN and Elastic Net, due to the improved optimisation strategies for a broad set of variables. Moreover, it is also flexible in dealing with geometry, transmission, data generalisation and additional functionality of kernel [41]. This additional functionality enhances the model capacity for predictions by considering the quality of features [42].

The training samples influence the SVR model’s fitting performance since the SVR algorithm is sensitive to the interference in the training data. Besides, SVR is useful in resolving high dimensional features regression problem, and well-function if the feature metrics is larger than the size of the sample [43]. In this study, we have extracted four features,



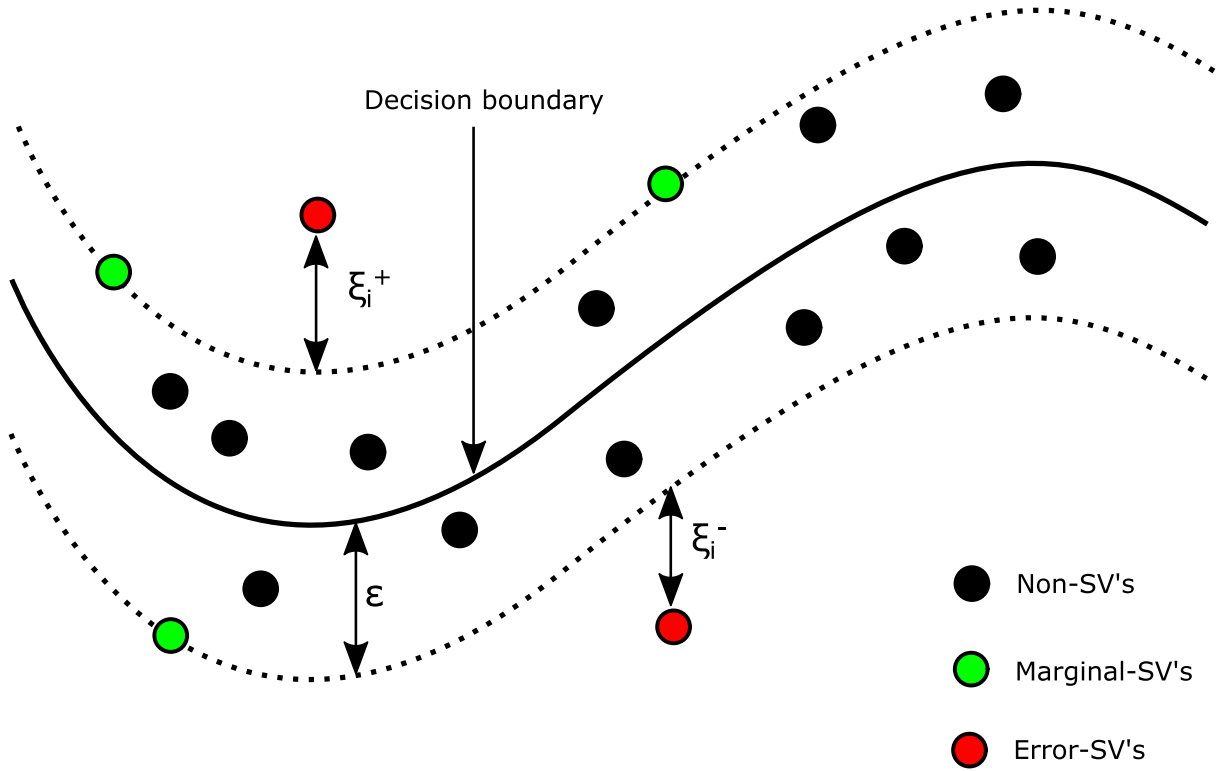


FIGURE 3. Structure of support vector regression.

namely anchor ratio, transmission range, node density and the number of iterations from modified CS algorithm simulation.

Feature scaling is essential for SVR because, when one function has greater magnitudes than others, the other features will dominate while measuring the distance. To avoid this, we have used various standardisation approaches. Based on which, we have proposed three methods, as shown in Fig. 4. The method I is S-SVR (Scaling SVR). In this method, we first standardised the features using Eq.(10):

$$x_s = \frac{x}{\sigma} \tag{10}$$

where  $x$  is the feature vector,  $x_s$  is the standardised data, and  $\sigma$  is the standard deviation of the feature vector. The method II is Z-SVR (Z-score SVR). In this method, we have standardised the features using Eq.(11):

$$x_s = \frac{x - \bar{x}}{\sigma} \tag{11}$$

where  $\bar{x}$  is the mean of the feature vector. The method III is the R-SVR (Range SVR). In this method, we have standardised the features using Eq.(12):

$$x_s = \frac{x - x_{\min}}{x_{\max} - x_{\min}} \tag{12}$$

Afterwards, we trained and tested the SVR models in 70:30 ratio, as shown in Fig. 4. In this study, the dimension of the features vector are  $107 \times 1$ . Hence, we have used 75 data for training and the remaining 32 for testing.

#### IV. SIMULATION EXPERIMENT

In this section, we have discussed the simulation environment of the modified CS algorithm and the SVR model.

##### A. ALE SIMULATION USING MODIFIED CS ALGORITHM

For the calculation of ALE, we set up a simulation environment of  $100 \times 100 \text{ m}^2$ , and we vary the parameters like node density, anchor ratio and transmission range of each node to calculate ALE for different network configurations. Modified CS has some tuning parameters like step size  $\alpha$  and mutation probability  $P_a$ , which lie in the ranges 0.9 to 1.0 and 0.05 to 0.25 respectively. The number of candidate solutions is fixed at 25. The maximum number of iterations allowed to localise each unknown node is set to 100.

##### B. SVR SIMULATION FOR ALE PREDICTION

For simulating the SVR model, we performed the hyper-parameter tuning through the grid search algorithm. In doing so, we fixed one of the hyper-parameter (*i.e.*,  $\epsilon$  at 0.01) and applied the grid search algorithm to find the value of the other hyper-parameter. We created a  $100 \times 100$  grid for the penalty factor,  $C$ . Each grid represents a specific value of  $C$ . On simulating the grid search algorithm, it finds an optimal grid that corresponds to the minimum value of the MSE. The range of optimal  $C$  for all the three methods along with the other simulation parameter value is given in Table 2.

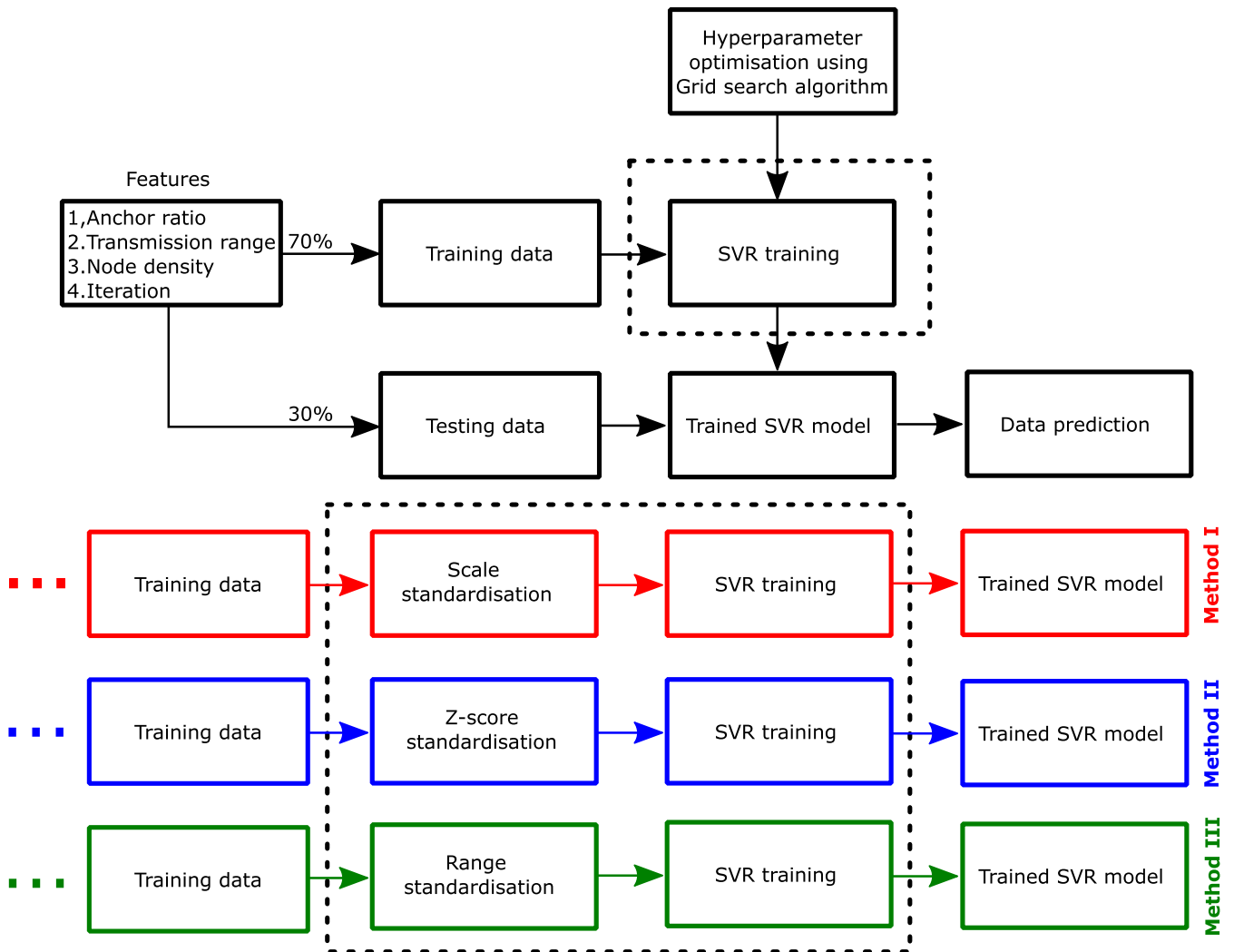


FIGURE 4. Flowchart of the methodology.

TABLE 1. Simulation parameters for Modified CS algorithm.

Simulation Parameter	Description	Values
Deployment Area ( $m^2$ )	The simulation area of the WSNs where all the sensor nodes are deployed	$100 \times 100$
Node Density	The total number of sensor nodes in the test area	100, 200, 300
Anchor Ratio (%)	Percentage of anchor nodes out of the total nodes in the network	15 to 30
Communication Range (m)	The distance up to which a sensor node can communicate	15 to 25
$\alpha$	Step-size	0.9 to 1.0
$P_a$	Mutation probability	0.05 to 0.25
$N_{nest}$	Number of candidate solutions	25
$N_{itertotal}$	Number of iterations to localise each unknown node	14 to 100

TABLE 2. Simulation parameters for SVR model.

Parameters	Values
Penalty factor (C)	0.01 to 0.1
Epsilon ( $\epsilon$ )	0.01
Kernel	Polynomial
Polynomial degree (d)	2
Gamma ( $\gamma$ )	1

V. RESULTS

In this section, we have presented the results of the method I, II and III for ALE prediction in the respective subsections.

We have plotted a linear regression curve between the predicted ALE and the simulated ALE for comparison.

A. PERFORMANCE OF THE METHOD I

We have compared the predicted ALE results, thus obtained by the method I with the simulated results of the modified CS algorithm. We found that predicted results accorded well with the simulated results and gathered along the straight regression line with mild scattering (Fig. 5). The shaded grey region corresponds to the 95% Confidence Interval

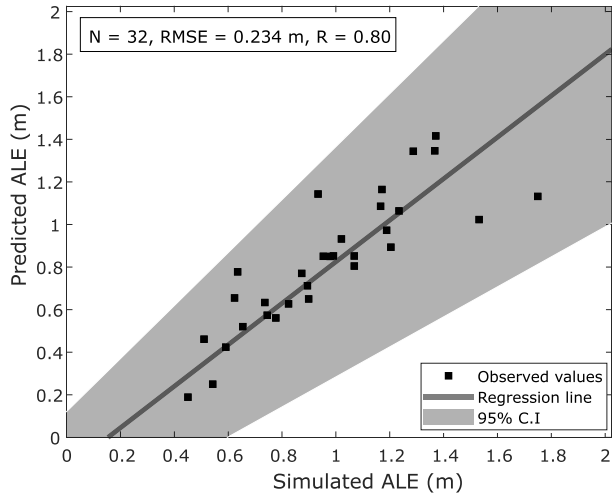


FIGURE 5. Prediction results for ALE using method I.

(CI) of the regression line and suggests that the predicted result has a strong positive correlation with  $R = 0.80$  and  $RMSE = 0.23m$ .

**B. PERFORMANCE OF THE METHOD II**

Once we calculated the predicted ALE through method II, we have evaluated its performance with the simulated results of the modified CS algorithm. In doing so, we found a good agreement between the both with  $R = 0.81$  and  $RMSE = 0.20m$  (Fig. 6). However, some observed values lie outside the CI of the regression line due to the overestimation of the ALE value by the SVR model. The overestimation probably occurs due to the positive bias. This type of error comes under systematic error which is mainly due to model or approach used.

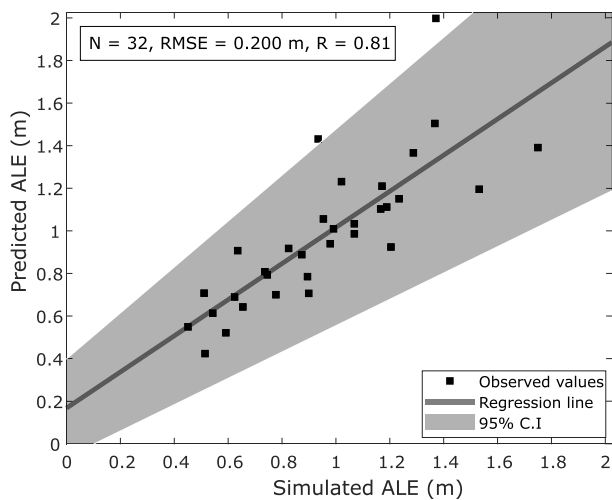


FIGURE 6. Prediction results for ALE using method II.

**C. PERFORMANCE OF THE METHOD III**

We have compared the predicted ALE of the method III with the simulated ALE obtained through modified CS algorithm.

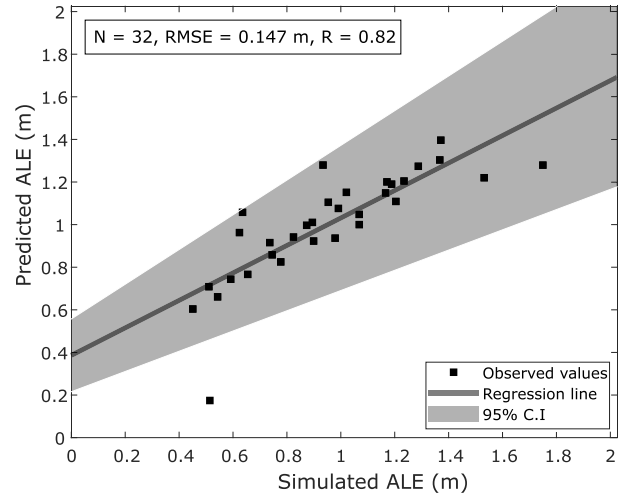


FIGURE 7. Prediction results for ALE using method III.

In this case, also, we found a strong correlation between the variables (Fig. 7). Here, we found a pragmatic correlation of  $R = 0.82$  with  $RMSE = 0.15m$ .

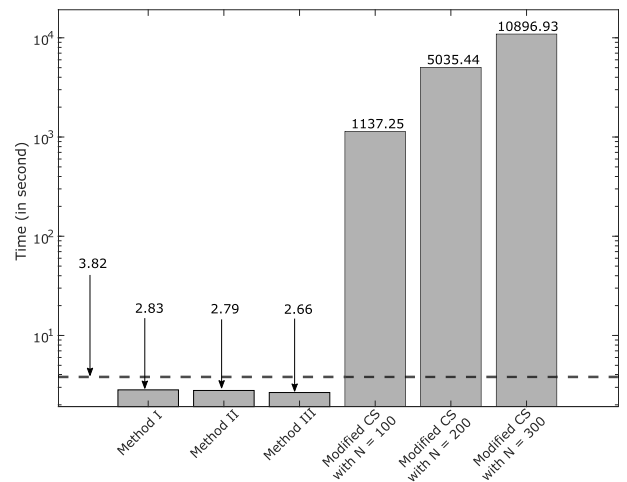


FIGURE 8. Comparison of the computation time for method I, II, III with different scenarios of modified CS algorithm.

**VI. DISCUSSION**

In this section, we have first discussed the performance of all the three methods in terms of computational efficiency. In doing so, we have calculated the computational time required to predict or calculate the ALE. Further, to ensure a fair comparison of the proposed methods with the existing modified CS, we have compared the obtained results with the computational time of the modified CS simulated results for three different configurations *i.e.*, computational time for node density 100, 200 and 300 have been plotted by taking the transmission range of 20m and an anchor node of 20 in  $100 \times 100 m^2$  area (Fig. 8). In this figure, the time axis is in log scale. The dotted line shows the computational time



**TABLE 3. Comparison of the proposed methods with the benchmark.**

Parameters	Methods					
	Method I (S-SVR)	Method II (Z-SVR)	Method III (R-SVR)	Scaling-GPR (S-GPR)	Z-score-GPR (Z-GPR)	Range-GPR (R-GPR)
<b>R</b>	0.80	0.81	0.82	0.74	0.72	0.71
<b>RMSE (m)</b>	0.234	0.200	0.147	0.219	0.226	0.229
<b>Time (second)</b>	2.83	2.79	2.66	3.53	4.14	4.33

Note: The values marked in blue represent the best values in the row whereas the values marked in red represent the worst values.

required by all the three methods when it is compiled in a single script.

On comparing, we found that the time taken by all the three methods is significantly lower than the time taken by the modified CS algorithm. Further, method III taken the least time followed by method II and method I respectively.

Various other studies have been carried out to improve the localisation accuracy based on Adaptive Neural Fuzzy Inference System (ANFIS) [44] with a Mean Absolute Error (MAE) of 0.283 m and backpropagation based artificial neural network (BP-ANN) model [45] with a mean localisation error of 0.921 m. Both these studies have reported a high localisation accuracy. In this study, we have reported a minimal RMSE of 0.15m. However, to ensure a fair evaluation of the proposed methods, we need to compare the results of SVR with other regression-based machine learning model. We have selected Gaussian Process Regression (GPR) for comparison because it is widely used, robust and accurate model [46], [47]. In doing so, we have compared the obtained results with the corresponding variants of GPR. The three corresponding GPR variants are Scaling GPR (S-GPR), Z-score GPR (Z-GPR) and Range GPR (R-GPR) as illustrated in Table 3. We have used R, RSME and computational time for comparing the results of all the methods. In doing so, we found that the method III is the most effective method among all the methods.

Although the proposed methods perform better than the corresponding variant of the GPR, the SVR based methods are susceptible to under-performance when dealing with noisy data. In such scenarios, GPR is more likely to perform better [48]. Also, the performance of the proposed methods depends on the choice of the kernel and features.

## VII. CONCLUSION

In this article, we presented and investigated three SVR based machine learning model for ALE prediction. These methods are defined based on the standardisation method used. In the method I, II and III, we have used scaling, Z-score and range standardisation methods respectively. Afterwards, we trained the SVR model with the polynomial kernel using the standardised data and evaluated its performance using correlation of coefficient and RMSE metrics. In doing so, we found that range standardisation (using Eq.(12)) of the features (*i.e.*, method III) results in lower RMSE in ALE prediction. Also, the coefficient of correlation is highest in method III.

Further, we have also compared the performance of all the three models in terms of the computation time requirement.

Again, method III performs better than the other two methods. It requires less time than the other two methods. Hence, method III can be used for ALE prediction during network set-up process to cut down the time requirements.

## ACKNOWLEDGMENT

The authors would like to acknowledge IISER, Bhopal; Gautam Buddha University, Greater Noida; IIT Kharagpur; Fu Jen Catholic University, Taiwan; and Asia University, Taiwan, for providing institutional support. They would like to thank to the editor and all the anonymous reviewers for providing helpful comments and suggestions.

## CODE AVAILABILITY

The code for this work will be made available on a reasonable request to the corresponding authors.

## REFERENCES

- [1] I. Khan, F. Belqasmi, R. Glioth, N. Crespi, M. Morrow, and P. Polakos, "Wireless sensor network virtualization: A survey," *IEEE Commun. Surveys Tuts.*, vol. 18, no. 1, pp. 553–576, 1st Quart., 2016.
- [2] M. Jouhari, K. Ibrahim, H. Tembine, and J. Ben-Othman, "Underwater wireless sensor networks: A survey on enabling technologies, localization protocols, and Internet of underwater things," *IEEE Access*, vol. 7, pp. 96879–96899, 2019.
- [3] H. Xiong and M. L. Sichitiu, "A lightweight localization solution for small, low resources WSNs," *J. Sensor Actuator Netw.*, vol. 8, no. 2, p. 26, May 2019.
- [4] J. Zheng and A. Dehghani, "Range-free localization in wireless sensor networks with neural network ensembles," *J. Sensor Actuator Netw.*, vol. 1, no. 3, pp. 254–271, Nov. 2012.
- [5] A. Singh, S. Sharma, J. Singh, and R. Kumar, "Mathematical modelling for reducing the sensing of redundant information in WSNs based on biologically inspired techniques," *J. Intell. Fuzzy Syst.*, vol. 37, no. 5, pp. 6829–6839, Nov. 2019.
- [6] J. Amutha, S. Sharma, and J. Nagar, "WSN strategies based on sensors, deployment, sensing models, coverage and energy efficiency: Review, approaches and open issues," *Wireless Pers. Commun.*, vol. 111, no. 2, pp. 1089–1115, Mar. 2020.
- [7] M. Khelifi, S. Moussaoui, S. Silmi, and I. Benyahia, "Localisation algorithms for wireless sensor networks: A review," *Int. J. Sensor Netw.*, vol. 19, no. 2, pp. 114–129, 2015.
- [8] P. Tarrío, A. M. Bernardos, and J. R. Casar, "Weighted least squares techniques for improved received signal strength based localization," *Sensors*, vol. 11, no. 9, pp. 8569–8592, Sep. 2011.
- [9] K. Whitehouse, "The design of calamari: An ad-hoc localization system for sensor networks," Ph.D. dissertation, Univ. California Berkeley, Berkeley, CA, USA, 2002.
- [10] C.-Y. Wen and F.-K. Chan, "Adaptive AOA-aided TOA self-positioning for mobile wireless sensor networks," *Sensors*, vol. 10, no. 11, pp. 9742–9770, Nov. 2010.
- [11] D. Niculescu and B. Nath, "Ad hoc positioning system (APS)," in *Proc. IEEE Global Telecommun. Conf.*, vol. 5, Nov. 2001, pp. 2926–2931.
- [12] N. Bulusu, J. Heidemann, and D. Estrin, "GPS-less low-cost outdoor localization for very small devices," *IEEE Pers. Commun.*, vol. 7, no. 5, pp. 28–34, Oct. 2000.
- [13] A. E. Waadt, C. Kocks, S. Wang, G. H. Bruck, and P. Jung, "Maximum likelihood localization estimation based on received signal strength," in *Proc. 3rd Int. Symp. Appl. Sci. Biomed. Commun. Technol. (ISABEL)*, Nov. 2010, pp. 1–5.

- [14] A. Coluccia and F. Ricciato, "RSS-based localization via Bayesian ranging and iterative least squares positioning," *IEEE Commun. Lett.*, vol. 18, no. 5, pp. 873–876, May 2014.
- [15] A. Coluccia and A. Fascista, "Hybrid TOA/RSS range-based localization with self-calibration in asynchronous wireless networks," *J. Sensor Actuator Netw.*, vol. 8, no. 2, p. 31, May 2019.
- [16] V. R. Kulkarni, V. Desai, and R. V. Kulkarni, "A comparative investigation of deterministic and Metaheuristic algorithms for node localization in wireless sensor networks," *Wireless Netw.*, vol. 25, no. 5, pp. 2789–2803, Jul. 2019.
- [17] A. Gopakumar and L. Jacob, "Localization in wireless sensor networks using particle swarm optimization," in *Proc. IET Conf. Wireless, Mobile Multimedia Netw.*, 2008, pp. 227–230.
- [18] J. Kennedy and R. Eberhart, "Particle swarm optimization," in *Proc. IEEE ICNN*, vol. 4, Nov./Dec. 1995, pp. 1942–1948.
- [19] S. Goyal and M. S. Patterh, "Wireless sensor network localization based on cuckoo search algorithm," *Wireless Pers. Commun.*, vol. 79, no. 1, pp. 223–234, Nov. 2014.
- [20] J. Cheng and L. Xia, "An effective cuckoo search algorithm for node localization in wireless sensor network," *Sensors*, vol. 16, no. 9, p. 1390, Aug. 2016.
- [21] M. R. Morelande, B. Moran, and M. Brazil, "Bayesian node localisation in wireless sensor networks," in *Proc. IEEE Int. Conf. Acoust., Speech Signal Process.*, Mar. 2008, pp. 2545–2548.
- [22] C. Musso, N. Oudjane, and F. Le Gland, "Improving regularised particle filters," in *Sequential Monte Carlo Methods in Practice*. Cham, Switzerland: Springer, 2001, pp. 247–271.
- [23] S. Gharghan, R. Nordin, and M. Ismail, "A wireless sensor network with soft computing localization techniques for track cycling applications," *Sensors*, vol. 16, no. 8, p. 1043, Aug. 2016.
- [24] H. Ahmadi and R. Bouallegue, "Exploiting machine learning strategies and RSSI for localization in wireless sensor networks: A survey," in *Proc. 13th Int. Wireless Commun. Mobile Comput. Conf. (IWCMC)*, Jun. 2017, pp. 1150–1154.
- [25] M. A. Bhatti, R. Riaz, S. S. Rizvi, S. Shokat, F. Riaz, and S. J. Kwon, "Outlier detection in indoor localization and Internet of Things (IoT) using machine learning," *J. Commun. Netw.*, vol. 22, no. 3, pp. 236–243, Jun. 2020.
- [26] L. Wang, M. J. Er, and S. Zhang, "A kernel extreme learning machines algorithm for node localization in wireless sensor networks," *IEEE Commun. Lett.*, vol. 24, no. 7, pp. 1433–1436, Jul. 2020.
- [27] S. Kurt and B. Tavli, "Path-loss modeling for wireless sensor networks: A review of models and comparative evaluations," *IEEE Antennas Propag. Mag.*, vol. 59, no. 1, pp. 18–37, Feb. 2017.
- [28] G. Mao, B. D. O. Anderson, and B. Fidan, "Path loss exponent estimation for wireless sensor network localization," *Comput. Netw.*, vol. 51, no. 10, pp. 2467–2483, Jul. 2007.
- [29] T. Yadav and P. P. Bhattacharya, "Signal strength and system operating margin estimation for vehicular ad-hoc networks in Rayleigh fading environment," *Int. J. Comput. Sci. Mobile Comput.*, vol. 2, no. 3, pp. 41–45, 2013.
- [30] A. Palaios, Y. Labou, and P. Mahonen, "A study on the forest radio propagation characteristics in European mixed forest environment," in *Proc. IEEE Mil. Commun. Conf.*, Oct. 2014, pp. 376–381.
- [31] Y.-R. Tsai, "Sensing coverage for randomly distributed wireless sensor networks in shadowed environments," *IEEE Trans. Veh. Technol.*, vol. 57, no. 1, pp. 556–564, Jan. 2008.
- [32] M. Aziz, M.-H. Tayarani-N, and M. R. Meybodi, "A two-objective memetic approach for the node localization problem in wireless sensor networks," *Genetic Program. Evolvable Mach.*, vol. 17, no. 4, pp. 321–358, Dec. 2016.
- [33] D. Praveen Kumar, T. Amgoth, and C. S. R. Annavarapu, "Machine learning algorithms for wireless sensor networks: A survey," *Inf. Fusion*, vol. 49, pp. 1–25, Sep. 2019.
- [34] J. Jebadurai and J. D. Peter, "SK-SVR: Sigmoid kernel support vector regression based in-scale single image super-resolution," *Pattern Recognit. Lett.*, vol. 94, pp. 144–153, Jul. 2017.
- [35] K. S. Ni and T. Q. Nguyen, "Image superresolution using support vector regression," *IEEE Trans. Image Process.*, vol. 16, no. 6, pp. 1596–1610, Jun. 2007.
- [36] X. Xiao, T. Zhang, X. Zhong, W. Shao, and X. Li, "Support vector regression snow-depth retrieval algorithm using passive microwave remote sensing data," *Remote Sens. Environ.*, vol. 210, pp. 48–64, Jun. 2018.
- [37] Y. Peng, P. H. M. Albuquerque, J. M. Camboim de Sá, A. J. A. Padula, and M. R. Montenegro, "The best of two worlds: Forecasting high frequency volatility for cryptocurrencies and traditional currencies with support vector regression," *Expert Syst. Appl.*, vol. 97, pp. 177–192, May 2018.
- [38] M. Awad and R. Khanna, "Support vector regression," in *Efficient Learning Machines*. Cham, Switzerland: Springer, 2015, pp. 67–80.
- [39] C. A. Callejas Pastor, I.-Y. Jung, S. Seo, S. B. Kwon, Y. Ku, and J. Choi, "Two-dimensional image-based screening tool for infants with positional cranial deformities: A machine learning approach," *Diagnostics*, vol. 10, no. 7, p. 495, Jul. 2020.
- [40] H. Drucker, C. J. Burges, L. Kaufman, A. J. Smola, and V. Vapnik, "Support vector regression machines," in *Proc. Adv. Neural Inf. Process. Syst.*, 1997, pp. 155–161.
- [41] B. Üstün, W. J. Melssen, and L. M. C. Buydens, "Facilitating the application of support vector regression by using a universal pearson VII function based kernel," *Chemometric Intell. Lab. Syst.*, vol. 81, no. 1, pp. 29–40, Mar. 2006.
- [42] F. Abbas, H. Afzaal, A. A. Farooque, and S. Tang, "Crop yield prediction through proximal sensing and machine learning algorithms," *Agronomy*, vol. 10, no. 7, p. 1046, Jul. 2020.
- [43] S. Weng, S. Yu, B. Guo, P. Tang, and D. Liang, "Non-destructive detection of strawberry quality using multi-features of hyperspectral imaging and multivariate methods," *Sensors*, vol. 20, no. 11, p. 3074, May 2020.
- [44] Z. Munadhil, S. K. Gharghan, A. H. Mutlag, A. Al-Naji, and J. Chahl, "Neural network-based Alzheimer's patient localization for wireless sensor network in an indoor environment," *IEEE Access*, vol. 8, pp. 150527–150538, 2020.
- [45] S. K. Gharghan, R. Nordin, A. M. Jawad, H. M. Jawad, and M. Ismail, "Adaptive neural fuzzy inference system for accurate localization of wireless sensor network in outdoor and indoor cycling applications," *IEEE Access*, vol. 6, pp. 38475–38489, 2018.
- [46] T. Østergård, R. L. Jensen, and S. E. Maagaard, "A comparison of six metamodeling techniques applied to building performance simulations," *Appl. Energy*, vol. 211, pp. 89–103, Feb. 2018.
- [47] A. Kamath, R. A. Vargas-Hernández, R. V. Krems, T. Carrington, and S. Manzhos, "Neural networks vs Gaussian process regression for representing potential energy surfaces: A comparative study of fit quality and vibrational spectrum accuracy," *J. Chem. Phys.*, vol. 148, no. 24, Jun. 2018, Art. no. 241702.
- [48] A. McHutchon and C. E. Rasmussen, "Gaussian process training with input noise," in *Proc. Adv. Neural Inf. Process. Syst.*, 2011, pp. 1341–1349.



**ABHILASH SINGH** (Member, IEEE) received the integrated dual (B.Tech. and M.Tech.) degree in electronics and communication engineering with specialization in wireless communication and networks from Gautam Buddha University, Greater Noida, India, in 2017. He is currently pursuing the Ph.D. degree in the field of remote sensing with the Indian Institute of Science Education and Research at Bhopal, Bhopal, India.

Since 2018, he has been working on the NASA-ISRO Synthetic Aperture Radar (NISAR) Project at IISER Bhopal. He has been publishing research papers in peer-reviewed conferences and internationally reputed journals. His current research interests include microwave remote sensing, machine learning, bio-inspired algorithms, wireless sensor networks, and wireless communication.

Mr. Singh is a member of the European Geophysical Union (EGU), ISPRS, and the Indian Radio Science Society (InRaSS). He was a recipient of the Gold Medal Awards from the University for being throughout the First Rank Holder in his UG and PG. He received the prestigious "DST-INSPIRE" Fellowship to carried out his Ph.D. degree from the Department of Science and Technology (DST), Ministry of Science and Technology, India. He also received the DAAD Fellowship to attend a Summer School, in 2019.



**VAIBHAV KOTIYAL** was born in New Delhi, India, in 1998. He received the integrated dual (B.Tech. and M.Tech.) degree in electronics and communication engineering with specialization in wireless communication and networks from Gautam Buddha University, Greater Noida, India, in 2020.

He ranked third in the University in the course. He is currently working as a Junior Research Fellow (JRF) with the Department of Industrial and

Management Engineering, IIT Kanpur, India. His research area during his M.Tech. degree was on node localization in wireless sensor networks (WSNs). He trained with Airports Authority of India (AAI) in his summer training period, learning about various equipment used by the organization to ensure navigation to the air-crafts all over the Indian airspace. His current research interests include machine vision, the IoT, and machine learning application to wireless sensor networks.



**SANDEEP SHARMA** received the B.Tech. degree in electronics engineering from RGPV, Bhopal, India, in 1997, the M.Tech. degree in digital communication from Devi Ahilya University, Indore, India, in 2005, and the Ph.D. degree in electronics and communication engineering from Gautam Buddha University, Greater Noida, India, in 2016.

Since 2010, he has been working as a Faculty Member with the Electronics and Communication Engineering Department, School of ICT, Gautam

Buddha University. He has published 22 research articles in reputed international journals and more than 41 papers published in the international conferences. His research interests include wireless sensor networks, wireless network security, physical layer authentication, intrusion detection in wireless networks, cross-layer design, and machine learning applications in WSNs.

Mr. Sharma was a recipient of the Best Conference Paper in the international conference ICCCS, in 2016, and the Young Scientist Award in 2019 for his research work. He is an Active Reviewer of *IET Communications*, *IEEE WIRELESS COMMUNICATIONS LETTERS*, *Journal of Information Technology* (Springer), *Personal and Ubiquitous Computing* (Springer), *Multimedia Tools and Applications* (Springer), *International Journal of Computer Applications in Technology* (Inderscience), *International Journal of Communication Systems* (Wiley), *Journal of The Institution of Engineers (India): Series B*, and the *Journal of Intelligent and Fuzzy Systems*.



**JAIPRAKASH NAGAR** (Member, IEEE) was born in Nagla Vasdev, Mathura, Uttar Pradesh, India, in 1991. He received the integrated B.Tech. (electronics and communication engineering) and M.Tech. (wireless communication and networks) degree from Gautam Buddha University, Greater Noida, India, in 2015. He is currently pursuing the Ph.D. degree with the Subir Chowdhury School of Quality and Reliability, IIT Kharagpur, India.

He has published six research articles in reputed SCI/Scopus indexed journals and international conferences (IEEE/Springer/Taylor and Francis). His current research interests include analytical modeling of wireless multihop networks, the Internet of Things (IoTs), machine learning techniques for the IoTs, and block-chain implementation for real life applications.



**CHENG-CHI LEE** (Member, IEEE) received the Ph.D. degree in computer science from National Chung Hsing University (NCHU), Taiwan, in 2007. He is currently a Distinguished Professor with the Department of Library and Information Science, Fu Jen Catholic University. His current research interests include data security, cryptography, network security, mobile communications and computing, and wireless communications. He has published more than 200 articles

on the above research fields in international journals. He is a member of the Chinese Cryptology and Information Security Association (CCISA), the Library Association of The Republic of China, and the ROC Phi Tau Phi Scholastic Honor Society. He has also served as a Reviewer for many SCI-index journals, other journals, and other conferences. He is also an Editorial Board Member of some journals.

...