

Received July 7, 2020, accepted July 7, 2020, date of current version July 23, 2020.

Digital Object Identifier 10.1109/ACCESS.2020.3008310

## COMMENTS AND CORRECTIONS

# Corrections to “Molecular Property Prediction Based on a Multichannel Substructure Graph”

SHUANG WANG, ZHEN LI, SHUGANG ZHANG, MINGJIAN JIANG, XIAOFENG WANG, AND ZHIQIANG WEI

Department of Computer Science and Technology, Ocean University of China, Qingdao 266100, China

Corresponding author: Zhen Li (lizhen0130@gmail.com)

In the above article [1], there are two errors in Figures 8 and 19. The error of Figure 8 was caused by incorrectly referencing the same figure as Figure 9.

In addition, the label index of BBBP in Figure 19 should be (a) instead of (b). The correct figures are given below. We apologize for these mistakes.

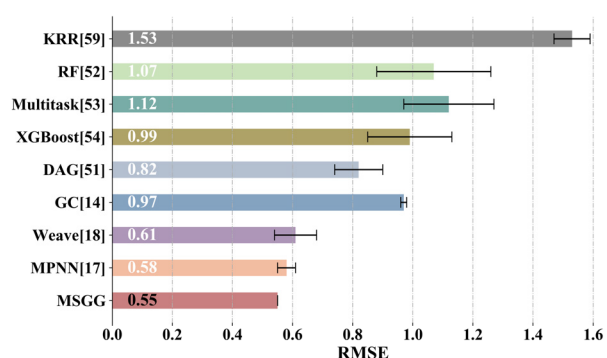


FIGURE 8. Performance of the different algorithms on ESOL.

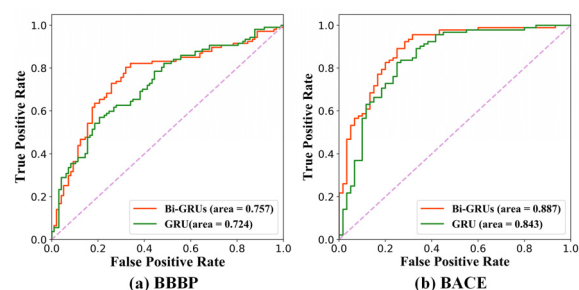


FIGURE 19. The comparison of the GRU and Bi-GRUs on the classification task on (a) BBBP dataset and (b) BACE dataset.

## REFERENCES

- [1] S. Wang, Z. Li, S. Zhang, M. Jiang, X. Wang, and Z. Wei, “Molecular property prediction based on a multichannel substructure graph,” *IEEE Access*, vol. 8, pp. 18601–18614, 2020.