

Received March 30, 2020, accepted April 21, 2020, date of publication April 28, 2020, date of current version May 19, 2020.

Digital Object Identifier 10.1109/ACCESS.2020.2991117

Influence of Sheds Damage on the AC Pollution Flashover Performance of Different Voltage Class Composite Insulators

LU MING¹, LI YANGYANG², AND HU JIANLIN³, (Member, IEEE)

¹State Grid Key Laboratory of Power Transmission Line Galloping Prevention and Control Technology, State Grid Henan Electric Power Research Institute, Zhengzhou 450052, China

²Zhenjiang Power Supply Company, State Grid Jiangsu Electric Power Co., Ltd., Zhenjiang 212000, China

³State Key Laboratory of Power Transmission Equipment and System Security and New Technology, School of Electrical Engineering, Chongqing University, Chongqing 400030, China

Corresponding author: Li Yangyang (673248317@qq.com)

This work was supported in part by the Central Plains Science and Technology Innovation Leading Talent, China, under Grant 194200510024, and in part by the Sci-Tech Project of State Grid Henan Electric Power Company, China, under Grant 52170219000K.

ABSTRACT The damage of high-voltage terminal shed of composite insulators can influence the flashover performance of the insulators. The study was carried out experimentally to investigate the flashover characteristics of composite insulators with sheds damage at different voltage levels. The results show that sheds damage would decrease pollution flashover voltage, creepage distance flashover voltage gradient E_L and the dry arc distance flashover voltage gradient E_H , and such decrease range was proportional to damage degree. Besides, with the increase of composite insulator's dry arc distance, effects of sheds damage on pollution flashover voltage, creepage distance flashover voltage gradient E_L and the dry arc distance flashover voltage gradient E_H were gradually decreasing. With the $ESDD$ ranging from 0.1 mg/cm to 0.3 mg/cm², AC pollution flashover voltage of 35 kV, 110 kV and 220 kV composite insulators decreased by up to 35.92%, 15.03%, 9.11% respectively; the creepage distance flashover voltage gradient E_L decreased by up to 19.15%, 6.05%, 1.34% respectively; the dry arc distance flashover voltage gradient E_H decreased by up to 35.92%, 15.03%, 9.11% respectively.

INDEX TERMS Composite insulator, sheds damage, pollution flashover characteristics.

I. INTRODUCTION

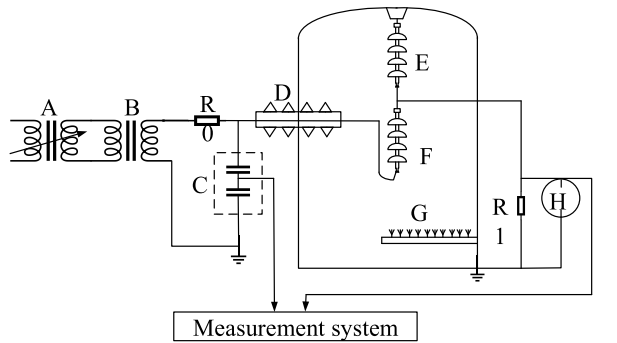
Composite insulators, which are extensively used in the power grid, have played an important role in reducing the pollution flashover accidents of power transmission and transformation equipment and ensuring the safety and reliability of the power grid [1]–[3].

In recent years, with the increase of environmental awareness and protection, the number of birds has increased dramatically, and the transmission line fault caused by bird activities has risen sharply. The bird-related fault has become the third largest fault only second to lightning stroke and external force damage, and the most dangerous type of bird-related fault has some relevance with birds' pecking composite insulators' sheds [4]–[7]. In Luoyang, Xinxiang and other areas of Henan Province, China, there have been

many incidents of bird pecking composite insulator. According to statistics, the number of line trips caused by bird pecking composite insulator accounts for about 10% of the total line trips. [8].

Composite insulator sheds damage caused by birds pecking will not only reduce the creepage distance, but also cause electric field distortion [9] which will subsequently aggravate the uneven potential distribution and affect the pollution flashover characteristics of insulators as a result [10]. Up to now, the research on the pollution flashover characteristics of composite insulator at home and abroad mainly focuses on the effect of pollution types, pollution degree, wetting mode, shed profiles, altitude, temperature, hydrophobicity, etc. [11]–[19] on pollution flashover voltage and flashover process, while it has not been further studied and compared that the influence of sheds damage caused by bird pecking on the pollution flashover characteristics of composite insulators at different voltage levels. This paper aims to study the effect

The associate editor coordinating the review of this manuscript and approving it for publication was Boxue Du ^{ID}.



A: Voltage regulator B: Transformer C: Divider D: High-voltage wall bushing R0: Protective resistor E: Insulation protection F: Sample G: Steam R1: Shunt resistor H: Protective discharge tube

FIGURE 1. The schematic diagram of test set up.

of bird peck sheds damage on pollution flashover characteristics of composite insulators at different voltage levels by using 35kV, 110kV and 220kV composite insulators as test samples.

II. TEST DEVICES AND SAMPLES

A. TEXT DEVICES

The experiments were performed in a large multi-functional artificial climate chamber where located in the State Key Laboratory of Power Transmission Equipment & System Security and New Technology. The voltage was applied by a 500kV/2000kVA test transformer with the rated current of 4A, maximum short-circuit current of 75A and short circuit impedance of less than 6%. Test wiring is shown in Figure 1.

A: Voltage regulator B: Transformer C: Divider D: High-voltage wall bushing R0: Protective resistor E: Insulation protection F: Sample G: Steam R1: Shunt resistor H: Protective discharge tube

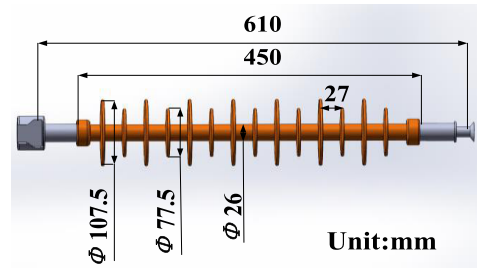
B. TEXT SAMPLES

Select FXBW-35/70, FXBW4-110/120 and FXBW4-220/100 composite insulators of high voltage transmission lines as the test samples, and the shed profiles are shown in Figure 2. The minimum nominal creepage distances of 35kV, 110kV and 220kV composite insulators are 1280mm, 3600mm and 6600mm respectively. JYH250-type grading ring is installed at the high voltage side of FXBW4-110/120 insulator; JYH305-type grading ring is installed at the high voltage side of FXBW4-220/100 insulator and JYH250-type grading ring is installed at the low voltage side. The parameters of the grading ring are shown in Table 1, and Figure 3 is its diagram. The ring diameter, fitting diameter, height of the joint, and pipe diameter of grading ring are represented as ΦD , Φd , ΔH , R respectively.

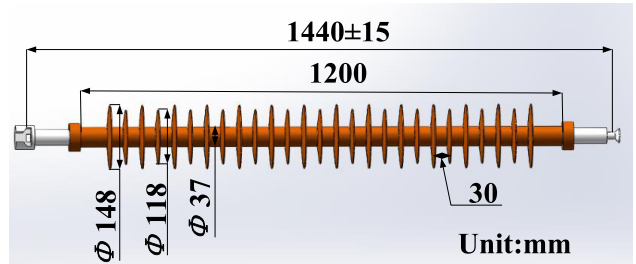
III. MATH INVESTIGATION, CHARACTERISTICS, SIMULATION AND TEST METHODS OF SHEDS DAMAGE

A. INVESTIGATION OF SHEDS DAMAGE

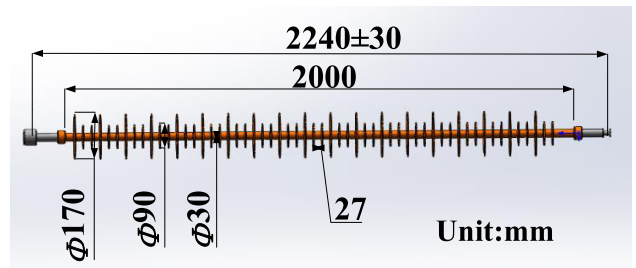
In this paper, 557 pieces of composite insulators pecked by birds were randomly sampled in Henan Province,



(a) FXBW-35/70



(b) FXBW4-110/120



(c) FXBW4-220/100

FIGURE 2. The profile of the tested short samples.

TABLE 1. Parameters of grading rings.

Model	ΦD (mm)	Φd (mm)	ΔH (mm)	R (mm)
JYH250	250	36	70	15
JYH305	305	36	100	20

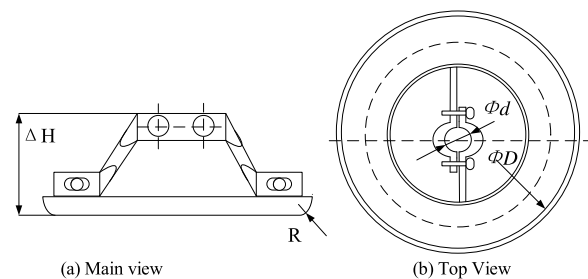


FIGURE 3. The diagram of grading rings.

China. According to analysis based on statistical data above, the sheds damage caused by bird pecking accounted for 48.47% of the total number of bird-related damage.



FIGURE 4. Damage shape.

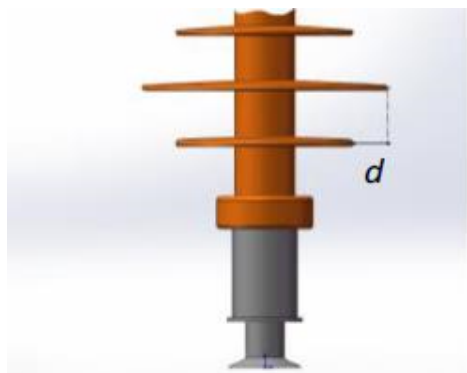


FIGURE 5. Distance of sheds.

B. CHARACTERISTICS OF SHEDS DAMAGE

1) POSITION FEATURES

Statistics show that the composite insulator sheds damage is mainly in 1~2 group sheds at the high voltage side, because the birds generally stand to peck at the connection part of the fittings or grading rings on the high voltage side.

2) SHAPE FEATURES

It is found that more than 80% of the shed damage caused by bird pecking are approximately circular, as shown in Figure 4. The reason is that birds generally swivel their beak and move to pick objects.

3) DEGREE FEATURES

Based on the defect area, the damage degree of the shed caused by bird pecking was analyzed. The results show that the maximum damage area of shed caused by bird pecking on a 110kV line is about 12% of the area of a healthy shed. For insulators with large and small sheds, when the damage degree of large shed exceeds the gap distance between two neighboring sheds as shown in Figure 5, the small shed will also be pecked by birds. The damage area and shape of the small shed can be approximately equivalent to the projection of the large damage shed on the small shed.

C. SHEDS DAMAGE SIMULATION

1) ARTIFICIAL SIMULATION METHOD

According to the analysis of the position and shape features of sheds, we selected 2 group of sheds on the high voltage side and the arc-shaped area to simulate defect artificially.

TABLE 2. Simulation parameters.

Insulator type	Damage area (%)	Damage radius from the edge of large shed (mm)	Reduced creepage distance (mm)
FXBW-35/70	6%	20.8	106.4
	12%	28.0	164.0
	25% (Rod)	40.7	265.6
FXBW4-110/120	6%	28.7	169.6
	12%	39.2	253.6
	25% (Rod)	50.5	344.0
FXBW4-220/100	6%	37.5	150.0
	12%	50.0	280.0
	28% (Rod)	70.0	520.0

In order to simplify the test, the damage degree of the first two groups of the high voltage side of insulators was set to be consistent.

2) DAMAGE PARAMETER SETTING UP

In this paper, 6% and 12% of the damage area were selected for research, and the case of the shed damage to the rod was also considered. For the 35kV, 110kV, 220kV composite insulator, when the damage reached the rod, the corresponding damage area was about 25%, 25%, 28% respectively. The simulation parameters are shown in Table 2, and the damage simulation diagram is shown in Figure 6.

D. TEST METHOD AND PROCEDURES

The test samples were made using the artificial simulation method. In addition, the artificial pollution tests were carried out based on the method recommended by IEC60507 and the whole test procedure is presented as follows.

1) POLLUTION PRETREATMENT

Before tests, all samples were carefully cleaned to ensure the removal of all traces of dirt and grease and then dried naturally. The surfaces of the samples were coated with a very thin layer of dry kieselguhr to destroy the hydrophobicity at the degree of WC4 or WC5. Because the layer of kieselguhr was very thin, the effect of the kieselguhr on non-soluble deposit density *NSDD* could be ignored.

2) ARTIFICIAL POLLUTING

The solid layer method was used to form the pollution layer on the samples, following the procedures prescribed in standard IEC 60507. Kieselguhr is used as inert materials, and industrial pure sodium chloride is used as conductive material, the ratio of non-soluble deposit density *NSDD* to equivalent soluble deposit density *ESDD* is 6:1. The ratio of pollution on upper and lower sheds surface of the insulator is 1:1.

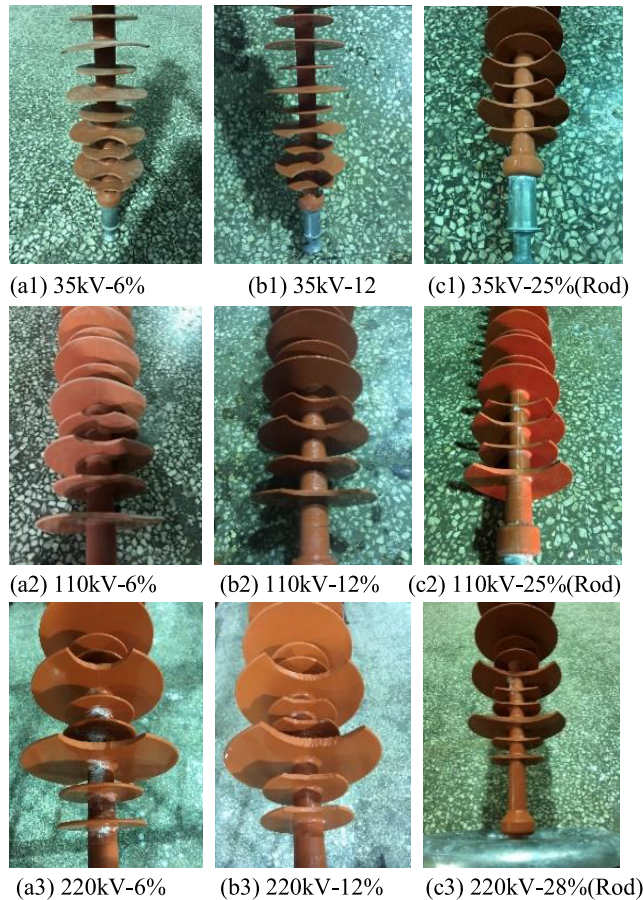


FIGURE 6. Diagram of sheds damage of 35kV, 110kV, 220kV composite insulators.

3) WET TREATMENT OF TEST SAMPLE

The steam fog is applied to wet the pollution layer with the output rate of $0.06 \pm 0.01 \text{ kg/h.m}^3$. The spray direction of the fog is perpendicular to the axis direction of the insulator string.

4) FLASHOVER TEST

The flashover tests were carried out on three identical samples by rise-voltage method, with an interval of 5 minutes. Among the four flashover values of each sample, the lowest three flashover voltage values were taken. That is, the average value of nine flashover voltages of three samples was taken as the flashover voltage U_f .

IV. TEST RESULTS AND ANALYSIS

A. INFLUENCE OF SHEDS DAMAGE ON AC POLLUTION FLASHOVER VOLTAGE

In this paper, under the condition of $ESDD$ of 0.1, 0.15, 0.2 and 0.3 mg/cm^2 , the artificial AC pollution flashover characteristics of 35kV, 110kV and 220kV composite insulators with three kinds of damage (damage area of 6%, damage area of 12% and damage to root) were tested. The results of pollution flashover voltage test are shown in U_f in Table 3.

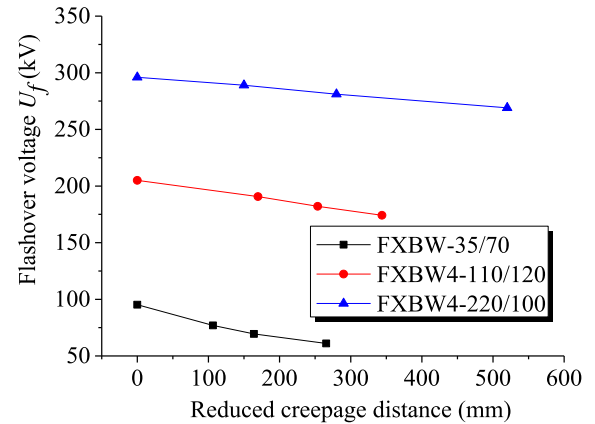


FIGURE 7. AC pollution flashover voltage of 35kV, 110kV, 220kV composite insulators ($ESDD=0.1 \text{ mg/cm}^2$).

Due to the influence of the creepage distance on the pollution flashover voltage, the damage area is converted into the reduced creepage distance for analyzing the influence of the damage degree on the pollution flashover voltage. Take the change of the flashover voltage of the 35kV, 110kV, and 220kV composite insulators with the $ESDD$ of 0.1 mg/cm^2 as an example, shown in Figure 7.

It can be seen from Figure 7 that the shed damage results in the decrease of pollution flashover voltage of composite insulators. With the increase of damage degree, the decreasing range of pollution flashover voltage increases. The reason is that the reduced creepage distance increases with the increase of damage degree, and the pollution flashover voltage is positively related to the creepage distance by the Obenaus pollution flashover model theory. For example, for 110kV composite insulators, the reduced creepage distance under the condition of three damage degrees are 169.6mm, 253.6mm and 344.0mm respectively.

With the increase of insulator voltage level and dry arc distance, the influence of damage degree on flashover voltage gradually weakens. For example, when the $ESDD$ is 0.1 mg/cm^2 , the AC pollution flashover voltage of 35kV, 110kV and 220kV composite insulators with 12% damage area will be reduced by 27.02%, 11.17% and 5.03% respectively compared with those in the intact condition. The reason is that with the increase of the dry arc distance, the decreasing proportion of the composite insulator's creepage distance to dry arc distance ratio L/H decreases. For example, for a composite insulator at three voltage levels of 35kV, 110kV, and 220kV, L/H is reduced by 12.81%, 7.04%, and 4.24% respectively, when the damage area is 12%.

B. INFLUENCE OF SHEDS DAMAGE ON AC POLLUTION FLASHOVER VOLTAGE GRADIENT

The flashover voltage of insulator is related to the creepage distance L and the dry arc distance H . In this paper, the creepage distance flashover voltage gradient E_L and the dry arc distance flashover voltage gradient E_H are selected respectively to analyze the influence of the sheds damage on

TABLE 3. AC pollution flashover voltage U_f , creepage distance flashover voltage gradient E_L and dry arc distance flashover voltage gradient E_H of 35kV, 110kV, 220kV composite insulators($\sigma = 1.00\% \sim 7.89\%$).

Voltage level	Damage area (%)	Reduced distance (mm)	Contamination degree $ESDD$ (mg/cm ²)											
			0.1			0.15			0.20			0.30		
			U_f	E_L	E_H	U_f	E_L	E_H	U_f	E_L	E_H	U_f	E_L	E_H
			kV	kV/cm	kV/cm	kV	kV/cm	kV/cm	kV	kV/cm	kV/cm	kV	kV/cm	kV/cm
35kV	0	0	95.2	0.74	2.12	90.8	0.71	2.02	87.1	0.68	1.94	82.2	0.64	1.83
	6%	106.4	77.0	0.66	1.71	72.0	0.61	1.60	69.1	0.59	1.54	65.9	0.56	1.46
	12%	164.0	69.5	0.62	1.54	63.1	0.57	1.40	59.3	0.53	1.32	57.3	0.51	1.27
	25%	265.6	61.0	0.60	1.36	59.0	0.58	1.31	55.7	0.55	1.24	51.6	0.51	1.15
110kV	0	0	205.0	0.57	1.71	171.5	0.48	1.43	155.3	0.43	1.29	135.2	0.38	1.13
	6%	169.6	190.7	0.56	1.59	160.0	0.47	1.33	145.3	0.42	1.21	126.5	0.37	1.05
	12%	253.6	182.1	0.54	1.52	150.2	0.45	1.25	136.9	0.41	1.14	120.9	0.36	1.01
	25%	344.0	174.2	0.54	1.45	143.4	0.44	1.20	130.7	0.40	1.09	115.0	0.35	0.96
220kV	0	0	296.0	0.45	1.48	260.0	0.39	1.30	239.5	0.36	1.20	215.5	0.33	1.08
	6%	150.0	289.0	0.45	1.45	254.0	0.39	1.27	234.1	0.36	1.17	210.2	0.33	1.05
	12%	280.0	281.1	0.45	1.41	248.2	0.39	1.24	228.7	0.36	1.14	204.8	0.32	1.02
	28%	520.0	269.0	0.44	1.35	235.6	0.39	1.18	217.8	0.36	1.09	196.0	0.32	0.98

the pollution flash voltage gradient of the composite insulator. Calculation formula of E_L and E_H is as follows, and the unit of them is kV/cm.

$$E_L = U_f/L \quad (1)$$

$$E_H = U_f/H \quad (2)$$

where L is creepage distance, H is dry arc distance, U_f is pollution flashover voltage.

Based on the values of pollution flashover voltage of 35kV, 110kV and 220kV composite insulators and the creepage distance and dry arc distance of composite insulators with sheds damage, the creepage distance pollution flashover voltage gradient E_L and the dry arc distance flashover voltage gradient E_H can be calculated, as shown in Table 3.

1) THE INFLUENCE ON E_L

For example, the variation of the 35kV, 110kV, and 220kV composite insulators' E_L with the degree of contamination $ESDD=0.1\text{mg/cm}^2$ is shown in Figure 8.

It can be seen from Figure 8 that sheds damage leads to the decrease of composite insulator's E_L and the extent increases with the increase of damage degree. For example, when $ESDD=0.1\text{mg/cm}^2$ and the creepage distances are 106.4mm, 164.0mm, and 265.6mm, the 35kV composite insulator's E_L are 0.66kV/cm, 0.62kV/cm, and 0.60kV/cm, respectively, which are 0.08kV/cm, 0.12kV/cm, and 0.14kV/cm lower than those in the intact condition respectively. According to the Obenaus pollution flashover model theory, the

pollution flashover voltage is positively related to the creepage distance. Besides, the decrease amplitude of pollution flashover voltage is larger than that of surface creepage distance, and the difference increases gradually with the increase of damage degree. For example, when $ESDD$ is 0.1mg/cm^2 , the pollution flashover voltage of 35kV composite insulators with three degrees of damage decreases by 19.12%, 27.00% and 35.92%, and the creepage distance decreases by 8.31%, 12.81% and 20.75% respectively.

With the increase of insulator voltage level and dry arc distance, the influence of damage degree on E_L gradually weakens. For example, when $ESDD$ is 0.1mg/cm^2 , the E_L of 35kV, 110kV and 220kV composite insulators with damage area of 12% are 0.62kV/cm, 0.54kV/cm and 0.45kV/cm respectively, which are 16.29%, 4.43% and 0.83% lower than those in the intact condition. The reason is that with the increase of insulator voltage level, the composite insulator's L/H decreases.

2) THE INFLUENCE ON E_H

The variation of the 35kV, 110kV, and 220kV composite insulators' E_H with the degree of contamination $ESDD=0.1\text{mg/cm}^2$ is shown in Figure 9.

It can be seen from Figure 9 that sheds damage has an effect on the composite insulator's E_H , and the degree of influence is related to the reduced creepage distance and insulator voltage level. E_H decreases with the increase of damage degree. For example, for 35kV composite insulators,

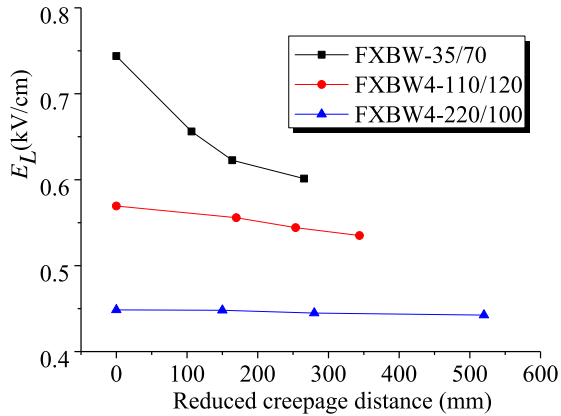


FIGURE 8. The creepage distance flashover voltage gradient E_L of 35kV, 110kV, 220kV composite insulators ($ESDD=0.1\text{mg}/\text{cm}^2$).

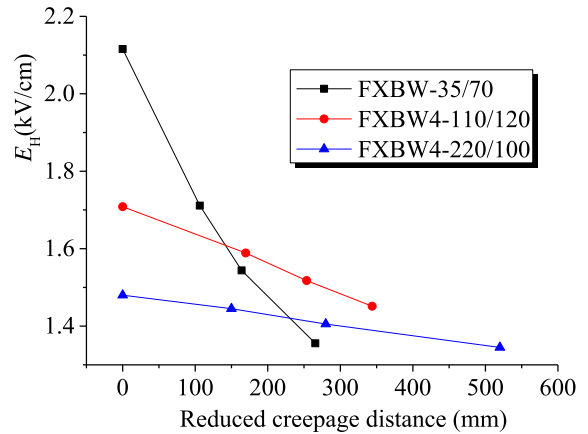


FIGURE 9. The dry arc distance flashover voltage gradient E_H of 35kV, 110kV, 220kV composite insulators ($ESDD=0.1\text{mg}/\text{cm}^2$).

when the $ESDD$ is $0.1\text{mg}/\text{cm}^2$ and E_H at the reduced creepage distance of 106.4mm, 164.0mm, and 265.6mm are 1.71kV/cm, 1.54kV/cm, and 1.36kV/cm respectively. Compared with the intact condition, E_H is reduced by 0.41kV/cm, 0.58kV/cm, and 0.76kV/cm, respectively. The reason is that the reduced creepage distance increases with the increase of damage degree, and the pollution flashover voltage is positively related to the creepage distance by the Obenaus pollution flashover model theory. Therefore, the decrease amplitude of E_H increases due to the increase of pollution flashover voltage's decrease amplitude and the constant value of H .

With the increase of the insulator dry arc distance, the influence of damage degree on E_H gradually weakens. For example, the dry arc distance flashover voltage gradient E_H of the 35kV, 110kV, and 220kV composite insulators with a contamination degree of $ESDD=0.1\text{mg}/\text{cm}^2$ and damage area of 12% are 1.54kV/cm, 1.52kV/cm, and 1.41kV/cm respectively, which are 27.02%, 11.17%, and 5.03% lower than those in the intact condition. The reason is that the creepage height ratio L/H of the composite insulator decreases with the increase of dry arc distance.

V. CONCLUSION

Sheds damage results in the decrease of AC pollution flashover. With the increase of damage degree, the drop amplitude of pollution flashover voltage increases. As the insulator voltage level and dry arc distance increase, the influence on pollution flashover voltage decreases gradually. The contamination degree of $ESDD$ is $0.1\sim 0.3\text{mg}/\text{cm}^2$, the pollution flashover voltages of 35kV, 110kV and 220kV composite insulators decrease by up to 35.92%, 15.03% and 9.11% respectively under the condition of root damage.

The influence of sheds damage on the creepage distance flashover voltage gradient E_L and the dry arc distance flashover voltage gradient E_H of composite insulators is related to reduced creepage distance and voltage level. The E_H and E_L of the low voltage level insulator decreases as the damage degree increases. With the increase of insulator

voltage level and dry arc distance, the influence on the E_L and E_H gradually decreases. When the contamination degree of $ESDD$ is $0.1\sim 0.3\text{mg}/\text{cm}^2$, the E_L of 35kV, 110kV and 220kV composite insulators decrease by 19.15%, 6.05% and 1.34% respectively, and the E_H decreases by 35.92%, 15.03% and 9.11% respectively under the condition of root damage.

REFERENCES

- [1] S. Li, S. Yu, and Y. Feng, "Progress in and prospects for electrical insulating materials," *High Voltage*, vol. 1, no. 3, pp. 122–129, Oct. 2016.
- [2] X. Liang, Y. Gao, J. Wang, and S. Li, "Rapid development of silicone rubber composite insulator in China," *High Voltage Eng.*, vol. 42, no. 9, pp. 2888–2896, 2016.
- [3] Z.-C. Guan, G.-M. Peng, L.-M. Wang, Z.-D. Jia, and R.-B. Zhang, "Application and key technical study of composite insulators," *High Voltage Eng.*, vol. 37, no. 3, pp. 513–519, 2011.
- [4] M. Lu, N. Ma, A. Tu, L. Li, Z. Du, and Q. Zhao, "Analysis on bird damage to composite insulator of high voltage transmission lines in Henan province," *Insulators Surge Arresters*, vol. 5, pp. 1–5, May 2015.
- [5] H. Yi, Y.-J. Xiong, G. Zhou, and H.-W. He, "Analysis on bird-caused damages of overhead transmission lines and countermeasures," *Power Syst. Technol.*, vol. 20, no. 10, pp. 95–100, 2008.
- [6] Z.-S. Sun, Z.-Y. Li, J.-B. Zhang, and M.-X. Fu, "Analysis on bird pest of composite insulators for 1000 kV AC transmission line and its countermeasures," *Power Syst. Technol.*, vol. 10, pp. 52–54, Oct. 2009.
- [7] L. Xuming, P. Chunyu, and X. Kai, "Investigation on bird damage to composite insulators of 500 kV transmission lines," *Power Syst. Technol.*, vol. 29, no. 22, pp. 19–23, 2005.
- [8] L. Changkan, L. Ming, and P. Kai, "Distribution characteristics and classification of bird fault in Henan transmission line," *High Voltage App.*, vol. 52, no. 12, pp. 48–54, 2015.
- [9] Z. He and Z. Haoran, "Potential and electric field simulation study of composite insulators with shed damage conditions," *Insulators Surge Arresters*, vol. 5, pp. 1–6, Oct. 2016.
- [10] H. Jianlin and L. Yangyang, "Influence of sheds damage on the artificial AC pollution flashover performance of 35 kV class composite rod insulator," *High Voltage Eng.*, vol. 45, no. 3, pp. 716–722, 2019.
- [11] X. Jiang, X. Li, D. Zhang, and Z. Zhang, "Effect of soluble contamination on the AC flashover performance of insulator," *High Voltage Eng.*, vol. 41, no. 6, pp. 1915–1920, 2015.
- [12] B. Dong, X. Jiang, J. Hu, L. Shu, and C. Sun, "Effects of artificial polluting methods on AC flashover voltage of composite insulators," *IEEE Trans. Dielectrics Electr. Insul.*, vol. 19, no. 2, pp. 714–722, Apr. 2012.
- [13] H. Qingdan, Z. Dongdong, and S. Haoyong, "Calculation of insulator flashover voltage based on equivalent salt deposit density correction," *High Voltage Eng.*, vol. 42, no. 6, pp. 1907–1913, 2016.

- [14] Z. Linjie, L. Chengrong, and Y. Jisha, "Using a cold fog test method to study contamination flashover performance of composite insulators," *Proc. CSEE*, vol. 27, no. 18, pp. 71–75, 2007.
- [15] F.-Z. Zhang, L.-M. Wang, and Z. Guan, "Influence of parameters for composite insulator on DC flashover voltage," *High Voltage Eng.*, vol. 36, no. 3, pp. 603–608, 2010.
- [16] X. Jiang, Z. Zhang, J. Yuan, Q. Hu, and L. Luo, "Study of AC pollution flashover performance of porcelain insulators at high altitude sites of 2800~4500 m," *IEEE Trans. Power Del.*, vol. 24, no. 3, pp. 1426–1432, Jul. 2009.
- [17] Z. Zhang, X. Jiang, Y. Chao, C. Sun, and J. Hu, "Influence of low atmospheric pressure on AC pollution flashover performance of various types of insulators," *IEEE Trans. Dielectrics Electr. Insul.*, vol. 17, no. 2, pp. 425–433, Apr. 2010.
- [18] I. Gutman and A. Dernfalk, "Pollution tests for polymeric insulators made of hydrophobicity transfer materials," *IEEE Trans. Dielectrics Electr. Insul.*, vol. 17, no. 2, pp. 384–393, Apr. 2010.
- [19] A. Sun, J. Zhuang, and C. Huo, "Formation mechanism of streamer discharges in liquids: A review," *High Voltage*, vol. 1, no. 2, pp. 74–80, Jul. 2016.



LU MING was born in Henan, China, in 1975. He received the B.S. degree in high voltage technology from the Central China University of Science and Engineering, Wuhan, China, in 1998. He has been a Professor Level Senior Engineer and the Technical Leader of the State Grid Key Laboratory of Power Transmission Line Galloping Prevention and Control Technology, Technology Research Team, State Grid Henan Electric Power Research Institute, State Grid Corporation of China, the Professional Leader of State Grid Corporation of China, a member of the Line Operation Sub Technical Committee of National Overhead Line Standardization Technical Committee, a member of the Enterprise Standard Committee of State Grid Corporation of China, and a Master's Supervisor of the Shenzhen Graduate School of Tsinghua University and North China Electric Power University. His research interests include anti galloping, pollution flashover, and high voltage external insulation of overhead lines. He supervised this research and revised this article.



LI YANGYANG was born in Anhui, China, in 1992. He received the B.S. and M.S. degrees in electrical engineering from Chongqing University, Chongqing, China, in 2015 and 2018, respectively. His research interest is in high voltage external insulation technology. He wrote the original draft of this article.



HU JIANLIN (Member, IEEE) was born in Hubei, China, in 1978. He received the B.S. and Ph.D. degrees in electrical engineering from Chongqing University, Chongqing, China, in 2001 and 2009, respectively. From September 2013 to September 2014, he was a Visiting Scholar at The University of Manchester, U.K. He has been a Professor and the Vice President of the School of Electrical Engineering, Chongqing University. He has presided over and participated in more than 50 national, provincial, and ministerial level and horizontal research projects, such as major research plans and general projects of the NSFC, national key basic research and development plan (973), national science and technology support plan of the 11th five-year plan, and science and technology plan of the Ministry of Railways. He has published more than 40 academic articles on the IEEE TRANSACTION ON DIELECTRICS AND ELECTRICAL INSULATION, the IEEE TRANSACTION ON POWER DELIVERY, *Applied Surface Science*, the *Chinese Journal of Electrical Engineering*, and other international and domestic journals and international academic conferences. Since July 2003, he has been engaged in the research on the external insulation characteristics of UHV transmission lines and the icing and protection of transmission lines under a special environment (high altitude, pollution, and icing). His doctoral dissertation has been awarded as the National Excellent Doctoral Dissertation. He held five invention patents. His research interest is in high voltage external insulation technology. He helped in experiments and analysis. He is a member of the CIGRE and the Chongqing Institute of Electrical Engineering. He has won one first prize of the National Science and Technology Progress Award, one second prize of the National Science and Technology Progress Award, and three first prizes of provincial and ministerial science and technology progress and one third prize.

• • •