

Received February 4, 2020, accepted February 20, 2020, date of publication February 24, 2020, date of current version March 16, 2020.

Digital Object Identifier 10.1109/ACCESS.2020.2976194

A Smart Bed for Non-Obtrusive Sleep Analysis in Real World Context

MARCO LAURINO¹, LUCIA ARCARISI², NICOLA CARBONARO^{2,3}, ANGELO GEMIGNANI^{4,1},
DANILO MENICUCCI⁴, AND ALESSANDRO TOGNETTI^{2,3}, (Member, IEEE)

¹Institute of Clinical Physiology, National Research Council, 56124 Pisa, Italy

²Department of Information Engineering, University of Pisa, 56122 Pisa, Italy

³Research Center "E. Piaggio," University of Pisa, 56122 Pisa, Italy

⁴Department of Surgical, Medical and Molecular Pathology and Critical Care Medicine, University of Pisa, 56126 Pisa, Italy

Corresponding author: Marco Laurino (laurino@ifc.cnr.it)

This work was supported by the Regione Toscana through the L.A.I.D. Project under Grant POR FESR 2014-2020 - DD3383389/2014 - call 1.

ABSTRACT Sleep disorders are common health problems in industrialized societies and may be caused by underlying health issues. Current methods to assess the quality of sleep are invasive and not suitable for continuous monitoring in real world contexts. We have developed a smart sensing solution for non-invasive sleep monitoring specifically conceived for the early identification of pre-clinical sleep disorders and insomnia in the general population. Our prototype, named the Smart-Bed, is a low-cost solution that gathers and processes data on the movement and position of the subject, physiological signals, and environmental parameters. Our tests on the prototype in controlled lab conditions highlighted that the mattress can reliably detect subject's position/motion, heart rate and breathing activity. It performs well compared to polysomnography and correctly classifies four behavioural conditions (no bed occupancy, wakefulness, non-REM sleep, and REM sleep), which are the basis for creating an objective sleep quality index.

INDEX TERMS Accelerometers, piezoresistive devices, physiology, signal analysis, psychology, sleep monitoring, real world data.

I. INTRODUCTION

Sleep disorders including insomnia are among the most common health problems in industrialized societies [1]. Poor sleep quality increases the probability of incidents and accidents at work or during daily activities [2]. Furthermore, insomnia correlates with high rates of absenteeism from work [2]. Compared to people with good sleep quality, insomniacs visit clinical structures more frequently and use drugs much more. A large amount of data [3]–[7] indicates that chronic insomnia increases vulnerability to mental disorders (depression, anxiety, alcoholism), metabolic diseases (diabetes and dyslipidemia), and cardiovascular diseases (myocardial infarction and hypertension), as well as neurodegenerative disorders (i.e. mild cognitive impairment).

Systematic, preventive, personalized and non-invasive methods for sleep quality assessment are thus of paramount importance. Polysomnography is currently the gold-standard for assessing sleep quality [8], [9], since it estimates the

macrostructure of sleep, i.e. the division of sleep into subsequent stereotypical stages [10]. This macrostructure carries valuable objective information on the quality of sleep, and in fact is corrupted in sleep disorders [11]. Unfortunately, polysomnography is highly invasive. The lack of comfort prevents the subject from sleeping naturally and it does not provide fully reliable measurements of the quality of sleep in real life.

To improve on this situation, within the research project L.A.I.D. (*Linking Automation to artificial Intelligence for revealing sleep Dysfunctions*) [12], we developed a smart sensing solution for non-invasive sleep quality assessment. In the project, we developed a smart mattress (hereinafter called *Smart-Bed*) specifically conceived to assess the quality of sleep to early identify pre-clinical signs of sleep disorders and insomnia in the general population. Our Smart-Bed collects and processes data on the motion and position of the subject, physiological signals (heart rate and breathing rate) and environmental parameters (sound intensity, relative humidity, room temperature and luminosity). The Smart-Bed is based on a single mattress made by

The associate editor coordinating the review of this manuscript and approving it for publication was Mohamad Forouzanfar ¹.

Materassificio Montalese [13] (the group leader of the L.A.I.D. project) in which we integrated a pressure mapping system and a set of tri-axial accelerometers.

Several non-invasive sensor technologies have been developed for in-bed monitoring of biomedical parameters, such as sleeping posture/movements and physiological signals [9], [14]–[24]. However, no previous work has focused on the assessment of sleep quality by comparing it with the standard (i.e. polysomnography).

The existing solutions for non invasive sleep monitoring are based on pressure mapping systems that extract an image of the pressure of the subject lying on the mattress. Contact pressures are measured by multiple pressure sensors, generally with high spatial resolution, using piezoresistive [15], capacitive [18]–[20], optical [21] or piezoelectric [23] technologies. The pressure maps are used to detect the subject's presence, sleeping posture or movements or to identify breathing or cardiac activity. Note that the main current solutions are monomodal and are not able to simultaneously detect the position/movement, breathing and heart rate. The *WhizPAD* pressure mapping system developed by Liu *et al.* [15] detects user movements and breathing activity. Chang *et al.* [19], [20] employed a capacitive matrix for movement and breathing monitoring. The solution by Kortelainen *et al.* [23] records the ballistocardiographic signal and breathing activity during sleep. All the other solutions detect position and movement only. In addition, most current solutions are for hospital locations [15], [18], [21], [25]–[27]. None of the previous works reported the classification of the sleep macrostructure.

In this work, we developed a multimodal sensing system by combining textile-based pressure mapping and tri-axial accelerometers to detect position/movement, breathing activity and heart rate in a non-obtrusive way. As previously noted, the main current solutions are monomodal and, to the best of our knowledge, our Smart-Bed is the only prototype that can simultaneously detect position/movement, breathing and heart rate. In addition, our Smart-Bed is specifically designed as a consumer product for the general population. In fact, we have designed a low cost solution that is still able to detect key clinical parameters. More importantly, our machine learning analysis identifies four behavioural conditions, and differentiates between non-REM and REM phases. We have thus demonstrated the possibility of identifying the main sleep macrostructures. To the best of our knowledge, our mattress is the first of its kind.

We developed the pressure mapping system by using piezoresistive textile technology inspired by [28], with modifications to reduce the cross-talk between pressure sensors. We tested the prototype in controlled lab settings on several groups of subjects. The results demonstrated that the Smart-Bed gives a reliable detection of the subject's position and movements as well as heart rate and breathing activity. In addition, the preliminary assessment performed very promisingly in comparison to polysomnography. In fact, the mattress signals enabled us to

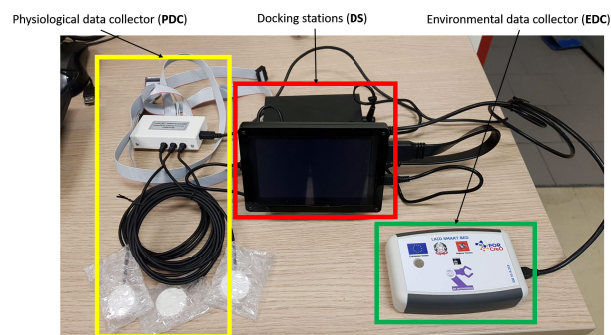


FIGURE 1. Hardware of functional blocks of the Smart-Bed prototype. Docking station (DS) is in the red frame, Physiological data collector (PDC) in the yellow frame and Environmental data collector (EDC) in the green frame.

classify four behavioural conditions that represent the sleep macrostructure.

The results obtained are encouraging and highlight the technical validity of the Smart-Bed. However, an extensive validation phase on a high number of heterogeneous subjects is needed. In fact, we are currently testing a high number of subjects in order to validate the Smart-Bed as a tool for reducing socio-economic costs due to sleep disorders and for increasing individual well-being.

II. MATERIALS AND METHODS

A. OVERALL ARCHITECTURE

The architecture of the Smart-Bed prototype comprises the following functional blocks (see Figure 1):

- Docking station (DS)
- Physiological data collector (PDC)
- Environmental data collector (EDC)

Both the PDC and EDC are wired to DS via USB serial communication interface. The DS is a Microsoft Windows 10 based system with a touchscreen interface. The DS is equipped with tailored software for: i) managing PDC and EDC, ii) processing the signals and parameters from PDC/EDC, iii) storing the collected data, and iv) extracting the sleep and environmental quality indices. The PDC is a custom-designed acquisition unit with two different kinds of sensors: pressure mapping system and three tri-axial accelerometers. The architecture of the sensing components, the PDC and the EDC were designed by IFC-CNR and University of Pisa. The mattress is made of memory foam and is produced by *Materassificio Montalese S.P.A.* (Pistoia, Italy). The PDC was developed by *EB Neuro S.P.A.* (Firenze, Italy), and the EDC and DS by *BP Engineering S.P.A.* (Carrara, Italy).

B. PRESSURE MAPPING SYSTEM

The PDC is equipped with a pressure mapping system based on a piezoresistive textile applied onto the foam layer below the mattress top cover. We designed the pressure mapping system to detect the distribution of pressures when a subject

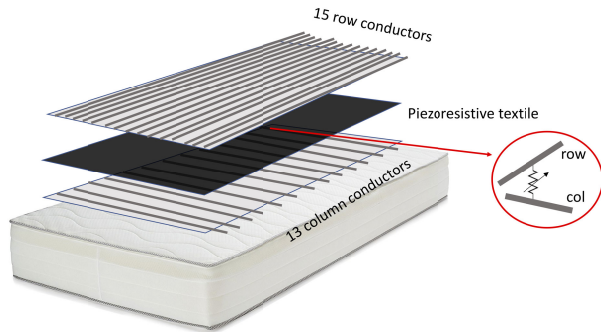


FIGURE 2. Pressure mapping system based on a textile resistive matrix with 13 column conductors and 15 row conductors for a total of 195 sensing areas. A single sensing area is highlighted in the inset.

is lying on the bed. The pressure signals obtained can be used to detect the subject's position and movements and to extract the subject's breathing rate. On the basis of an analysis of the literature and prioritizing low complexity, low cost and good tolerance to external disturbances, we developed a resistive sensor matrix configuration, similar to the one reported in [28]. In the design phase, as a compromise between reducing the overall cost and complexity, we used a relative low number of sensing areas yet still maintained an acceptable quality of signals. Considering a single mattress measuring 190×90 cm, we built a pressure sensing textile based on a resistive matrix of 15×13 uniformly-spaced sensing areas that cover a surface of 125×75 cm (head and feet are not considered). Note that most solutions in the literature have a much higher number of sensors (typically by a factor greater than 10). Figure 2 shows our solution: the central layer is a pressure sensing piezoresistive fabric, while the additional two layers are fabrics with integrated row and column conductors. Row and column conductors are perpendicular. Two analog multiplexers are used to scan rows (row mux) and columns (col mux) in order to select all the sensing areas of the resistive matrix. The row mux sequentially connects each row conductor to V_{cc} (3.3V) through a pull-up resistor R_1 (2 K Ω). When a row is selected (i.e. powered), the col mux sequentially connects each column conductor to a voltage divider stage (pull down resistor R_2 , 10K Ω). Each crossing between a row and a column thus represents a sensing area whose electrical resistance decreases as the applied pressure increases. For the pressure-sensing layer, we used the piezoresistive fabric CARBOTEX 03-82 manufactured by SEFAR AG (Heiden, Switzerland). The top and bottom layers are made of a PET fabric (from SEFAR AG) with integrated evenly-spaced metallic stripes. In our design, the metallic stripes have a 2 cm width and are separated by 3 cm in the top layer (rows) and 8 cm in the bottom (columns) layer. As described in [29], this sensing architecture has parasitic resistivity in the transversal directions due to the surface conductivity of the pressure-sensing layer. To reduce the cross-talk due to the parasitic resistivity, we built our prototype by cutting the piezoresistive layer into strips parallel to the row direction (around 3.5 cm width). The strips were then sewn

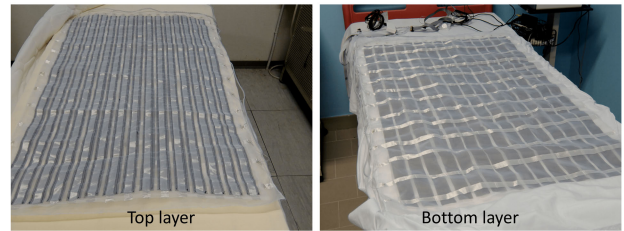


FIGURE 3. Prototype of the pressure mapping system.

TABLE 1. PDC-equipped accelerometer specifications.

Specification	Value
Number of axes	3
Range	± 2 g
Supply voltage	3.3 V
Sensitivity	1mg/LSB
Raw data noise level	$175 \mu\text{g}/\sqrt{\text{Hz}}$ (ultralow noise mode)
Bit resolution	12 bits
Sampling frequency	128 Hz
Shape and dimension	Circular, diameter 2.2 cm

onto the top layer centered on the row conductors. Figure 3 shows the pressure-sensing matrix prototype. The pressure mapping system provides a 800×600 image in which each pixel value is related to the pressure applied on the specific point of the mattress. The pressure image is constructed by a linear spatial interpolation of the raw output values obtained by the 195 sensing areas to obtain the 800×600 image.

C. ACCELEROMETERS

The accelerometers of the PDC were used to extract the ballistocardiograph (BCG) signal [30] for the unobtrusive recording of cardiac activity (i.e. heart rate) of the subject lying on the mattress. For the extraction of the BCG signals, we selected the micropower digital accelerometer ADXL362 (Analog Device Inc, MA, US). The main specifications of the ADXL362 are reported in Table 1. The Smart-Bed simultaneously collects the signals of the three accelerometers (a_1 , a_2 and a_3) placed in different positions over the pressure mapping system. As shown in Figure 4, an accelerometer (a_1) was placed in a central area, the others (a_2 and a_3) in lateral and contro-lateral sites. We used multiple accelerometers for two main reasons. Firstly, averaging the signals from different accelerometers reduces the noise and robustly detects artifacts. Secondly, the multi-site configuration ensures that at least one of the accelerometers lies below the subject, even if the subject is not in a central position on the mattress.

D. ENVIRONMENTAL DATA COLLECTOR AND ENVIRONMENT QUALITY INDEX

The EDC module is based on a Seeeduino V4.2 board, and is equipped with four sensors that collect the following environmental signals: i) sound intensity, ii) temperature, iii) relative humidity, and iv) luminosity. All the signals are collected with a sampling frequency of 1 Hz, except for the sound intensity which is sampled at 20 Hz (due to the fast dynamics of environmental noise and snoring events). The collection

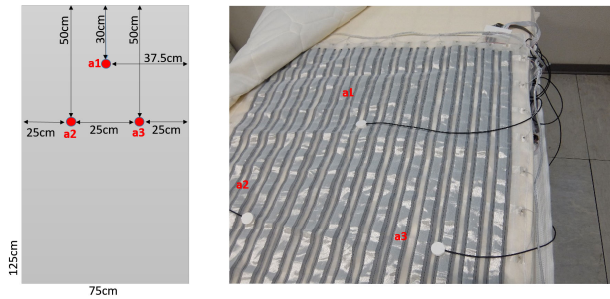


FIGURE 4. Position and topological configuration of the three accelerometers (a1, a2 and a3) over the pressure mapping layer.

of all the ECD signals and parameters is synchronized with respect to the data from the PDC.

We used the collected signals to estimate a binary index regarding the best environmental conditions for sleep (environment quality index, EQI), based on data from the literature. For each environmental parameter, we therefore assigned optimal sleep value ranges in order to obtain four environmental criteria:

- sound intensity: continuous noise level lower than 35 dB, no more than 45 dB for single noisy events [31], [32];
- temperature: minimum temperature of 17°C and maximum temperature of 28°C [33].
- relative humidity: between 40% and 60% [33];
- luminosity: less than 10 lux [34];

The EQI is evaluated for each night's sleep and it is set to 1 if all four environmental criteria are satisfied, otherwise to 0 (not optimal environmental conditions).

In addition to the EQI extraction, we hypothesized that information on sounds such as snoring, environmental noise due to the subject's activity, and voices could contain relevant information on the subject's state during sleep. We thus used the recorded sound information as one of the inputs to classify the behavioural conditions that will be described in Section II-E. For each 30-second epoch, we therefore calculated the mean values and variances of the sound intensity (SI_e, SI_v).

E. SLEEP QUALITY ALGORITHM

The analysis of the PDC data acquired by the Smart-Bed consists of three main post-processing steps: 1) analysis of the PDC signals and extraction of physiological (heart rate and breathing rate) and activity (movement and sleeping posture) data; 2) automatic classification of the subject's behavioural conditions based on the physiological and activity data extracted including the sound information extracted from the EDC as described in Section II-D; 3) exploitation of the classified behavioural conditions to estimate standard sleep evaluation parameters, which are then condensed into a global Sleep Quality Index (SQI).

All the algorithms and analysis were performed in Matlab (R2018b, Natick, Massachusetts: The MathWorks Inc.).

1) PHYSIOLOGICAL AND ACTIVITY DATA

To estimate the breathing rate, we employed a frequency spectrum-based approach. Firstly, we derived the signal averaged over the sensing areas of the pressure matrix (below the lying subject). Then, we evaluated the average signal spectrum (Welch periodogram) to detect the maximum peak of the spectrum in the frequency range 0.1 Hz to 0.35 Hz. In our hypothesis, the maximum peak is likely to correspond to respiratory activity.

We estimated the heart rate from the squared modulus of the grand average raw signal of the three accelerometers. To remove possible components due to respiratory activity or movements, the grand average signal was band-passed in the frequency range of 0.3–20 Hz. We then extracted the heart rate using a method based on an autocorrelation function similar to the ones described in [30], [35], [36].

To evaluate the activity data consisting in the position and motion of the subject on the mattress, we reduced the sensing area density from 15×13 to 3×3 by topological averaging. The position feature vector obtained (9 elements) is assigned by an artificial neural network (ANN) [37] according to six putative classes: i) not on bed, ii) supine position, iii) lying on the left side, iv) lying on the right side, v) prone position and vi) movement. We used a two-layer ANN, the size of hidden layer was set to 10. For the training process, we applied a backward propagation algorithm with scaled conjugate gradient method [38].

Each estimated data sequence (heart rate, breathing rate, position and movements) is temporally divided into 30-second epochs in accordance with the clinical standard in polysomnographic evaluation. For each 30-second epoch, the mean values and variances of heart rate (HR_e, HR_v), breathing rate (BR_e, BR_v), movements (MV_e, MV_v), and position (PS_e, PS_v) were calculated.

2) BEHAVIOURAL CONDITIONS CLASSIFICATION

We classified the subjects' behavioural conditions in 30-second epochs using the input parameters described in Section II-E.1 and II-D: $HR_e, HR_v, BR_e, BR_v, MV_e, MV_v, PS_e, PS_v, SI_e$ and SI_v . We trained a decision tree algorithm with bootstrap aggregation [39] to assign to each 30-second epoch one of the following classes: no bed occupancy, wakefulness, non-REM sleep and REM sleep. We co-recorded the Smart-Bed signals and standard polysomnography with a clinical polysomnographic system in order to estimate the real behavioural conditions and sleep staging following the clinical criteria. The following signals were collected using the standard polysomnographic recordings: electroencephalography, electrocardiography, respiratory airflow, snoring, electromyography, and oxygen saturation. Based on polysomnographic data, each sleep recording is staged in 30-second epochs according to standard clinical criteria [10], then the sleep staging is used as a reference to train the decision tree algorithm.

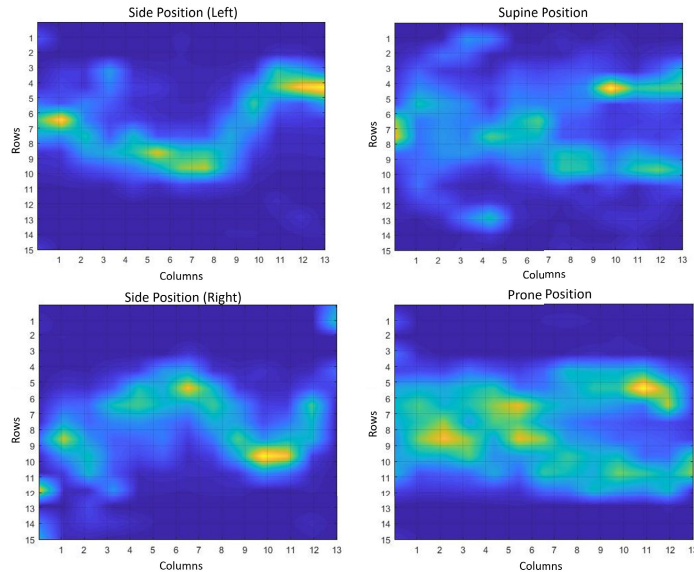


FIGURE 5. Pressure maps measured in four typical sleeping postures: left side, supine, right side and prone.

3) GLOBAL SLEEP QUALITY INDEX

The final step of the sleep quality algorithm was based on the sleep macro-structure estimated previously. Firstly, the sleep macro-structure was used to extrapolate the main sleep time-domain parameters [9], [40], [41] related to each night's sleep, such as: sleep efficiency, sleep latency, REM latency, total sleep time, and wake after sleep onset (WASO). The SQI was then estimated based on the following partial criteria (pc):

- $pc_1 = 1$ if sleep efficiency $> 85\%$, otherwise it is set to 0
- $pc_2 = 1$ if sleep latency < 15 min, otherwise it is set to 0
- $pc_3 = 1$ if $60 \text{ min} < \text{REM latency} < 120 \text{ min}$, otherwise it is set to 0
- $pc_4 = 1$ if total sleep time > 7 hours, otherwise it is set to 0
- $pc_5 = 1$ if $70\% < \text{ratio between non-REM sleep and total sleep time} < 95\%$, otherwise it is set to 0
- $pc_6 = 1$ if WASO < 45 min, otherwise it is set to 0

Finally, the SQI is assessed for each night and defined as:

$$SQI = \sum_i pc_i$$

SQI ranges from 0 (*bad sleep*) to 6 (*good sleep*), with an ordinal scale of seven discrete levels.

F. EXPERIMENTAL PROCEDURES

To evaluate the estimation of position/movement, breathing activity and heart rate, we tested the Smart-Bed prototypes on a group of 15 volunteers (29 to 72 years old, mean=48,4; 8 female/7 male) during wakefulness (signal-testing group). In these wakefulness tests, during experimental sessions the subjects were asked to voluntarily modulate their respiratory activity and change their body position, thus enabling us to collect different respiratory and postural patterns.

The ANN for the classification of the activity data (Section II-E.1) was trained with a dataset of 30-second epochs obtained from six subjects (29 to 59 years old, mean=47,3; 3 female/3 male) during wakefulness (ANN-training group, with different subjects from the signal-testing group).

The decision tree used to classify the behavioural conditions (Section II-E.2) was trained with a dataset acquired from an additional group (condition-training group) of eight subjects (26 to 71 years old, mean=54,3; 1 female/7 male) sleeping on the Smart-Bed prototype whilst being recorded by standard polysomnography (BE LTM, EB Neuro S.p.A., Florence Italy). We used the 75% of the epochs for training and 25% for testing, epochs of training and testing subsets are not overlapped.

To test the durability and robustness of the Smart-Bed and to evaluate the SQI and EQI as a function of time, we collected the Smart-Bed signals from a group (long-testing group with different subjects from the signal-testing, ANN-training and condition-training groups) of five subjects (27 to 45 years old, mean=35,2; 2 female/3 male) over multiple continuous days (from 12 to 231 days).

III. RESULTS

To date, we have developed seven Smart-Bed prototypes to test the modules' (DS, PDC and EDC) functionality, sensing solutions and algorithms. Our estimated cost for our Smart-Bed prototype is around 1000 euros of which approximately 150 euros is for the pressure-sensing matrix. This cost is low for a research prototype and could be lowered even further with a series production (e.g. to the best of our knowledge, existing solutions like XSENSOR [25], SensorEdge [26] and BodyTrak [27] are in the range of 5-10k euros).

Figure 5 shows four examples of sleeping postures detected by the pressure mapping system when a subject is lying

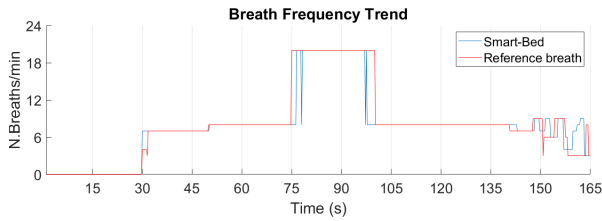


FIGURE 6. Analysis of respiratory signals related to a subject in a supine position: time course of breathing rate (Hz) obtained with Smart-Bed (blue line) and with an estimation of the air-flow in the nasal cannula (reference breath, red line). The respiratory frequency extracted from the Smart-Bed accurately reflects the ground truth data.

on the Smart-Bed (prone, supine, left side, and right side). The chest, upper arms and legs are easily recognizable. In static conditions, the pressure image detects the presence of the subject on the mattress and his/her sleeping posture. In dynamic conditions, when the subject moves while lying on the mattress, the pressure image changes continuously and this variation can be used to determine the subject’s movement during sleep.

Figure 6 shows an example of breathing activity estimated by the Smart-Bed and compared with a ground truth obtained using a thermistor inserted in a nasal cannula. The reference signal is based on measuring the temperature during expiration and inspiration and of the air passing in the nasal cannula. The subjects of the test (signal-testing group) voluntarily controlled and modulated their breathing in order to verify the ability of the Smart-Bed to replay different breathing rates without a significant delay. As shown in Figure 6, the estimation of breathing rate extracted from the Smart-Bed reproduces the reference data well with only a small delay. The same accuracy was observed in all the experimental sessions with different subjects and different voluntarily-modulated respiratory rates.

Figure 7 shows three traces of heart rate estimation compared with the heart rate obtained with reference ECG signals. The heart rate obtained by our mattress proved to be very efficient and accurate. The evaluation of the mean heart rate over the 30-second epoch was very stable and close to real values. Considering the estimation over one-second epochs, the estimated heart rate shows a low pass filtering behavior, with a loss of high frequency components. However, the low-pass filtering showed no particular effects using the 30-second epochs for sleep staging and behavioural condition classification. The estimation of heart rate via Smart-Bed-BCG was accurate and robust when the subject was not moving, as during sleep or in relaxed wakefulness before sleep.

Figure 8 shows the results of the classification of the position and motion of the subject on the mattress using the ANN classifier on the ANN-training group. We obtained an overall accuracy of about 91.8% and more specifically: 83.9% for not on bed, 83.8% for supine position, 96.4% for lying on the left side, 94.5% for lying on the right side, 89.3% for prone position, and 93.1% for movement.

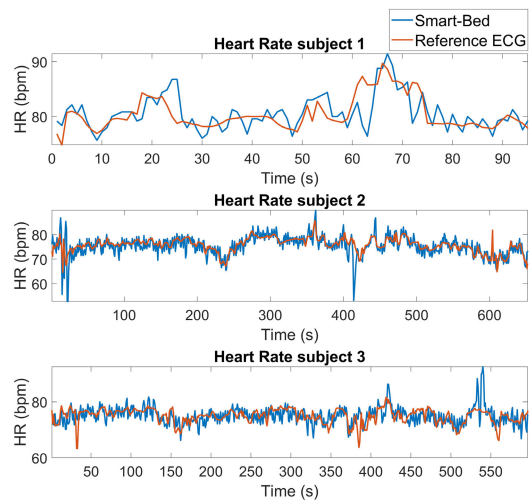


FIGURE 7. Analysis related to three different subjects: heart rate time course (with different time lengths) detected by BCG with the Smart-Bed (blue lines) and simultaneous heart rate signals collected by reference ECG system (red lines). The estimation is performed with a 1 second time resolution.

Output Class \ Target Class	not on bed	supine	left side	right side	prone	movement	Accuracy	False Discovery Rate
not on bed	99 4.8%	0 0.0%	0 0.0%	0 0.0%	0 0.0%	17 0.8%	85.3%	14.7%
supine	0 0.0%	150 7.2%	0 0.0%	0 0.0%	0 0.0%	24 1.2%	86.2%	13.8%
left side	0 0.0%	2 0.1%	160 7.7%	1 0.0%	0 0.0%	11 0.5%	92.0%	8.0%
right side	0 0.0%	0 0.0%	0 0.0%	156 7.5%	2 0.1%	16 0.8%	89.7%	10.3%
prone	0 0.0%	0 0.0%	0 0.0%	0 0.0%	159 7.7%	20 1.0%	88.8%	11.2%
movement	19 0.9%	27 1.3%	6 0.3%	8 0.4%	17 0.8%	1182 56.9%	93.9%	6.1%
	83.9% 16.1%	83.8% 16.2%	96.4% 3.6%	94.5% 5.5%	89.3% 10.7%	93.1% 6.9%	91.8%	8.2%

FIGURE 8. Confusion matrix related to the performance of the position and motion classification (ANN algorithm) regarding the ANN-training group, with six classes: i) not on bed, ii) supine position, iii) lying on the left side, iv) lying on the right side, v) prone position and vi) movement. The positive predictive values and false discovery rate are reported.

We performed the training and testing of the automatic classifier (decision tree algorithm) of behavioural conditions on the condition-training group. From the eight nights of recordings of the condition-training group, we collected a total of 4761 epochs (i.e. about 40 hours). We removed 1280 artifactual epochs due to the poor EEG signal quality of the polysomnography. We extracted 581 epochs of no bed occupancy, 554 epochs of wakefulness, 2193 epochs of non-REM sleep, and 153 epochs of REM sleep. The classification performance obtained with the decision tree algorithm was satisfactory in terms of aim f the classification. The overall



FIGURE 9. Confusion matrix related to the performance of the behavioural conditions classification (decision tree algorithm) regarding the condition-training group, with four classes: no bed occupancy, wakefulness, non-REM sleep, and REM sleep. The positive predictive values and false discovery rate are reported.

accuracy was about 86%, and specifically (see the confusion matrix in Figure 9): 99% for “no bed occupancy”, 83% for “wakefulness”, 83% for “non-REM sleep”, and 79% for “REM sleep”.

Figure 10 reports the variation in estimated heart rate, breathing rate, motion and behavioural conditions as a function of time (in epochs) for one subject in the condition-training group. Within each epoch, the estimated physiological and environmental information (see II-E.2 section) is used as input in the automatic classifier to evaluate the related behavioural condition. The behavioural condition pattern assesses the sleep macrostructure (sleep staging) of the subject and can reproduce the hypnogram.

Figure 11 reports the time course of the SQI and EQI for a subject in the long-testing group, monitored with the Smart-Bed for 60 days continuously. As regards the environmental quality, the deviations in environmental parameters from the optimal ranges are also reported. A comparison of the time courses suggests that sub-optimal environmental conditions have contributed to non- fully restorative sleep. However, it seems that the subject adapted to the environmental conditions (from day 27), demonstrating an improvement in sleep quality. During the durability tests, no functional issues, data losses or hardware faults were reported.

IV. DISCUSSION

The results of Section III show that our mattress is a valid unobtrusive solution for detecting physical, physiological, and environmental parameters.

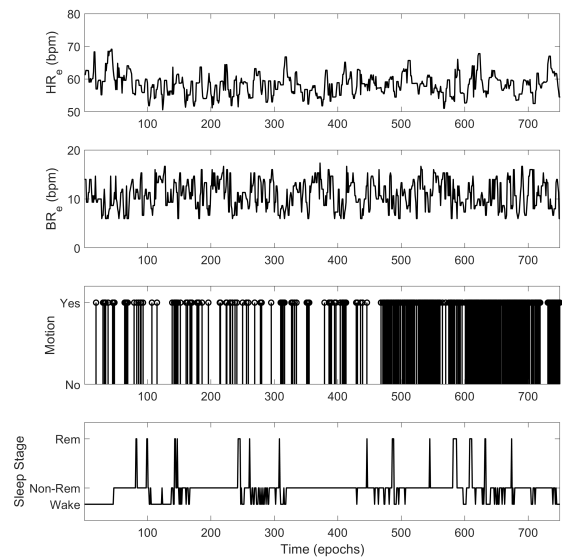


FIGURE 10. Physiological signals and behavioural conditions estimated from the data collected by Smart-Bed for a subject (condition-training group) during sleep. The estimated data are heart rate (beats per minute, bpm), breathing rate (bpm) and motion (movement detected or not). The time unit is the epoch (30 seconds).

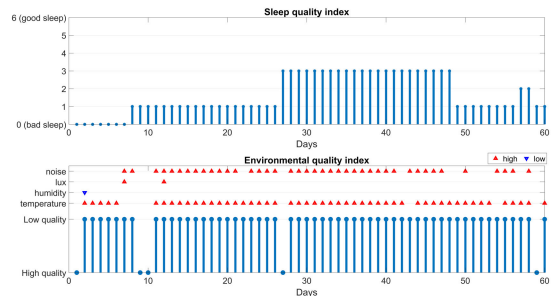


FIGURE 11. Single subject continuously monitored for 60 sleep nights. The time course of the Sleep Quality Index (SQI, seven-level index) and the Environmental Quality Index (EQI, dichotomic index) are shown in the upper and lower panels, respectively. In the lower panel, for each parameter contributing to EQI, up-pointing red triangles and down-pointing blue triangles for each day indicate whether the corresponding parameter exceeded or losing to the optimal range, respectively.

To the best of the authors’ knowledge, our mattress is the only in-bed solution that can simultaneously detect position and motion as well as breathing and heart activity. The WhizPad [15] and the Kinotex [22] were tested for posture/motion and breathing detection, while the solution developed by Kortelainen [23] was assessed for breathing and cardiac activity detection (i.e. no static postures due to the piezoelectric technology). The other examples cited in Section I ([18]–[20], [24]) focus on the measurement of a single parameter (position/movement or a single physiological parameter).

It should also be emphasized that some of the examples in the literature show a much higher performance with regard to the spatial resolution of the pressure mapping system. For example, the XSENSOR pressure mapping system [25], tested in [18] to prevent ulcers, has 6136 sensing areas (52 rows x 118 columns) that can be scanned at a rate

of 1 Hertz. The Smart-Bed pressure mapping system has a smaller number of sensors by a factor of about 30 (195 vs 6136). If the objective was to monitor and prevent pressure ulcers, the lower spatial resolution could be a limitation. However, for a low-cost prototype suitable for future exploitation as a consumer product that monitors sleep quality in the general population, the lower spatial resolution is not a limitation. In fact, we have demonstrated that the pressure mapping system with a lower number of elements still leads to a good evaluation of postural and motion parameters. Many of the prototypes presented in the literature discussion in Section I have a higher number of pressure sensing areas by a factor greater than 10.

In addition, the Smart-Bed, unlike other solutions, is able to monitor a set of basic environmental parameters (sound intensity, relative humidity, temperature and luminosity) that are known to be correlated with sleep quality.

From a technical point of view, we have demonstrated the robustness of the Smart-Bed prototype which continuously monitored five subjects for up to 231 days without significant data losses (data collection and extraction of the SQI and EQI indexes).

The most important result obtained with the Smart-Bed is the classification of the main behavioural conditions characterizing sleep, which is the basis for a robust extraction of an index used to quantitatively assess sleep quality. To the best of the authors' knowledge, the existing smart bed solutions have not been demonstrated as being capable of classifying the different behavioural conditions that characterise sleep. An approach to behavioural assessment based on machine learning was developed and assessed by Wang *et al.* [17] with the WhizPad prototype [15]. However, in their work the authors classified only two classes: sleep vs awake. In fact, the ability to classify four conditions, in particular REM vs non-REM, is a key feature of the design of our prototype. In fact, despite the relative low number of sensors, the Smart-Bed can detect relevant physiological and activity parameters that are integrated through our machine-learning approach.

Monitoring environmental conditions together with physiological parameters could lead to the development of specific applications aimed at identifying causes and thus suggesting solutions to the poor sleep quality. In addition, an integrated environmental-subjective index of sleep quality is advisable.

V. CONCLUSION

In this work, we have described the architecture and preliminary results of an innovative system for non-invasive sleep monitoring in real world contexts. The proposed system, developed within the L.A.I.D. research project, is a low-cost smart mattress (Smart-Bed) capable of recording the signals related to the physiological (cardio-respiratory activity), postural (body position and movements) and environmental (temperature, noise, humidity and luminosity) aspects used to identify the main stages of wakefulness and sleep and to estimate a global sleep quality index and environmental quality index.

Our preliminary tests with the Smart-Bed prototypes verified the full functionality and robustness of the proposed architecture, both considering the hardware and data-processing solutions. However, the results presented herein were obtained from a relatively small number of subjects.

In fact, we are in the process of performing additional in-depth tests on a higher number of subjects to validate and improve the prototypes. This will lead to the final version of the Smart-Bed for the easy and low-cost monitoring of sleep quality for large populations. Sleep investigations based on a validated Smart-Bed solution would enable the sleep macrostructure to be studied in real life. We are also designing a second version of the prototype to improve various engineering aspects. This includes a wireless connection between the sensors and a remote data collection hub in which the data are transmitted when the Smart-Bed detects that the subject is not present.

ACKNOWLEDGMENT

The authors would like to thank the L.A.I.D. project industrial partners: Materassificio Montalese S.P.A., EB Neuro S.P.A., and BP Engineering S.P.A.

REFERENCES

- [1] L. A. Chilcott and C. M. Shapiro, "The socioeconomic impact of insomnia," *PharmacoEconomics*, vol. 10, no. 1, pp. 1–14, 1996.
- [2] M. Daley, C. M. Morin, M. LeBlanc, J. P. Grégoire, J. Savard, and L. Baillargeon, "Insomnia and its relationship to health-care utilization, work absenteeism, productivity and accidents," *Sleep Med.*, vol. 10, no. 4, pp. 427–438, Apr. 2009.
- [3] D. Léger, C. Guilleminault, G. Bader, E. Lévy, and M. Paillard, "Medical and socio-professional impact of insomnia," *Sleep*, vol. 25, no. 6, pp. 621–625, Sep. 2002.
- [4] G. Medic, M. Wille, and M. E. Hemels, "Short-and long-term health consequences of sleep disruption," *Nature Sci. Sleep*, vol. 9, p. 151, 2017.
- [5] J.-A. Palma, E. Urrestarazu, and J. Iriarte, "Sleep loss as risk factor for neurologic disorders: A review," *Sleep Med.*, vol. 14, no. 3, pp. 229–236, Mar. 2013.
- [6] M. G. Terzano, L. Parrino, F. Cirignotta, L. Ferini-Strambi, G. Gigli, G. Rudelli, and S. Sommacal, "Studio morfeo: Insomnia in primary care, a survey conducted on the italian population," *Sleep Med.*, vol. 5, no. 1, pp. 67–75, Jan. 2004.
- [7] M. Michal, J. Wiltink, Y. Kirschner, A. Schneider, P. S. Wild, T. Münzel, M. Blettner, A. Schulz, K. Lackner, N. Pfeiffer, S. Blankenberg, R. Tschann, I. Tuin, and M. E. Beutel, "Complaints of sleep disturbances are associated with cardiovascular disease: Results from the gutenberg health study," *PLoS ONE*, vol. 9, no. 8, Aug. 2014, Art. no. e104324.
- [8] A. Williams and M. Stein, "Clinical value of polysomnography," *Lancet*, vol. 339, no. 8801, p. 1113, May 1992.
- [9] A. Crivello, P. Barsocchi, M. Girolami, and F. Palumbo, "The meaning of sleep quality: A survey of available technologies," *IEEE Access*, vol. 7, pp. 167374–167390, 2019.
- [10] C. Iber, S. Ancoli-Israel, A. L. Chesson, Jr., and S. F. Quan, "The new sleep scoring manual—The evidence behind the rules," *J. Clin. Sleep Med.*, vol. 3, no. 2, p. 107, 2007.
- [11] J. M. Kortelainen, M. O. Mendez, A. M. Bianchi, M. Matteucci, and S. Cerutti, "Sleep staging based on signals acquired through bed sensor," *IEEE Trans. Inf. Technol. Biomed.*, vol. 14, no. 3, pp. 776–785, May 2010.
- [12] *Laid Project*. Accessed: Mar. 11, 2019. [Online]. Available: https://mediaperdormire-com.s3.amazonaws.com/com/LAID_SMART_BED.pdf
- [13] *Materassificio Montalese, Pistoia, Italy*. [Online]. Available: <https://www.materassificiomontalese.com>
- [14] A. Schwarz-Pfeiffer, M. Hoerr, and V. Mecnika, "Textiles with integrated sleep-monitoring sensors," in *Advances in Smart Medical Textiles*. Amsterdam, The Netherlands: Elsevier, 2016, pp. 197–214.

- [15] Y.-W. Liu, Y.-L. Hsu, and W.-Y. Chang, "Development of a bed-centered telehealth system based on a motion-sensing mattress," *J. Clin. Gerontol. Geriatrics*, vol. 6, no. 1, pp. 1–8, Mar. 2015.
- [16] C. Lu, J. Huang, Z. Lan, and Q. Wang, "Bed exiting monitoring system with fall detection for the elderly living alone," in *Proc. Int. Conf. Adv. Robot. Mechatronics (ICARM)*, Aug. 2016, pp. 59–64.
- [17] C. Wang, T.-Y.-F. Chiang, S.-H. Fang, C.-J. Li, and Y.-L. Hsu, "Machine learning based sleep-status discrimination using a motion sensing mattress," in *Proc. IEEE Int. Conf. Artif. Intell. Circuits Syst. (AICAS)*, Mar. 2019, pp. 160–162.
- [18] H. Wong, J. Kaufman, B. Baylis, J. M. Conly, D. B. Hogan, H. T. Stelfox, D. A. Southern, W. A. Ghali, and C. H. Ho, "Efficacy of a pressure-sensing mattress cover system for reducing interface pressure: Study protocol for a randomized controlled trial," *Trials*, vol. 16, no. 1, p. 434, Sep. 2015.
- [19] W.-Y. Chang, C.-C. Huang, C.-C. Chen, C.-C. Chang, and C.-L. Yang, "Design of a novel flexible capacitive sensing mattress for monitoring sleeping respiratory," *Sensors*, vol. 14, no. 11, pp. 22021–22038, Nov. 2014.
- [20] W.-Y. Chang, C.-C. Chen, C.-C. Chang, and C.-L. Yang, "An enhanced sensing application based on a flexible projected capacitive-sensing mattress," *Sensors*, vol. 14, no. 4, pp. 6922–6937, Apr. 2014.
- [21] K. Sakai, G. Nakagami, N. Matsui, H. Sanada, A. Kitagawa, E. Tadaka, and J. Sugama, "Validation and determination of the sensing area of the KINOTEX sensor as part of development of a new mattress with an interface pressure-sensing system," *Biosci. trends*, vol. 2, no. 1, pp. 36–43, 2008.
- [22] S. S. Gilakjani, M. Bouchard, R. A. Goubran, and F. Knoefel, "Long-term sleep assessment by unobtrusive pressure sensor arrays," in *Proc. 3rd Int. Conf. Biomed. Imag., Signal Process. (ICBSP)*, 2018, pp. 23–35.
- [23] J. M. Kortelainen and J. Virkkala, "FFT averaging of multichannel BCG signals from bed mattress sensor to improve estimation of heart beat interval," in *Proc. 29th Annu. Int. Conf. IEEE Eng. Med. Biol. Soc.*, Aug. 2007, pp. 6685–6688.
- [24] R. Grimm, S. Bauer, J. Sukkau, J. Hornegger, and G. Greiner, "Markerless estimation of patient orientation, posture and pose using range and pressure imaging," *Int. J. Comput. Assist. Radiol. Surgery*, vol. 7, no. 6, pp. 921–929, May 2012.
- [25] *Xsensor Technology*. Accessed: Jan. 11, 2019. [Online]. Available: <https://xsensor.com>
- [26] *Sensoredge*. Accessed: Feb. 11, 2019. [Online]. Available: http://sensoredge.com/flexible_sensors.html
- [27] *Boditrak*. Accessed: Feb. 11, 2019. [Online]. Available: <https://www.boditrak.com/products/medical.php>
- [28] J. Cheng, M. Sundholm, B. Zhou, M. Hirsch, and P. Lukowicz, "Smart-surface: Large scale textile pressure sensors arrays for activity recognition," *Pervas. Mobile Comput.*, vol. 30, pp. 97–112, Aug. 2016.
- [29] B. Zhou and P. Lukowicz, "Textile pressure force mapping," in *Smart Textiles*. Cham, Switzerland: Springer, 2017, pp. 31–47.
- [30] M. Nakano, T. Konishi, S. Izumi, H. Kawaguchi, and M. Yoshimoto, "Instantaneous heart rate detection using short-time autocorrelation for wearable healthcare systems," in *Proc. Annu. Int. Conf. IEEE Eng. Med. Biol. Soc.*, Aug. 2012, pp. 6703–6706.
- [31] E. Öhrström and A. Skånberg, "Sleep disturbances from road traffic and ventilation noise—Laboratory and field experiments," *J. Sound Vib.*, vol. 271, nos. 1–2, pp. 279–296, 2004.
- [32] B. Berglund and T. Lindvall, "Community noise," Center Sensory Res., Stockholm Univ. Karolinska Inst., Solna, Sweden, Tech. Rep., 1995.
- [33] Z. A. Caddick, K. Gregory, L. Arsintescu, and E. E. Flynn-Evans, "A review of the environmental parameters necessary for an optimal sleep environment," *Building Environ.*, vol. 132, pp. 11–20, Mar. 2018.
- [34] C.-H. Cho, H.-K. Yoon, S.-G. Kang, L. Kim, E.-I. Lee, and H.-J. Lee, "Impact of exposure to dim light at night on sleep in female and comparison with male subjects," *Psychiatry Invest.*, vol. 15, no. 5, pp. 520–530, May 2018.
- [35] C. Bruser, S. Winter, and S. Leonhardt, "How speech processing can help with beat-to-beat heart rate estimation in ballistocardiograms," in *Proc. IEEE Int. Symp. Med. Meas. Appl. (MeMeA)*, May 2013, pp. 12–16.
- [36] I. Sadek and J. Biswas, "Nonintrusive heart rate measurement using ballistocardiogram signals: A comparative study," *Signal, Image Video Process.*, vol. 13, no. 3, pp. 475–482, Oct. 2018.
- [37] A. Landi, P. Piaggi, M. Laurino, and D. Menicucci, "Artificial neural networks for nonlinear regression and classification," in *Proc. 10th Int. Conf. Intell. Syst. Des. Appl.*, Nov. 2010, pp. 115–120.
- [38] M. F. Müller, "A scaled conjugate gradient algorithm for fast supervised learning," *Neural Netw.*, vol. 6, no. 4, pp. 525–533, Jan. 1993.
- [39] T. G. Dietterich, "An experimental comparison of three methods for constructing ensembles of decision trees: Bagging, boosting, and randomization," *Mach. Learn.*, vol. 40, no. 2, pp. 139–157, 2000.
- [40] M. M. Ohayon, M. A. Carskadon, C. Guilleminault, and M. V. Vitiello, "Meta-analysis of quantitative sleep parameters from childhood to old age in healthy individuals: Developing normative sleep values across the human lifespan," *Sleep*, vol. 27, no. 7, pp. 1255–1273, Oct. 2004.
- [41] A. Gemignani, A. Piarulli, D. Menicucci, M. Laurino, G. Rota, F. Mastorci, V. Gushin, O. Shevchenko, E. Garbella, and A. Pingitore, "How stressful are 105 days of isolation? Sleep EEG patterns and tonic cortisol in healthy volunteers simulating manned flight to Mars," *Int. J. Psychophysiol.*, vol. 93, no. 2, pp. 211–219, 2014.



MARCO LAURINO received the Specialist degree in biomedical engineering from the University of Pisa, in 2009, the Ph.D. degree in neurosciences and endocrine-metabolic sciences from the University of Pisa, in 2014. He is currently a Researcher with the Institute of Physiology, Italian National Research Council. His current research interests include processing of biomedical signals (e.g., High-density-EEG, ECG, skin conductance, and actigraphy), artificial intel-

ligence algorithms applied to medicine, study of the cognitive and emotional aspects in humans through functional neuroimaging techniques, neurostimulation techniques (transcranial magnetic stimulation and transcranial current stimulation) applied to psychopathological conditions, modeling of biomedical systems and control algorithms applied to biomedical systems, development of biomedical technologies in underwater and hyperbaric environments, and telemedicine and connected health.



LUCIA ARCARISI received the bachelor's degree in electronic engineering from the University of Palermo and the master's degree in biomedical engineering from the University of Pisa, in 2018. She is currently a Research Fellow with the Information Engineering Department, University of Pisa.

She has been involved in the design of medical devices and wearable electronic solutions for monitoring and rehabilitation. She has good skills in rapid prototyping, CAD design, and Arduino programming.



NICOLA CARBONARO received the degree in electronic engineering from the University of Pisa, in 2004, and the Ph.D. degree in information engineering from University of Pisa, in 2010, where he worked on the development of wearable system for human activity classification. In 2009, he spent six months as a Visiting Researcher with the Neural Control of Movement Laboratory, Arizona State University. Since 2014, he has been a Chair of the course of biosensors of the biomedical engineering

degree of the University of Cagliari. He is currently an Assistant Professor with the Information Engineering Department, University of Pisa, and also with the Research Center "E. Piaggio." His research is mainly focused on hardware and software development for wearable sensing technology for physiological and behavioral human monitoring for biomedical applications.

Dr. Carbonaro has collaborated on different research projects both at National and European levels. He has published several articles and has made contributions to international conferences and books' chapters.



ANGELO GEMIGNANI is currently a Medical Doctor, a Psychiatrist, and a Doctor in psychology. He is also a Full Professor of neuroscience with the University of Pisa. He is also the Director of the Department of Surgical, Medical and Molecular Pathology and Critical Care Medicine; the Director of the Master in neuroscience, mindfulness and contemplative practices; and the Director of the Clinical Psychology Branch, Pisa University Hospital. His research activity is mainly devoted to

the study of psychobiological mechanisms of sleep functions, consciousness, and its related nonordinary states (i.e., induced by meditation), and negative emotions. As a PI of international research projects on adaptive mental and somatic reactions to huge stressful conditions, he studied sleep and consciousness changes in different human experimental models from elite apnea divers to healthy volunteers simulating the human flight to Mars in the context of MARS 500 and SIRIUS frameworks projects.



DANILO MENICUCCI received the M.S. degree in applied physics and the Ph.D. degree in basic neuroscience from the University of Pisa, Pisa, Italy.

He is currently a Researcher in psychophysiology with the Department of Surgical, Medical and Molecular Pathology and Critical Care Medicine, University of Pisa. His current research interests include sleep psychophysiology, cognitive and emotional modulation of brain, cognitive neuroscience, and experimental psychology and neurophysiology.



ALESSANDRO TOGNETTI (Member, IEEE) received the degree in electronic engineering and the Ph.D. degree in bioengineering from the University of Pisa. He is currently an Associate Professor of bioengineering with the Department of Information Engineering, Research Center “E. Piaggio,” University of Pisa. He is also the Vice President of the degree course in biomedical engineering at the University of Pisa, where he holds courses in biosensors and bioelectric phenomena.

His research activity is focused on the design and development of wearable multisensory technologies for measurement and analysis—outside the laboratory and during daily activities—of posture and human movement and physiological signals. The main scientific skills range from the development of innovative biomedical sensors—starting from the physical principle and enabling technology—to system integration, from signal processing and information to the development of ICT applications for health monitoring, rehabilitation, robotics, and human–machine interaction. The main scientific interests concern the development of soft sensors (flexible, e-textiles) for monitoring and analyzing human movement (upper and lower limbs with particular attention to both physical and neurological rehabilitation applications), noninvasive biomedical devices (physiological signals, physical activity, and innovative interfaces for prostheses), and sensory fusion (fusion between physiological signals and inertial sensors for an accurate classification of human activity, and fusion of soft and inertial sensors to improve movement reconstruction performance by systems wearable). Much of the research was carried out in the context of national and international research projects (more than 20 projects of which 12 were European) and through numerous scientific collaborations with universities, research institutes, and companies both nationally and internationally. His research activity has generated more than 100 international contributions.

• • •