

Received 21 November 2023, accepted 3 December 2023, date of publication 7 December 2023, date of current version 13 December 2023.

Digital Object Identifier 10.1109/ACCESS.2023.3340252

RESEARCH ARTICLE

Calculation of the Proportion of Population Using Clean Cooking Fuel and Technology Based on Earth Big Data: A Case Study in the South of the Yangtze River in China

JIANPING PAN^{1,2}, YUXIN YUAN¹, ZHIHAO GUO¹, MINGQUAN WU³, YIMENG LI¹, CHEN QI¹, AND HUIJUAN ZHANG⁴

¹School of Smart City, Chongqing Jiaotong University, Chongqing 400074, China

²Technology Innovation Center for Spatio-Temporal Information and Equipment of Intelligent City, Ministry of Natural Resources, Chongqing 401120, China

³State Key Laboratory of Remote Sensing Science, Aerospace Information Research Institute, Chinese Academy of Sciences, Beijing 100101, China

⁴Geological Bureau of Ningxia Hui Autonomous Region, Ningxia 750021, China

Corresponding author: Yuxin Yuan (622210100001@mails.cqjtu.edu.cn)

This work was supported in part by the Strategic Priority Research Program of the Chinese Academy of Science under Grant XDA19090131, in part by the Key Research and Development Program of Ningxia Autonomous Region: Ecological Environment Monitoring and Platform Development of Ecological Barrier Protection System for Helan Mountain under Grant 2022CMG02014, and in part by the Combined Postgraduate Training Base Construction Project in Chongqing under Grant JDLHPYJD2019004.

ABSTRACT Cooking is a very decentralized and private way of energy consumption in human activities. The existing investigation and statistical analysis can't effectively calculate the proportion of population relying on clean cooking fuel and utilization technology in the region. Therefore, based on the big data of the earth, this paper adopts the combination of spatial analysis and statistical analysis to determine the survey sample area, and according to the economic conditions, topographic characteristics, national policies for new energy construction and living habits of the provinces and cities under investigation, the questionnaire survey is conducted for the research area to calculate the proportion of the regional population relying on clean cooking fuels and utilization technologies. Taking the south of the Yangtze River in China as an example, the paper effectively calculates that 88.25% of the population depends on clean cooking fuel and technology in this region, of which 89.81% are in urban areas and 79.87% are in rural areas. Analysis of the survey data shows that the proportion of the population using clean cooking fuels and technologies is related to factors such as economic development, income and resource endowment. There is a large urban-rural gap in terms of energy consumption tendency and structure in the south of the Yangtze River in China and cooking energy consumption in rural households also varies from region to region. The technical ideas and conclusions of the paper have high reference application value, which can help promote the upgrading of clean energy utilization and provide data basis for relevant decision and policy making.

INDEX TERMS Clean cooking fuel and utilization technology, population ratio, earth big data.

I. INTRODUCTION

To promote global energy transformation, the United Nations has made SDG 7 "Affordable and Clean Energy" one of the 17 goals of the United Nations 2030 Agenda for Sustainable Development. The main types of household energy

The associate editor coordinating the review of this manuscript and approving it for publication was Gaetano Zizzo.

consumption are fuelwood, straw, coal, electricity, biomass such as leaves and grass, biogas and liquefied petroleum gas. According to the World Bank's 'State of Global Cooking Energy' report, the world is making slow progress towards securing access to clean cooking, a key component of sustainable development Goal 7. By 2021, 2.8 billion people worldwide will still be using traditional polluting fuels and technologies for cooking, costing the world more than

\$2.4 trillion annually, including impacts on health (\$1.4 trillion), climate (\$0.2 trillion) and women (\$0.8 trillion in lost productivity) [1].

Most of China's rural household energy consumption is mainly based on the direct combustion of traditional biomass such as straw and firewood, which not only leads to low energy use efficiency but also leads to a large number of environmental pollution problems [2]. The single rural energy structure and unreasonable consumption patterns have led to a great waste of rural energy, and although renewable energy sources such as solar energy and biogas are developing rapidly, they account for a very low proportion of rural domestic energy consumption [3]. In addition, the energy consumption level and structure of rural households in each region have obvious differences and regional characteristics [4], and their energy consumption choices are influenced not only by economic factors such as household income, fuel prices and collection costs but also by cultural factors such as cooking habits, female migrants [5] and education levels, as well as external complex influences such as government policies on clean energy subsidies. Due to the large size and population of the area south of the Yangtze River in China studied in this article, traditional sample selection methods may lead to significant errors when conducting questionnaire surveys. This error includes not taking into account important factors such as the economic development level of each province, as well as the problem of directly randomly selecting survey sample areas. In order to address this challenge, this article carefully selected suitable survey implementation locations using Earth's big data technology. Through this scientific method, we can more accurately calculate the proportion of residents in various provinces and cities who rely on clean cooking fuels. This process will help improve the credibility and logical rigor of the investigation.

This article first briefly reviews the research achievements in household energy surveys, especially cooking energy. In the previous research, we discussed some limitations of the current survey methods. Next, a new research method (combined Earth big data) is introduced. Proposed the selection of sample areas based on Earth's big data, scientifically calculating the proportion of China's population relying on clean cooking energy using formulas, and some ideas for future research. to understand the urban and rural residents' cooking energy consumption in production and life, to lay the foundation for suitable energy structure adjustment in China.

II. LITERATURE REVIEW

A growing literature examines household cooking energy [6], [7], [8], [9]. Depending on the region/country studied and the current social context, various studies have highlighted different domestic and individual characteristics that influence cooking fuel decisions [10]. DeFries et al. [11] used household level data from the 61st round of NSS conducted from July 2004 to June 2005 to understand the selection of

cooking fuels and their influencing factors in Indian households. It has been found that rural households in India rely heavily on traditional biofuels, with more than 75% of rural households using wood as their primary cooking fuel, and that factors such as income and energy convenience influence the energy source chosen for household cooking activities [12] Paudel et al. [13] analyzed and summarized cooking fuel usage patterns in Nepal using census data from 2000 to 2018, and in China, the proportion of daily hours spent by residents using electricity and natural gas for cooking activities is on the rise, with a national average of approximately 70% in 2017 [14].

Energy utilization significantly impacts the environment and climate, where non-clean energy sources such as fossil fuels can lead to harmful greenhouse gas emissions, such as carbon dioxide [15] and can also produce harmful gases such as sulfur oxides and nitrogen oxides. There are still 2.6 billion people who use wood, charcoal, dung, and coal for cooking and heating, which leads to more than 4 million premature deaths each year due to indoor air pollution [16]. Household energy consumption is an important component of the country's energy demand, usually referring to all types of energy consumed in daily life, including energy consumed for lighting, cooking, heating, hot water, household appliances, etc [17]. Energy demand in developing countries tends to be suppressed and there is a significant gap between urban and rural household energy consumption [18], [19], [20]. Therefore, it is important to investigate energy equity in developing countries to meet the basic needs of human survival and to promote distributional equity in social progress [21]. At present, China's household energy expenditure is significantly uneven, with urban households generally having lower energy inequality than rural households, but along with the implementation of China's comprehensive energy transition policy and the deepening of urban-rural integration in recent years, the problem of household energy inequality between urban and rural areas has improved significantly [22].

There is extensive literature examining household energy consumption in China, with certain studies focusing only on rural or urban areas [23], [24], [25], while others consider the overall [26], [27], [28]. At present, there are fewer quantitative studies of fixed-point surveys at the farm household level, and mostly for Beijing, Tianjin, Hebei, Northeast, Southeast and other regions of the actual household research data analysis of rural household living energy consumption structure [29], [30], [31]. The existing surveys, studies and statistics on energy types and their utilization methods only carry out statistics and analysis on energy types, total utilization and industry distribution from a macro perspective. Currently, most literature on cooking fuels is based on national census data, which is time-consuming, laborious, and difficult to update. In addition, The area south of the Yangtze River in China amounts to millions of square kilometers, and the questionnaire survey unit is aimed at sampling points of dozens of square kilometers. The huge contrast in the area

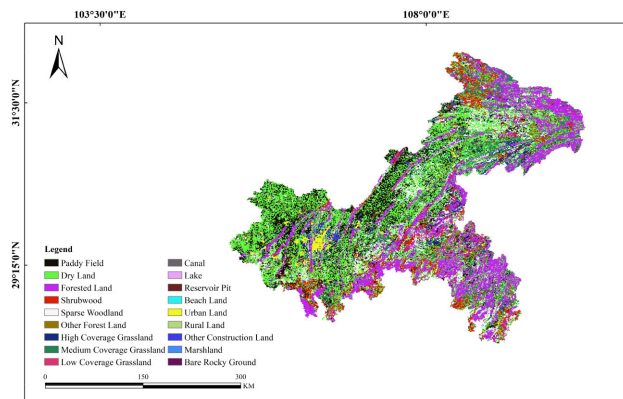


FIGURE 1. Land use data. (Chongqing municipality as an example.)

is the main challenge in the research process. At present, based on the earth’s big data, such as remote sensing images, etc., regional scientific quantitative projection is still blank. By using remote sensing images, land use data, etc., we can intuitively obtain development data of various provinces and cities, understand their level of development, and combine GDP to classify each province and city, thus selecting survey sample areas more scientifically and objectively. Based on the aforementioned issues, this article adopts the “pyramid” hierarchical approach to tackle difficult issues. The specific idea is as follows: (1) When selecting sampling points, the layered area should be from large to small; (2) When calculating the population proportion, the stratified area ranges from small to large. This method can be extended to any country in the world.

III. MATERIALS AND METHODS

A. STUDY AREA

The study area is located in the south of the Yangtze River in China, which is usually south of the Qinling-Huaihe-Line, east of the East China Sea and south of the South China Sea, and is located in the eastern monsoon region of China, roughly including most of Jiangsu, most of Anhui, Zhejiang, Shanghai, Hubei, Hunan, Jiangxi, Fujian, most of Yunnan, Guizhou, eastern Sichuan, Chongqing, Guangxi, Guangdong, Hainan, Hong Kong, Macau, Taiwan, southern Shaanxi, southernmost Gansu, and the southernmost part of Henan. Among them, Hong Kong and Macao are cities, Shaanxi, Gansu and Henan south of the Yangtze River is a small area, so the article mainly considers Jiangsu, Anhui, Zhejiang, Shanghai, Hubei, Hunan, Jiangxi, Fujian, Yunnan, Guizhou, Sichuan, Chongqing, Guangxi, Guangdong, Hainan, Taiwan, a total of sixteen provinces.

B. DATA SOURCES

The data used in this paper mainly include vector data of national administrative divisions(Data sourced from “Geographical Information Monitoring Cloud Platform”, <https://www.webmap.cn/main.do?method=index>), land use data (Data sourced from “Geographical Information Moni-

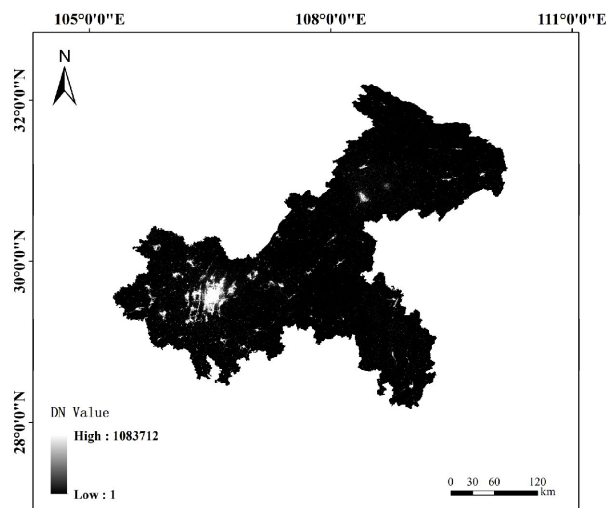


FIGURE 2. Noctilucent remote sensing image of LJ1-01. (Chongqing municipality as an example.)

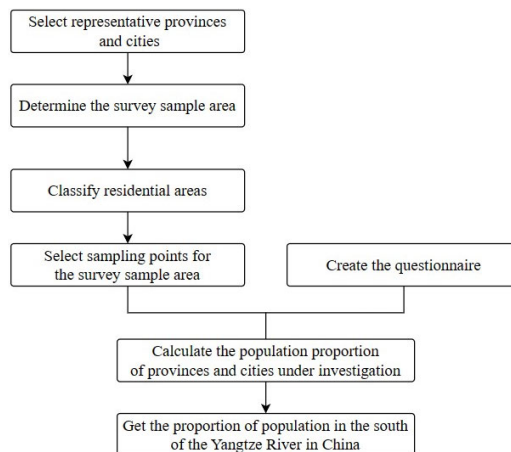


FIGURE 3. Technical route.

toring Cloud Platform”, <http://www.dsac.cn/DataProduct/Detail/200804>) (as shown in Figure 1), “LJ1-01” nighttime light remote sensing image at Wuhan University (as shown in Figure 2)(Data sourced from: <http://59.175.109.173:8888/app/login.html>), per capita GDP data of provinces/cities and counties(Data sourced from official statistical bureaus of various provinces and cities), Internet data (Internet map, place names), field survey sampling data(questionnaire survey results) and agricultural census data (as shown in Table 1)(Data sourced from “National Bureau of Statistics”, <http://www.ngcc.cn/ngcc/>).

C. ROUTE AND METHOD

Based on the big data of the earth (including administrative division vector map, GDP, nighttime light remote sensing image, land use data, etc.), this paper uses the methods of spatial analysis, questionnaire survey and statistical analysis, and takes “representative province/city selection - survey

TABLE 1. Composition of households using various types of cooking and heating fuels by region in 2016.

District	Firewood	Coal	Electricity	Gas	Biogas	Solar Energy
Yunnan	66.3	13.1	84.0	3.7	2.3	0.6
Sichuan	63.2	2.1	58.6	37.5	2.3	0.2
Chongqing	61.2	2.6	68.9	36.9	0.6	0.3
Guangxi	59.1	0.2	67.8	50.4	1.4	0.2
Hubei	50.8	3.0	58.1	60.0	1.4	0.3
Anhui	50.0	1.3	73.0	65.9	0.1	0.2
Hainan	43.4	0.3	64.8	75.5	0.7	0.1
Jiangxi	40.1	5.7	56.2	63.6	0.4	0.3
Guizhou	39.1	43.0	88.3	4.3	0.5	0.2
Hunan	36.1	14.3	64.8	58.7	0.7	0.3
Jiangsu	26.5	0.5	72.0	87.0	0.2	0.3
Guangdong	24.2	0.2	67.1	86.4	0.2	-
Zhejiang	20.2	0.2	69.9	95.5	0.1	0.2
Fujian	19.5	0.3	86.9	76.1	0.5	0.2
Shanghai	16.1	0.1	72.0	97.2	0.5	0.2

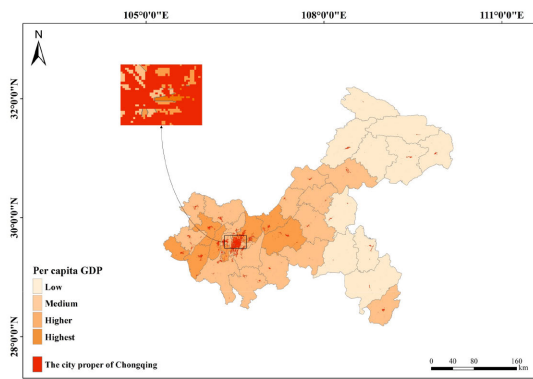


FIGURE 4. GDP hierarchical map superimposed with nighttime light remote sensing data.

sample area determination - residential area type division - sampling point” as the main line to scientifically analyze and calculate the proportion of the population in the south of the Yangtze River in China relying on clean cooking fuel and technology. This paper adopts the idea of “pyramid” stratification to project the population proportion. The technical route is shown in Figure 3.

1) SELECTION OF REPRESENTATIVE PROVINCES AND CITIES

According to the composition of farmers using various cooking and heating fuels in various regions in 2016 (from the bulletin of the third national agricultural census), the provinces with similar energy consumption ratios were divided into two groups. One province was selected for the questionnaire, and the results of the other province were calculated according to the energy consumption ratio. This paper selects Yunnan, Chongqing, Anhui, Guizhou, Jiangsu, Guangdong, Fujian and Jiangxi for the questionnaire survey, and other provinces and cities are calculated by using a similar percentage of energy consumption.

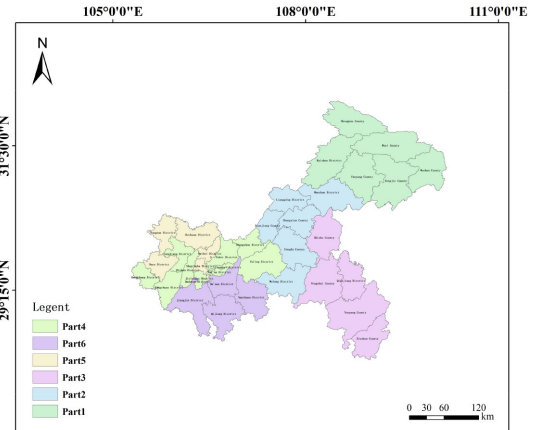


FIGURE 5. Regional grouping map of Chongqing.

2) ESTIMATION OF SURVEY SAMPLE AREA BASED ON MULTI-SOURCE DATA

- **Step 1:** Determine the survey sample area. Taking the district and county administrative maps of the survey provinces and cities as units, based on per capita GDP data of each district and county, the survey provinces and cities were divided into four levels, namely highest, higher, medium and low, and each survey sample area was formed according to the level range (the highest level was not included in the sampling scope). In the survey sample areas formed by the higher, middle and lower levels, the proportion of urban land and rural land in each survey sample area to the whole survey province and city was counted by using GIS software. Combined with the actual number of sampling points from land use data, the survey sample areas were determined according to the order of the percentage.
- **Step 2:** Classify the type of residential area. Based on the nighttime remote sensing data, land use data and administrative division map, etc., the GIS software is used to obtain the light index. Combining the rural settlements in the land use data, the urban residential areas and rural residential areas have been classified.
- **Step 3:** Select sampling points for the survey sample area. According to the GDP classification, geographical location and other factors, the survey provinces were grouped into N regions, and the area size of each area is similar. The number of urban raster points and rural raster points in each group was calculated and summed, and the top three regions in terms of urban raster points and rural raster points were selected as the survey sample areas for the field questionnaire survey (by default, the proportion of the population using clean cooking fuels in urban settlements is 100%). Therefore, there are 6 sample areas in each province and city, including 3 urban areas and 3 rural areas.
- **Step 4:** Count survey samples. All valid questionnaires from urban and rural survey areas were counted, invalid

TABLE 2. The questionnaire in the sample area was summarized.

Coal	Electricity	Straw	Solar cooker	Biogas	liquid gas	population
0	430	200	0	0	500	4
0	1100	0	0	0	500	3
0	0	500	0	0	480	3
0	700	0	0	0	240	3
0	350	0	0	0	24	4
0	400	150	0	90	0	5
0	180	0	0	0	60	4
0	0	0	0	0	350	4
0	400	0	0	0	1000	5
0	500	0	0	0	1200	6
0	240	0	0	0	500	4
0	500	0	0	0	600	5
0	80	0	0	0	800	5

questionnaires were excluded, and the proportion of residents relying on clean cooking fuels and technologies B_i and C_i were calculated for each sample (B_i represents the proportion of population using clean cooking fuels and technologies in urban areas, C_i represents the proportion of population using clean cooking fuels and technologies in rural areas, and i represents the number of samples).

- **Step 5:** Estimate the population proportions of the survey provinces and cities. The proportions D_i and E_i (D_i and E_i are the proportions of urban and rural residents using clean cooking fuels and technologies after the weighted average of the samples) are the proportions of the population relying on clean cooking energy and technologies in the surveyed provinces and municipalities, based on the proportions B_i and C_i .
- **Step 6:** Obtain the proportion of population in the region south of the Yangtze River. Using a combination of indicators such as GDP per capita and population density, the proportion of the population in the region south of the Yangtze River in China that relies on clean cooking energy and technology is projected.

Take Chongqing city as an example, using the GDP per capita data to classify the districts and counties in Chongqing city, the city proper of Chongqing is eliminated according to the nighttime light remote sensing data, as shown in Figure 4. The districts and counties with similar geographic location and the same grade are divided into a group, and are grouped to get the Chongqing regional grouping map (Figure 5).

3) QUESTIONNAIRE INVESTIGATION

According to the economic conditions, terrain characteristics, national policies on new energy construction and living habits of the surveyed provinces and cities, we develop questionnaires to focus on energy accessibility and resident income levels. The questionnaire includes the permanent population of residents, annual income, and the consumption and expenditure of various energy sources on cooking each year to help

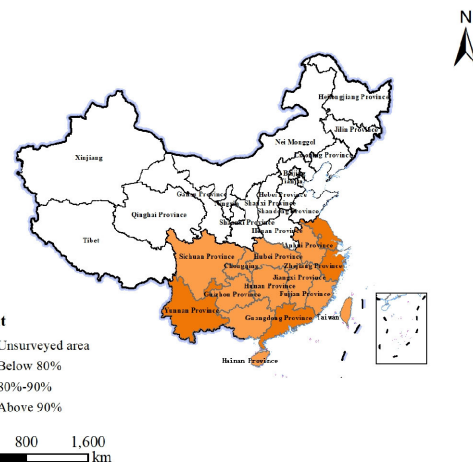


FIGURE 6. The proportion of the population using clean cooking energy and technology in the south of the Yangtze River in China.

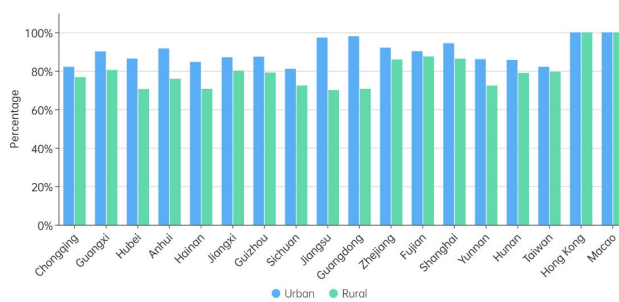


FIGURE 7. Survey results of 16 provinces south of Yangtze River.

analyze the results later. Statistics on residents' intentions and needs provide ideas for the promotion of new energy in the future. One county was randomly selected within the survey sampling area and three sampling sites were randomly selected within the selected county for the urban land area and three sampling sites for the rural land area to conduct field questionnaires (by default, the percentage of the population in the urban residential area for using clean cooking fuels was 100%).

Taking residential households as the unit and cooking energy consumption as the core, the survey mainly covers annual household income, population, the energy consumption of coal, electricity, gas and firewood in the cooking process and energy policy issues. A total of 958 valid samples were obtained, including 106 questionnaires from Jiangxi, 72 questionnaires from Guangdong, 131 questionnaires from Anhui, 128 questionnaires from Chongqing, 169 questionnaires from Yunnan, 108 questionnaires from Guizhou, 146 questionnaires from Fujian, and 98 questionnaires from Jiangsu.

4) SAMPLE STATISTICS

After completing the questionnaire survey of 8 provinces and cities, the questionnaire of each sample area is sorted into the format of Table 2, where the figure represents the annual

consumption amount of this energy. Use formula (1) ~ (2), as shown at the bottom of the page, to calculate the proportion of population relying on clean cooking fuel and technology in each sample area. The formula for calculating the proportion of clean cooking energy per household.

The calculation formula of the population proportion of clean cooking energy in the sample area.

After calculating the proportion data of three cities and towns in a province and city respectively, multiply them by their respective weights and add them, where the weight is equal to the number of grids in the region/the number of grids in the selected three regions, we can get the proportion of the population of the urban land in the province and city relying on clean cooking fuel and technology. Similarly, we can get the proportion of rural villages.

IV. RESULTS

A. CALCULATION RESULT

In this paper, the use of big data of the earth and the use of weights before the sample area calculation are added to the traditional questionnaire survey and statistical analysis methods, so that the calculation results are not only scientific at the macro level, but also improve the continuity at the micro level. Therefore, the survey results are more effective. The percentage of the population using clean cooking energy and technologies in the south of the Yangtze River in China is 88.25%, the results of each province are shown in Figs. 6 and 7, with 89.81% in urban areas and 79.87% in rural areas.

By referring to the statistical yearbooks of the provinces, we obtained data on the consumption of various types of energy. In addition, we obtained survey data from national ministries and commissions. Comparing our calculations with the data from these sources, we found that they are relatively consistent, which indicates that our findings are reliable.

B. HOLISTIC ANALYSIS

The results of the survey are presented in a bar chart to show the results more directly. Figure 7 shows the histogram of the proportion of clean cooking fuels and technologies used in each province. As can be seen, the proportion of people using clean cooking fuels and technologies is higher in urban areas than in rural areas within the same province.

Figure 8 shows a graded color chart of the proportion of the population relying on clean cooking fuels and utilization technologies in urban and rural areas south of the

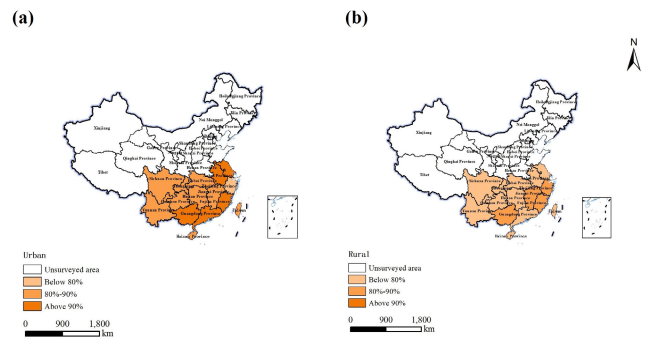


FIGURE 8. The proportion of population dependent on clean cooking fuel and technology south of Yangtze River: (a) Urban. (b) Rural.

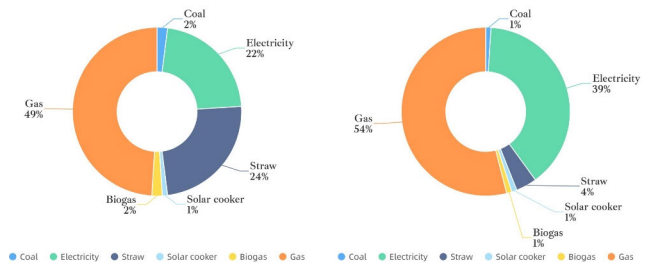


FIGURE 9. Comparison of household cooking energy structure. (a) Energy consumption structure of rural household cooking. (b) Energy consumption structure of urban household cooking.

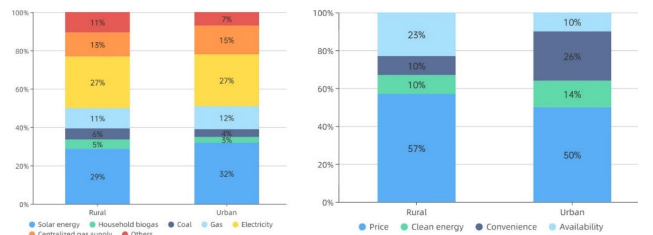


FIGURE 10. (a) Willingness to use energy in rural areas and urban areas. (b) The first consideration for rural and urban use.

Yangtze River. It can be found that in the more economically developed coastal provinces, the proportion in urban area is significantly higher than that in the interior, so we infer that the proportion of the population using clean cooking energy is related to various factors such as geographic location, income and the degree of economic development of the cities.

Since there is a phenomenon of “multiple energy sources” in household cooking energy consumption, we first analyze the main cooking energy sources (the most consumed energy sources in cooking activities). There are seven main types of

$$\frac{\sum \text{Cooking consumption per household relying on clean energy}}{\sum \text{Total energy consumption per household}} \tag{1}$$

$$\frac{\sum (\text{Proportion of clean energy per household} \cdot \text{number of people in the household})}{\text{Total population}} \tag{2}$$

cooking energy sources in this survey, including coal, straw, electricity, gas (LPG, natural gas, etc.), biogas, solar cookers, and others. The main cooking energy structure of households in the south of Yangtze River in China was obtained by counting and calculating the questionnaires. We found that gas and electricity are the main sources of cooking energy in households, with the highest percentage of households using gas (46%) and electricity (37%) 14% of households using non-clean energy sources such as coal or straw as the main source of cooking energy. In the case of developing countries, there are still spatial differences in household energy consumption, and the uneven and insufficient development of energy markets profoundly affects energy equality between urban and rural areas [32], [33], [34], [35], [36]. Therefore, we counted the main cooking energy sources of urban and rural households separately and obtained the difference in energy consumption structure between urban and rural households, as shown in Figure 9. The results show that the proportion of gas and electricity in the cooking energy of urban and rural households is higher than that of other energy sources, but the proportion of gas and electricity in the cooking energy of urban households is significantly higher than that of rural households. The housing infrastructure in urban areas is relatively complete, and most areas are equipped with natural gas pipelines, so more urban households choose to use natural gas for daily cooking activities than rural households. In rural areas where natural gas pipelines are not available, liquefied petroleum gas (LPG) is the main source of cooking energy as a convenient source of cooking energy. Electricity is used by 39% and 22% of households in urban and rural areas respectively, and this part of daily cooking activities includes the use of electric rice cookers and induction cookers. In rural areas, biomass energy sources such as crop straw and firewood are more readily available, so rural households rely more on straw than electricity for cooking activities, with 24% of this energy use. The use rate of coal and biogas in household cooking activities is low at 1%. In general, urban and rural households rely on clean energy sources such as gas and electricity for cooking activities, and the improvement of the cooking energy structure in rural households requires a further reduction in the use rate of firewood and straw.

We analyzed the energy use preference of the residents in the survey questionnaire, as shown in Figure 10. From the figure, we found that both rural and urban residents prefer to use electricity and solar energy for cooking. When rural residents ranked the energy use of their lives, 57% of them gave priority to saving money, while only 10% of them placed the use of clean energy in the first place. It can be seen that most rural residents place more emphasis on affordability when choosing cooking energy. In addition, some residents mentioned that there are sometimes power outages in rural areas, during which they are unable to use appliances and thus choose to use non-clean cooking fuels such as straw and firewood. These may be the reasons for the relatively low percentage of the rural population relying on clean energy for cooking.

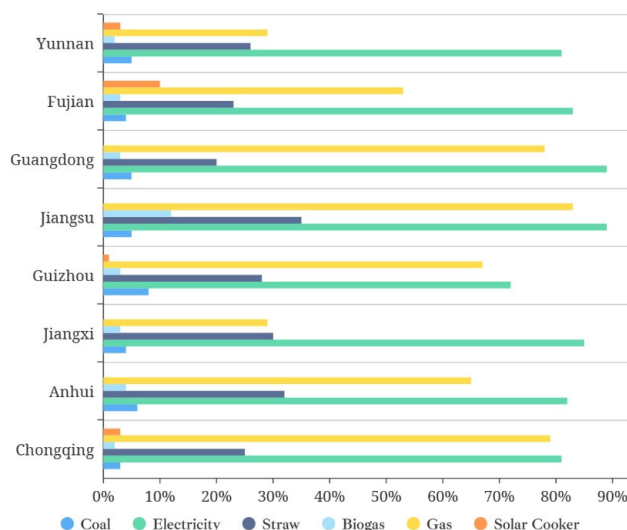


FIGURE 11. Rural household cooking energy consumption in the sample area.

When urban residents ranked the basis of energy use, 50% of them gave priority to saving money, but at the same time, 26% of them placed convenience in the first place, which is 16 percentage points higher than the 10% of rural residents. Compared to rural residents, the majority of urban residents prioritize saving money as their first consideration, while also considering the convenience of energy use. Therefore, although coal and gas (mainly LPG) have price advantages, urban residents tend to give preference to clean energy such as natural gas, which is already popular in urban area as a cooking fuel. The greater availability and ease of use of clean energy and technologies in urban areas may be an important reason for the relatively high proportion of people relying on clean cooking energy in towns and cities.

C. ANALYSIS OF RURAL COOKING ENERGY USE

At present, rural areas in some regions of China are still dominated by traditional energy supply, and the quality of bulk coal used in rural areas is poor, with high ash and sulfur content, and the clean use of modern energy needs to be further improved; the energy consumption level has been hovering at a low level for a long time, and the gap with urban areas is increasing, with large differences in different provinces and regions [37], so it is necessary to further analyze the energy use in rural cooking. Statistics on the use of various types of energy in each household in the sample provinces and cities, as shown in Figure 11, reveal that the rural households that use gas and electricity in their cooking activities account for the largest proportion, followed by straw.

1) COAL

In recent years, China’s energy business has achieved historical achievements from scratch to rapid development, from “coal-based” to “clean and diversified” development. Therefore, the proportion of using coal for cooking in each

sample province is low. The highest proportion in the survey sample area is Guizhou Province (8%), followed by Anhui Province (6%), and the lowest is Chongqing City, with only 3%. The demand for coal among rural residents in China shows spatial differences. On the other hand, it also indicates that the coal consumption of rural residents in each province shows certain regional characteristics. The difference in resource endowment may be the reason for the large difference in cooking energy consumption between regions. From the regional distribution of coal industry chain producers in China, the midstream producers of the coal industry chain are mainly distributed in Shanxi, Guizhou and Inner Mongolia regions. The availability of resources directly determines the level of demand of the residents, and therefore Guizhou has the highest proportion of coal in rural areas for cooking activities.

2) ELECTRICITY

For the past few years, the Chinese government has attached importance to environmental pollution control and low-carbon development, and has increased support for renewable energy. 100% electricity penetration has been achieved in China by the end of 2015. Overall, the proportion of cooking with electricity (electric rice cooker, induction cooker, etc.) has reached over 70% in all regions, but there are certain spatial differences. The level of household income is an important influencing factor, and the questionnaire shows that most households with an annual income of less than 50,000 yuan will not choose electricity for daily cooking activities. Therefore, the proportion of electric energy consumption is higher in provinces with generally higher economic levels, such as the more developed coastal areas of Jiangsu and Guangdong, where the proportion of using electric energy as cooking energy is as high as 89%, while the lowest proportion of relying on electric energy for cooking is 72% in the relatively underdeveloped western part of the economy.

3) STRAW

The pattern of straw energy consumption in China is consistent with the distribution of crops. Due to the geographical environment and climatic conditions, the distribution of crop straw resources in China is generally characterized by a stepped distribution of “high in the east and low in the west, high in the north and low in the south” [38]. China’s straw resources are mainly concentrated in Northeast China, North China and the middle and lower reaches of the Yangtze River, accounting for 20.7%, 24.6% and 22.3% of the country’s total straw resources respectively, and most of these regions belong to the key development zones of China’s straw resources [39]. Survey data show that Jiangsu, Anhui and Jiangxi provinces, which belong to the middle and lower reaches of the Yangtze River, have the highest proportion of using straw for cooking activities, at 35%, 32% and 30% respectively. The average annual temperature of the middle and lower reaches of the Yangtze River is 14-18°, and it is an important base for

grain, oil and cotton production in China. It is also the most abundant water resource area in China, where crops can be ripe twice a year, the area south of the Yangtze River can develop a triple cropping system with double-season rice crops, so the amount of straw resources in the region is very large, and local farmers are used to using straw as the main fuel to meet their cooking needs.

4) BIOGAS

From the results of this survey, it can be found that the proportion of using biogas for cooking in the south of Yangtze River in China is small, except for Jiangsu which is 12%, other provinces and cities are below 5%. In the late 1950s, China vigorously promoted biogas energy and carried out large-scale construction of biogas for rural households, but the construction of biogas soon fell back due to the limitations of backward technology, regional differences and sector imbalance [40]. At present, the effect of rural biogas projects in China is not ideal. The survey results show that the utilization rate of rural biogas digesters is about 61.4%. The main reasons include inadequate management of biogas digesters, increased cost of building biogas digesters, low rate of mechanization [41] and hard-to-solve faults, etc. There are many phenomena of abandoning biogas digesters, and the enthusiasm of farmers to use biogas digesters is low. The number of household biogas additions nationwide has been decreasing year after year, and the number of household biogas scraps has been increasing year by year. In 2017, more than twice as many household biogas wastes were reported nationally as in 2016, reaching more than 1.5 million households in 2018. With a large number of household biogas reaching its normal service life, and the impact of policies such as village integration, ecological migration, poverty alleviation and relocation, farming structure adjustment, and delineation of no-farming zones, the total amount of China’s biogas production will probably continue to decrease in the next decade [42].

5) GAS

The gas in this questionnaire includes liquefied petroleum gas, natural gas, and coal gas. In early 2021, the Central Document No. 1 on rural revitalization was officially released. When it comes to the construction of public infrastructure in the rural areas, it specifically mentions promoting gas to the countryside by supporting the construction of safe and reliable rural gas storage tank stations and micro-pipeline network gas supply systems. According to data from the China Urban and Rural Construction Statistical Yearbook, China’s rural gas penetration rate increased from 19.8% in 2013 to 28.6% in 2018, an increase of 8.8%, including a faster growth rate of 6.1% from 2016 to 2018. However, nationally, due to economic conditions, pipeline network facilities and other factors, the current level of rural gas development is still low, with penetration rates much lower than those in cities and towns, and there are obvious regional differences.

Jiangsu and Guangdong use gas for cooking are over 75%, and the energy used for cooking in rural households in coastal areas has been electric and gasified, while Yunnan is less than 30%. According to the data, the village gas penetration rate in China was 82.28% in 2019, among which the village gas penetration rates in Jiangsu and Guangdong were higher, at 83.28% and 63.16%, respectively, so the proportion of using gas for cooking in the region was also higher.

V. CONCLUSION AND OUTLOOK

Based on the big data of the Earth, this paper successfully calculates the proportion of the population in the south of the Yangtze River relying on clean cooking fuel and utilization technology by combining spatial analysis, questionnaire survey and statistical analysis. As a new technical solution and its application, the relevant conclusions and summary of the article are as follows:

Firstly, this paper uses the administrative division vector data, land use data, "LJ1-01" nighttime light remote sensing image and other big data of the earth in data selection. Secondly, in the sampling survey, the impact of different factors on the survey area is considered to increase the weight of the results. From the final result, the proportion of population relying on clean cooking fuel and utilization technology in Guizhou Province is far lower than that in Guangdong Province, which is in line with the current situation of inter-provincial economic development. Therefore, this paper takes into account the lack of data continuity at the micro level while using the Earth's big data to quantify regional science, and the results are more reliable.

Secondly, according to the survey and calculation, the percentage of the population using clean cooking energy and technologies in the south of the Yangtze River in China is 88.25%, with 89.81% in urban areas and 79.87% in rural areas. Based on the statistics, we found that the proportion of people using clean cooking fuels and technologies is generally higher in urban areas than in rural areas, as rural households prioritize affordability when choosing cooking fuels, while urban households also consider the convenience of energy use. The more developed the economy and the higher the per capita income, the higher the proportion of the population using clean cooking fuels. This suggests that the proportion of the population using clean cooking energy is related to various factors, such as geographical location, the economic development of the city and the income of the population.

Due to the limitation of time and data, the study area of this paper only includes the south of the Yangtze River in China. Later, the investigation and calculation will be carried out in the north of the Yangtze River, so as to obtain the results of the proportion of people who rely on clean cooking fuel and utilization technology in the country, using relevant models to select energy supplied by renewable energy [44], thus providing a scientific data basis for the relevant policies and plans of China's carbon peaking and carbon neutrality goals [33].

The methodology presented in this paper can be applied to other areas, such as combining Earth Big Data with remote sensing imagery of nighttime lights. This approach has the potential to accurately screen surveyed areas and obtain population data on electricity consumption. By utilising Earth Big Data, which includes various geospatial datasets such as satellite imagery, climate data and socio-economic indicators, we can gain a comprehensive understanding of the characteristics and dynamics of different regions. When combined with nighttime light imagery, we can effectively identify areas of high electricity use, and these images can provide insight into human activity and energy consumption patterns. Moreover, improving the accuracy of sample area identification contributes to the overall reliability and validity of questionnaire surveys. In the future, we will also consider combining image recognition technology with the data used in this study to more accurately distinguish urban and rural areas, as well as other types of land parcels, so that researchers and decision-makers can conduct more targeted surveys and conduct in-depth research targeting specific populations or geographical regions.

ACKNOWLEDGMENT

The authors would like to thank the teachers and students for their help with questionnaire collection and also gratefully acknowledge the residents participating in the questionnaire survey. They are also grateful to the editors and reviewers for carefully dealing with this article.

REFERENCES

- [1] *Global Energy Review 2021*, IEA, Paris, France, 2021.
- [2] W. Xiaohua, D. Chonglan, H. Xiaoyan, W. Weiming, J. Xiaoping, and J. Shangyun, "The influence of using biogas digesters on family energy consumption and its economic benefit in rural areas—Comparative study between lianshui and guichi in China," *Renew. Sustain. Energy Rev.*, vol. 11, no. 5, pp. 1018–1024, Jun. 2007, doi: [10.1016/j.rser.2005.08.001](https://doi.org/10.1016/j.rser.2005.08.001).
- [3] R. Wang and Z. Jiang, "Energy consumption in China's rural areas: A study based on the village energy survey," *J. Cleaner Prod.*, vol. 143, pp. 452–461, Feb. 2017, doi: [10.1016/j.jclepro.2016.12.090](https://doi.org/10.1016/j.jclepro.2016.12.090).
- [4] J. Fan, A. Ran, and X. Li, "A study on the factors affecting China's direct household carbon emission and comparison of regional differences," *Sustainability*, vol. 11, no. 18, p. 4919, Sep. 2019, doi: [10.3390/su11184919](https://doi.org/10.3390/su11184919).
- [5] B.-D. Hou, X. Tang, C. Ma, L. Liu, Y.-M. Wei, and H. Liao, "Cooking fuel choice in rural China: Results from microdata," *J. Cleaner Prod.*, vol. 142, pp. 538–547, Jan. 2017, doi: [10.1016/j.jclepro.2016.05.031](https://doi.org/10.1016/j.jclepro.2016.05.031).
- [6] C. Jana and S. C. Bhattacharya, "Sustainable cooking energy options for rural poor people in india: An empirical study," *Environ., Develop. Sustainability*, vol. 19, no. 3, pp. 921–937, Jun. 2017, doi: [10.1007/s10668-016-9774-y](https://doi.org/10.1007/s10668-016-9774-y).
- [7] A. Saha, M. A. Razzak, and M. R. Khan, "Electric cooking diary in bangladesh: Energy requirement, cost of cooking fuel, prospects, and challenges," *Energies*, vol. 14, no. 21, p. 6910, Oct. 2021, doi: [10.3390/en14216910](https://doi.org/10.3390/en14216910).
- [8] D. Y. Bisu, A. Kuhe, and H. A. Iortyer, "Urban household cooking energy choice: An example of bauchi metropolis, Nigeria," *Energy, Sustainability Soc.*, vol. 6, no. 1, p. 15, Dec. 2016, doi: [10.1186/s13705-016-0080-1](https://doi.org/10.1186/s13705-016-0080-1).
- [9] M. A. Twumasi, Y. Jiang, B. Addai, D. Asante, D. Liu, and Z. Ding, "Determinants of household choice of cooking energy and the effect of clean cooking energy consumption on household members' health status: The case of rural Ghana," *Sustain. Prod. Consumption*, vol. 28, pp. 484–495, Oct. 2021, doi: [10.1016/j.spc.2021.06.005](https://doi.org/10.1016/j.spc.2021.06.005).
- [10] V. L. Pandey and A. Chaubal, "Comprehending household cooking energy choice in rural India," *Biomass Bioenergy*, vol. 35, no. 11, pp. 4724–4731, Nov. 2011, doi: [10.1016/j.biombioe.2011.09.020](https://doi.org/10.1016/j.biombioe.2011.09.020).

- [11] R. DeFries and D. Pandey, "Urbanization, the energy ladder and forest transitions in India's emerging economy," *Land Use Policy*, vol. 27, no. 2, pp. 130–138, Apr. 2010, doi: [10.1016/j.landusepol.2009.07.003](https://doi.org/10.1016/j.landusepol.2009.07.003).
- [12] S. T. Amoah, "Determinants of household's choice of cooking energy in a global south city," *Energy Buildings*, vol. 196, pp. 103–111, Aug. 2019, doi: [10.1016/j.enbuild.2019.05.026](https://doi.org/10.1016/j.enbuild.2019.05.026).
- [13] D. Paudel, M. Jeuland, and S. P. Lohani, "Cooking-energy transition in nepal: Trend review," *Clean Energy*, vol. 5, no. 1, pp. 1–9, Mar. 2021, doi: [10.1093/ce/zkaa022](https://doi.org/10.1093/ce/zkaa022).
- [14] G. Shen et al., "Substantial transition to clean household energy mix in rural China," *Nat. Sci. Rev.*, vol. 9, no. 7, Jul. 2022, Art. no. nwac050, doi: [10.1093/nsr/nwac050](https://doi.org/10.1093/nsr/nwac050).
- [15] R. Lotfi, A. Gharehbaghi, M. S. Mehrjardi, K. Kheiri, and S. S. Ali, "A robust, resilience multi-criteria decision-making with risk approach: A case study for renewable energy location," *Environ. Sci. Pollut. Res.*, vol. 30, no. 15, pp. 43267–43278, Jan. 2023, doi: [10.1007/s11356-023-25223-1](https://doi.org/10.1007/s11356-023-25223-1).
- [16] *Energy Access Outlook 2017*, IEA, Paris, France, 2017.
- [17] S. Hu, D. Yan, S. Guo, Y. Cui, and B. Dong, "A survey on energy consumption and energy usage behavior of households and residential building in urban China," *Energy Buildings*, vol. 148, pp. 366–378, Aug. 2017, doi: [10.1016/j.enbuild.2017.03.064](https://doi.org/10.1016/j.enbuild.2017.03.064).
- [18] S. R. Khandker, D. F. Barnes, and H. A. Samad, "Are the energy poor also income poor? Evidence from India," *Energy Policy*, vol. 47, pp. 1–12, Aug. 2012, doi: [10.1016/j.enpol.2012.02.028](https://doi.org/10.1016/j.enpol.2012.02.028).
- [19] H. Zhong, K. Feng, L. Sun, L. Cheng, and K. Hubacek, "Household carbon and energy inequality in Latin American and Caribbean countries," *J. Environ. Manage.*, vol. 273, Nov. 2020, Art. no. 110979, doi: [10.1016/j.jenvman.2020.110979](https://doi.org/10.1016/j.jenvman.2020.110979).
- [20] T. T. Nguyen, T.-T. Nguyen, V.-N. Hoang, C. Wilson, and S. Managi, "Energy transition, poverty and inequality in Vietnam," *Energy Policy*, vol. 132, pp. 536–548, Sep. 2019, doi: [10.1016/j.enpol.2019.06.001](https://doi.org/10.1016/j.enpol.2019.06.001).
- [21] L. Guruswamy, "Energy justice and sustainable development," *Colorado J. Int. Environ. Law Policy*, vol. 21, no. 2, pp. 231–275, Feb. 2010.
- [22] S. Ma, X. Xu, C. Li, L. Zhang, and M. Sun, "Energy consumption inequality decrease with energy consumption increase: Evidence from rural China at micro scale," *Energy Policy*, vol. 159, Dec. 2021, Art. no. 112638.
- [23] J. Zhang, F. Teng, and S. Zhou, "The structural changes and determinants of household energy choices and energy consumption in urban China: Addressing the role of building type," *Energy Policy*, vol. 139, Apr. 2020, Art. no. 111314, doi: [10.1016/j.enpol.2020.111314](https://doi.org/10.1016/j.enpol.2020.111314).
- [24] S. Mao, S. Qiu, T. Li, M. Tang, H. Deng, and H. Zheng, "Using characteristic energy to study rural ethnic Minorities' household energy consumption and its impact factors in Chongqing, China," *Sustainability*, vol. 12, no. 17, p. 6898, Aug. 2020, doi: [10.3390/su12176898](https://doi.org/10.3390/su12176898).
- [25] Q. Li, J. Hu, and B. Yu, "Spatiotemporal patterns and influencing mechanism of urban residential energy consumption in China," *Energies*, vol. 14, no. 13, p. 3864, Jun. 2021, doi: [10.3390/en14133864](https://doi.org/10.3390/en14133864).
- [26] X. Shi, J. Yu, and T. S. Cheong, "Convergence and distribution dynamics of energy consumption among China's households," *Energy Policy*, vol. 142, Jul. 2020, Art. no. 111496, doi: [10.1016/j.enpol.2020.111496](https://doi.org/10.1016/j.enpol.2020.111496).
- [27] X. Zheng, C. Wei, P. Qin, J. Guo, Y. Yu, F. Song, and Z. Chen, "Characteristics of residential energy consumption in China: Findings from a household survey," *Energy Policy*, vol. 75, pp. 126–135, Dec. 2014, doi: [10.1016/j.enpol.2014.07.016](https://doi.org/10.1016/j.enpol.2014.07.016).
- [28] H. Zhang and M. Lahr, "Households' energy consumption change in China: A multi-regional perspective," *Sustainability*, vol. 10, no. 7, p. 2486, Jul. 2018, doi: [10.3390/su10072486](https://doi.org/10.3390/su10072486).
- [29] W. Xiaohua, L. Kunquan, L. Hua, B. Di, and L. Jingru, "Research on China's rural household energy consumption—Household investigation of typical counties in 8 economic zones," *Renew. Sustain. Energy Rev.*, vol. 68, pp. 28–32, Feb. 2017, doi: [10.1016/j.rser.2016.10.004](https://doi.org/10.1016/j.rser.2016.10.004).
- [30] J. Huang, W. Li, L. Guo, X. Hu, and J. W. Hall, "Renewable energy and household economy in rural China," *Renew. Energy*, vol. 155, pp. 669–676, Aug. 2020, doi: [10.1016/j.renene.2020.03.151](https://doi.org/10.1016/j.renene.2020.03.151).
- [31] X. Ma, M. Wang, D. Chen, and C. Li, "Energy choice in rural household cooking and heating: Influencing factors and transformation patterns," *Environ. Sci. Pollut. Res.*, vol. 28, no. 27, pp. 36727–36741, Jul. 2021, doi: [10.1007/s11356-021-13213-0](https://doi.org/10.1007/s11356-021-13213-0).
- [32] H. Phoumin and F. Kimura, "Cambodia's energy poverty and its effects on social wellbeing: Empirical evidence and policy implications," *Energy Policy*, vol. 132, pp. 283–289, Sep. 2019, doi: [10.1016/j.enpol.2019.05.032](https://doi.org/10.1016/j.enpol.2019.05.032).
- [33] *World Energy Outlook 2018*, IEA, Paris, France, 2018.
- [34] M. Nord and L. S. Kantor, "Seasonal variation in food insecurity is associated with heating and cooling costs among low-income elderly Americans," *J. Nutrition*, vol. 136, no. 11, pp. 2939–2944, Nov. 2006, doi: [10.1093/jn/136.11.2939](https://doi.org/10.1093/jn/136.11.2939).
- [35] L. P. Eichelberger, "Living in utility scarcity: Energy and water insecurity in northwest Alaska," *Amer. J. Public Health*, vol. 100, no. 6, pp. 1010–1018, Jun. 2010, doi: [10.2105/ajph.2009.160846](https://doi.org/10.2105/ajph.2009.160846).
- [36] A. Reddy, "Energy and social issues," in *World Energy Assessment: Energy and the Challenge of Sustainability*, 1th ed. New York, NY, USA: UNDP, 2000, ch. 2, pp. 39–58.
- [37] S. Wu, X. Zheng, C. You, and C. Wei, "Household energy consumption in rural China: Historical development, present pattern and policy implication," *J. Cleaner Prod.*, vol. 211, pp. 981–991, Feb. 2019, doi: [10.1016/j.jclepro.2018.11.265](https://doi.org/10.1016/j.jclepro.2018.11.265).
- [38] C. Ming, Z. Li, and T. Yi, "Analysis and evaluation on energy utilization of main crop straw resources in China," (in Chinese), *Trans. CSAE*, vol. 24, no. 12, pp. 291–296, 2008.
- [39] C. Hong, Y. Zong, Z. Li, M. Hai, W. Jiu, H. Li, Y. Yan, J. Ji, X. Teng, and W. Yun, "Distribution of crop straw resources and its industrial system and utilization path in China," (in Chinese), *Trans. Chin. Soc. Agricult. Eng.*, *Trans. CSAE*, vol. 35, no. 22, pp. 132–140, 2019, doi: [10.11975/j.j.issn.1002-6819.2019.22.015](https://doi.org/10.11975/j.j.issn.1002-6819.2019.22.015).
- [40] A. S. Giwa, N. Ali, I. Ahmad, M. Asif, R.-B. Guo, F.-L. Li, and M. Lu, "Prospects of China's biogas: Fundamentals, challenges and considerations," *Energy Rep.*, vol. 6, pp. 2973–2987, Nov. 2020, doi: [10.1016/j.egy.2020.10.027](https://doi.org/10.1016/j.egy.2020.10.027).
- [41] X. Jiang, S. G. Sommer, and K. V. Christensen, "A review of the biogas industry in China," *Energy Policy*, vol. 39, no. 10, pp. 6073–6081, Oct. 2011, doi: [10.1016/j.enpol.2011.07.007](https://doi.org/10.1016/j.enpol.2011.07.007).
- [42] L. Gu, Y.-X. Zhang, J.-Z. Wang, G. Chen, and H. Battye, "Where is the future of China's biogas? Review, forecast, and policy implications," *Petroleum Sci.*, vol. 13, no. 3, pp. 604–624, Aug. 2016, doi: [10.1007/s12182-016-0105-6](https://doi.org/10.1007/s12182-016-0105-6).
- [43] R. Lotfi, E. Haqiqat, M. S. Rajabi, and A. Hematyar, "Robust and resilience budget allocation for projects with a risk-averse approach: A case study in healthcare projects," *Comput. Ind. Eng.*, vol. 176, Feb. 2023, Art. no. 108948, doi: [10.1016/j.cie.2022.108948](https://doi.org/10.1016/j.cie.2022.108948).
- [44] R. Lotfi, S. G. Zare, A. Gharehbaghi, S. Nazari, and G.-W. Weber, "Robust optimization for energy-aware cryptocurrency farm location with renewable energy," *Comput. Ind. Eng.*, vol. 177, Mar. 2023, Art. no. 109009, doi: [10.1016/j.cie.2023.109009](https://doi.org/10.1016/j.cie.2023.109009).



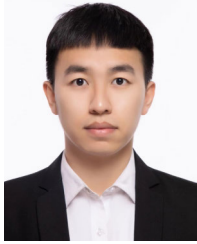
JIANPING PAN was born in Hefei, Anhui, in 1976. He received the B.E. degree from Southwest Jiaotong University, in 1999, the M.E. degree from the Chengdu University of Technology, in 2002, and the Ph.D. degree from Wuhan University, in 2005.

He is currently the Vice Dean and a Professor with the School of Smart City, Chongqing Jiaotong University. His research interests include the united nations sustainable development goals, earth big data, and remote sensing.



YUXIN YUAN was born in Chongqing, in 1999. She received the bachelor's degree in surveying and mapping engineering from Chongqing Jiaotong University, in 2021, where she is currently pursuing the master's degree with Chongqing Jiaotong University.

Her research interests include sustainable development and remote sensing.



ZHIHAO GUO was born in Hebei, in 1999. He received the B.E. degree from Shijiazhuang Railway University, in 2021. He is currently pursuing the master's degree with Chongqing Jiaotong University.



CHEN QI was born in Qinghai, China, in 1997. He received the B.E. degree from Southeast University, in 2020. He is currently pursuing the master's degree with Chongqing Jiaotong University.



MINGQUAN WU was born in 1983. He received the D.Sc. degree from the University of Chinese Academy of Sciences, in 2013.

He is currently an Associate Researcher with the Institute of Space and Astronomical Information Innovation, Chinese Academy of Sciences. His research interests include spatial and temporal fusion of multi-source remote sensing data and application of remote sensing monitoring of agricultural crops.



YIMENG LI was born in Sichuan, China, in 1999. He received the bachelor's degree from the China University of Mining and Technology, in 2022. He is currently pursuing the master's degree in engineering with Chongqing Jiaotong University.



HUIJUAN ZHANG is currently the Director of the Remote Sensing and Mapping Survey Institute, Ningxia Hui Autonomous Region, and provide remote sensing, land planning technical support and spatial geographic information services for natural resources, agriculture and forestry, water conservancy, urban construction, environmental protection and all sectors of society.

...