

RESEARCH ARTICLE

Estimation of Albacore Tuna Potential Fishing Grounds in the Southeastern Indian Ocean

SUCIADI CATUR NUGROHO^{1,2}, RIZA YULIRATNO SETIAWAN¹, MARTIWI DIAH SETIAWATI³, DJUMANTO¹, SUSILO BUDI PRIYONO¹, R. DWI SUSANTO^{4,5}, ANINDYA WIRASATRIYA^{5,6}, AND RAKHMA FITRIA LARASATI⁷

¹Department of Fisheries, Faculty of Agriculture, Universitas Gadjah Mada, Yogyakarta 55281, Indonesia

²Research Institute for Tuna Fisheries, Ministry of Marine Affairs and Fisheries Republic of Indonesia, Bali, Denpasar 80223, Indonesia

³Research Center for Oceanography, National Research and Innovation Agency (BRIN), Ancol Timur, Jakarta 14430, Indonesia

⁴Department of Atmospheric and Oceanic Science, University of Maryland, College Park, MD 20742, USA

⁵Department of Oceanography, Faculty of Fisheries and Marine Science, Diponegoro University, Semarang 50275, Indonesia

⁶Coastal and Ocean Remote Sensing Laboratory, Center for Coastal Rehabilitation and Disaster Mitigation Studies, Diponegoro University, Semarang 50275, Indonesia

⁷Politeknik Kelautan dan Perikanan Jembrana, Bali 82218, Indonesia

Corresponding author: Riza Yuliratno Setiawan (riza.y.setiawan@ugm.ac.id)

This work was supported by the Penelitian Dasar Universitas Gadjah Mada (UGM) 2022 under Grant 1712/UN1/DITLIT/Dit-Lit/PT.01.03/2022. The work of R. Dwi Susanto was supported in part by the United States' National Aeronautics and Space Administration (NASA) through the University of Maryland, College Park, USA, under Grant 80NSSC18K0777; and in part by the Adjunct Professor Program, Diponegoro University, Semarang, Indonesia. The work of Anindya Wirasatriya was supported by Universitas Diponegoro under the Scheme of High Reputation of International Publication Research under Grant 185-98/UN7.6.1/PP/2022.

ABSTRACT To maintain sustainable fisheries, albacore tuna is one of the commercial fish species whose management is regulated globally by the Regional Fisheries Management Organizations. Generally, sea surface temperature (SST) and chlorophyll-a (SSC) are used to determine fish suitability based on the catch data. In this research, we attempt to identify optimal habitats for albacore tuna in the southeastern Indian Ocean by analyzing in situ data based on onboard observers on tuna long line vessels from 2006–2019 and optimum interpolation sea surface temperature from NOAA-Advanced Very High-Resolution Radiometer and sea surface chlorophyll-a from Aqua MODIS satellites. The albacore tuna's habitat suitability index was examined using the generalized additive model. The results suggested that albacore tuna inhabited waters with an SST range of 15–26 °C and SSC concentration of 0.075–0.125 mg/m³. In the Indian Ocean, most albacore tunas were captured at higher latitudes of 20°–30° S.

INDEX TERMS Albacore tuna, chlorophyll-a, sea surface temperature, habitat suitability, Indian Ocean.

I. INTRODUCTION

Since the 1950s, global tuna catches have expanded dramatically, from approximately 500,000 tons to approximately 5,100,000 tons in 2018 [1]. The Pacific Ocean has the highest tuna capture, accounting for 65% of the entire global harvest, followed by the Indian Ocean (21%) and the Atlantic Ocean (11%) [1]. The average tuna capture in the Indian Ocean over the past five years (2014–2018) has been approximately 1 million tons, composed of skipjack (46.8%), yellowfin (40.5%), bigeye (9%), and albacore (3.7%) [2].

In the Indian Ocean, albacores account for the smallest proportion of the catches among the tunas. However, it is one

of the important target species in commercial tuna fisheries, as indicated by the continued increase in the albacore catch in the Indian Ocean from around 3,000 tons in 1950 to 41,000 tons in 2018 [2]. The species is found in tropical and subtropical seas up to 40°S [3]. Albacores in the Indian Ocean are caught using tuna longline fishing gear. Despite the species not having been overfished yet, the status of the species is already at a level that starts to threaten the sustainability of the resource [4].

The Indian Ocean is one of the most profitable tuna fishing regions and has a long history of albacore fishing. However, information about the relationship between oceanographic conditions and the abundance of albacore has not been widely known. One of the obstacles experienced by Indonesian fishermen while attempting to catch albacore is

The associate editor coordinating the review of this manuscript and approving it for publication was Geng-Ming Jiang.

their inadequate ability to determine the correct fishing spots or potential fishing grounds (PFGs). PFGs can be estimated by analyzing oceanographic parameters such as sea surface temperature (SST) and sea surface chlorophyll-a (SSC) concentration. One of the data that may be utilized to define PFGs is remote sensing data, which can be examined further using geographic information system (GIS) technology and the generalized additive model (GAM) statistical method to identify fish habitats. GAM analysis has proven reliable for identifying PFGs. [5] created GAM for the first time in 1986. In earlier research, the model has been used to estimate PFGs for *Sardina pilchardus* [6], tuna [7], swordfish [8], and salmon [9].

In the Indian Ocean, PFGs for bigeye tuna have been estimated using GAM [10]. According to [10], the PFGs of bigeye tuna were at SSTs between 24.8° and 28.7°C and SSC concentrations between 0.05 and 0.17 mg/m³. GAM has been used to characterize bigeye catch south of Java [11]. However, as far as we know, there is no GAM-based research on the estimation of albacore PFGs in the Indian Ocean. In this study, we aim to investigate the characteristics of albacore tuna habitat in the southeastern Indian Ocean based on ocean surface conditions and tuna catch data collected over 14 years using GAM method. The findings of this research can assist fishermen in locating productive fishing spots.

II. MATERIALS AND METHODS

A. STUDY SITE

The studied area is in the southeastern Indian Ocean, 0°-35°S and 75°-122°E (Fig. 1).

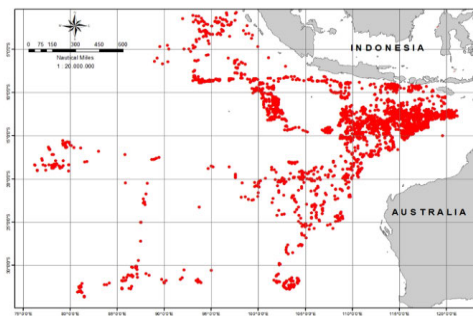


FIGURE 1. Map of the investigated area. Red dots denote the albacore fishing location.

B. CATCH DATA

The data on albacore tuna catch was obtained through direct recording activities on the vessels carried out by the observers of the Research Institute for Tuna Fisheries, the Ministry of Marine Affairs and Fisheries of the Republic of Indonesia. Data collection activities were carried out on tuna longline fishing in the Indian Ocean from 2006–2019. The data consisted of the total catches of albacore tuna, the coordinates of the fishing location, the fishing times, and the specifications of fishing gear. All collected information was compiled into a monthly database.

C. REMOTE SENSING DATA

The daily gridded optimum interpolation of SST from the NOAA Advanced Very High-Resolution Radiometer (<https://www.ncei.noaa.gov/>) and SSC from the Aqua Moderate Imaging Spectroradiometer (MODIS) (<https://oceancolor.gsfc.nasa.gov/>) were analyzed to describe ocean surface variability from January 2006 to December 2019 in the region of interest. We extracted daily SST and SSC from each pixel per the locations of albacore tuna fishing activities. The results were then used to analyze the habitat suitability of the albacore tuna using GAM.

D. CATCH PER UNIT EFFORT ANALYSIS

The analyzed fishery data included the daily capture of albacore tuna, the number of hooks, and the fishing sites. The daily data were compiled into monthly data. In addition, the fish abundance index was represented in terms of the Catch Per Unit Effort (CPUE) of tuna longline, or the number of tunas taken per one thousand fishing hooks, using the following formula [12]:

$$CPUE = \frac{E}{P} \times 1000 \quad (1)$$

where E is the total individual albacore tuna caught, and P is the total hooks used.

CPUE is an abundance index used to determine the fishing resource exploitation rate in an aquatic area [13]. In this research, CPUE was regarded as an indicator of fish availability for tuna longline fishing gear in a particular area. The calculation of CPUE was utilized to predict the fishing grounds using a GAM.

Classification of fisheries data is very useful for inferring the type of fish catch data and for determining the optimum range of oceanographic parameters and the highest catch period [10], [14], [15]. Following [14], we divided the fish catch data into three groups: (i) null catches – cases with CPUE equal to zero (1126 observations), (ii) positive catches – cases with CPUE greater than zero and less than 3.7 individual/1000 hooks (1114 observations), and (iii) high catches – cases with CPUE equal to or greater than 3.7 individual/1000 hooks (751 observations). The threshold value of a high catch number (3.7) was determined based on the lower limit of the upper quartile (Q3). The Q3 was obtained from 2991 observational data.

E. GENERALIZED ADDITIVE MODEL (GAM)

GAM is an alternative statistical model that can be used for linear and non-linear relationships and is frequently employed in habitat modeling [16]. The advantage of this statistical model is that it permits the investigation of non-parametric relationships. More generally, it can be applied to data sets with non-Gaussian distributions, including binomial, Poisson, and gamma distributions [10]. GAM uses a smoothing curve function to model the relationship between the catches (response variable) and the oceanographic variable (predictor variables) [17], [18], [19].

GAM was developed using the *mgcv* packages library in the R software [20], where the CPUE was the response variable, while SST and chlorophyll-a were the predictor variables. Predictor variables that influence the fishing grounds are selected based on the Akaike's Information Criteria (AIC) value, the Deviance Explained (DE) value, and the largest level of significance (P-value) of each developed GAM [21]. AIC is the residual error in a simple linear regression, whereas DE is the coefficient of determination (R^2). The *mgcv* package 'Predict GAM' uses the following equation to develop GAM.

$$g(\mu_i) = \alpha_0 + f_1(x_{1i}) + f_2(x_{2i}) + f_3(x_{3i}) + \dots + f_n(x_{ni}) \quad (2)$$

where g is the link function, μ_i is the response variable, α_0 is the model constant, x_n is the developed parameter, and f_n is the spline smooth factor function of each predictive variable.

The developed model will have AIC and DE values where each variable has its significance value (P-value). The model with the smallest AIC and the largest DE value is the best and is selected. On the other hand, the predictor variable with the smallest significance value is determined as the variable with the strongest influence on the response variable. The optimal values of each predictor variable (SST and SSC) determined by GAM are used as the main parameters to predict the habitats of albacore tuna.

F. HABITAT SUITABILITY INDEX (HSI)

The habitat suitability index (HSI) is a numerical index between 0 and 1, where 0 indicates unsuitable habitat and 1 is the optimal habitat. This index represents the capacity of habitat to support a particular species with output [10]. The output of the HSI analysis is a map of suitable albacore habitats. This study used ArcGIS's raster calculator function in the spatial analysis tool to process the HSI. The habitat factors based on GAM were combined using the additive priority function P , as shown in the following equation [22].

$$P = \sum_{i=1}^m ai \quad (3)$$

where P is the HSI, m is the number of factors, and ai is the relatively important factor of ' i '. In this case, ' i ' is SST and SSC, where ' a ' is the weighted value of each variable. The weighted value is calculated based on the proportion of essential habitat predictors for albacore tunas by GAM results.

III. RESULTS AND DISCUSSION

Albacore tuna is one of the fish resources that many Indonesian fishermen hunt. Many of them return from their fishing trips with only a few fish. Hence, it is crucial to understand the habitat preferences of the target species. Fishery information is essential for analyzing the parameters of fish habitat.

The CPUE of albacore tuna changed annually over the observation period, with the highest rate in 2012

(4 individuals/1000 hooks) and the lowest rate in 2017 (1 individual/1000 hooks) (Fig. 2). CPUE of above three individuals/1000 hooks were found in 2010, 2012, 2013, 2014, 2016, 2018, and 2019. On the other hand, in 2007, 2008, and 2011, the CPUE was around two individuals/1000 hooks. In 2006, 2009, 2015, and 2017, the rates were only around one individual/1000 hooks.

The highest CPUE of albacore tuna in the southeastern Indian Ocean occurred from April–July, as indicated in Fig. 3. In contrast, the low CPUE occurred from January to February and from September–November. We postulate that this might be an effect of seasonal reversal of easterly wind-induced upwelling along the southern coasts of the Lesser Sunda Islands from Bali to Timor (i.e., [23], [24], [25], [26]) and the enhancement of the South Equatorial Current during March–May, characterized by SST cooling [27], [28], [29].

The CPUE of albacore tuna indicated an increasing trend towards the high latitudes (Fig. 4). The highest CPUE were observed at latitudes of 31° – 35° S (7 individuals/1,000 hooks) (Fig. 4) and longitudes of 80° – 85° E (11 individuals/1,000 hooks) (Fig. 5).

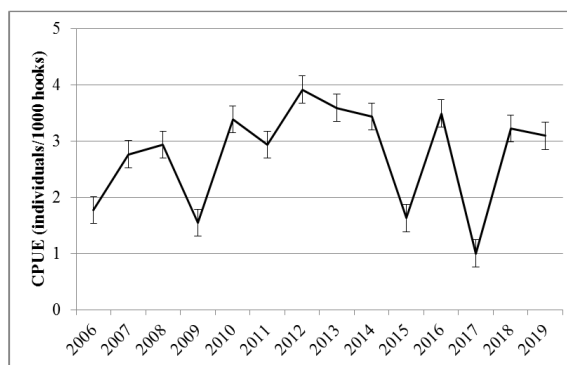


FIGURE 2. Annual average of CPUE of albacore tuna in the study area.

SST and SSC played a role in albacore tuna fishing. The highest CPUE corresponded to SST of 17°C (Fig. 6) and SSC concentration of 0.3 mg/m^3 (Fig. 7). Fig. 8 illustrates the habitat features of albacore tuna using GAM. The x-axis represents the explanatory variable, while the y-axis shows a more subtle influence on the associated value. The solid line indicates the observed data points, whereas the dashed line indicates the 95% confidence interval for each predictor variable. The zero value of the y-axis suggests no influence from the parameter. The percentage was higher when the developed GAM function was above the zero axis, indicating a strong influence from the parameter, while below the zero axis indicated the parameter's weak influence on the albacore tuna CPUE.

The results of GAM suggest that SSTs $>25^\circ\text{C}$ had no effect on the CPUE of albacore tuna in the southeastern Indian Ocean. A positive influence was found for SST of 15° – 26° (Fig. 8a). SSC concentration $<0.125 \text{ mg/m}^3$ had the greatest influence on the CPUE of albacore tuna (Fig. 8b). Furthermore, GAM analysis suggests that latitudes of 20° – 30° S

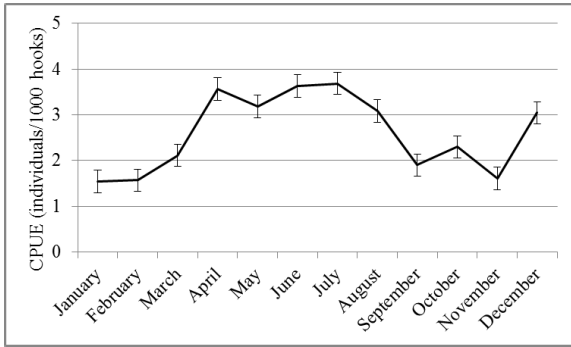


FIGURE 3. Monthly climatology (2006-2019) of CPUE albacore tuna in the study area.

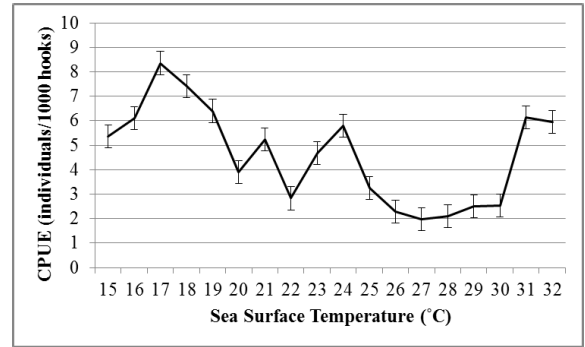


FIGURE 6. Relationship between albacore tuna CPUE and SST.

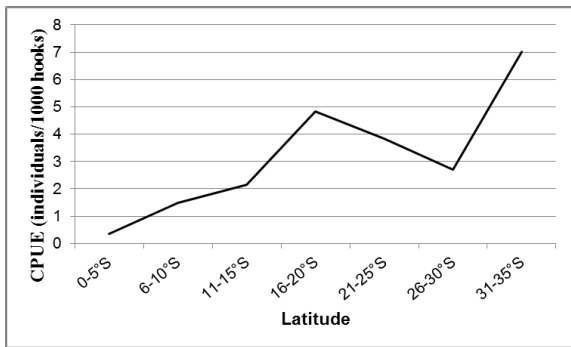


FIGURE 4. CPUE of albacore tuna (2006-2019) in the study area as a function of latitude.

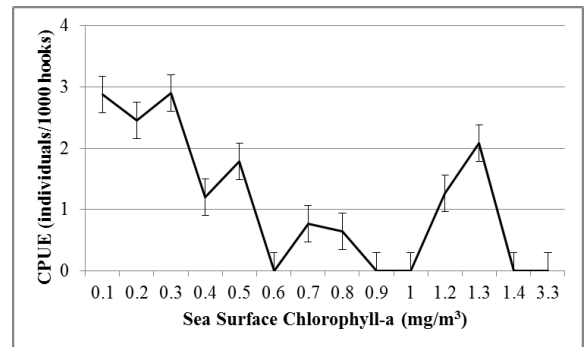


FIGURE 7. Relationship between albacore tuna CPUE and surface chlorophyll-a concentration.

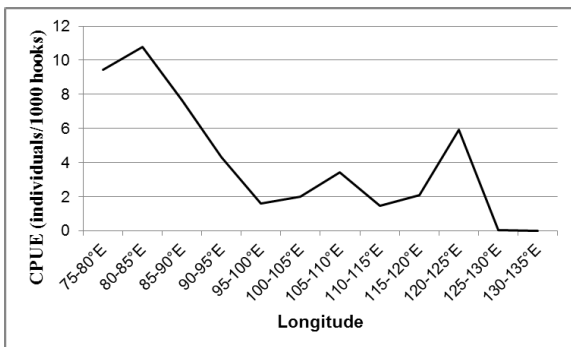


FIGURE 5. CPUE of albacore tuna (2006-2019) in the study area as a function of longitude.

Our findings also indicated that the fishing site significantly impacted the albacore tuna catches in the southeastern Indian Ocean.

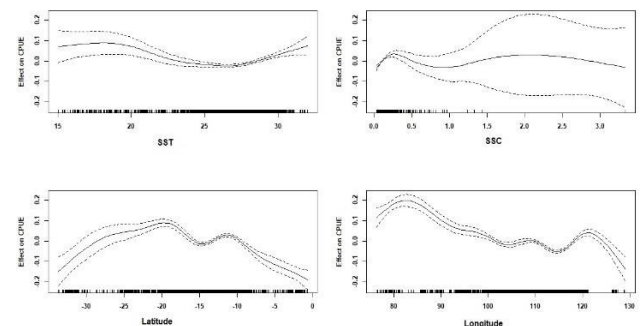


FIGURE 8. GAM analyses between albacore tuna CPUE and (a) SST, (b) surface chlorophyll-a concentration, (c) latitude, and (d) longitude.

(Fig. 8c) and longitude > 100°E (Fig. 8d) demonstrated strong influences on the CPUE. The longitudes of 120°–125°E also affected albacore tuna fishing; however, the data were limited.

The best model was selected based on the smallest AIC and the largest DE values (Table 1). The AIC values indicate how much information the GAM model loses when forecasting habitat suitability areas, whereas the DE values indicate how well the GAM model represented or explained the CPUE data. Table 1 suggests that SST and SSC influenced the habitats of albacore tuna in the southeastern Indian Ocean, with SST played a bigger role than SSC concentration as its DE was higher and its AIC was lower than those of SSC.

The CPUE of albacore tuna in the southeastern Indian Ocean was affected by the SST range of 15°–26°C. According to [30], the SST range of 17°–21°C was the main factor influencing the distribution of albacore tuna in the southern Indian Ocean. The CPUE was also influenced by low surface chlorophyll-a concentration of 0.07–0.125 mg/m³. Because albacore tuna eats secondary producers such as fish [31], [32], shrimp, squid, and octopus [33], chlorophyll-a is not

TABLE 1. Habitat characteristics of albacore tuna.

Model	Variable	P-Value	DE	AIC	edf
SST	SST	<0.001 ***	8.16%	2528. 401	7.017
SSC	SSC	<0.001 ***	3.08%	2693. 041	8.784
SST+SSC	SST	<0.001 ***	9.58%	2498. 957	6.907
	SSC	<0.001 ***			8.745
Lat+Lon	Lat	<0.001 ***	27.8%	1828. 527	8.515
	Lon	<0.001 ***			8.814

Note; edf – degree of freedom

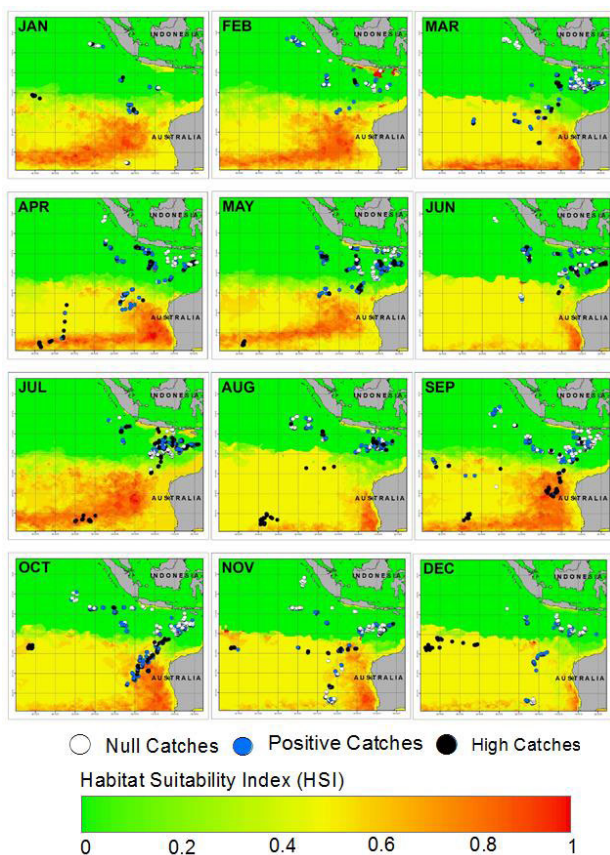


FIGURE 9. Map of habitat suitability areas and albacore fishing locations in the southeastern Indian Ocean.

directly related to the species. It takes time for secondary producers to reach high-chlorophyll areas and even longer for albacore tuna to reach secondary producers’ areas. This result is consistent with an earlier study by [3] that suggests albacore tuna preferred a low chlorophyll-a concentration (0.11–0.22 mg/m³).

Fig. 9 depicts the suitability of the albacore tuna habitat, with red indicating ideal habitats, yellow indicating moderate suitability, and green indicating an unsuitable envi-

ronment. We found that most fishing activities occurred in the green area, which has environments unsuitable for albacore. However, some fishing activities were located in the suitable habitat from July to December. Moreover, the ocean region of 20°-30°S was the most suitable area for the habitats of albacore tuna. A study by [34] also found that the suitable habitat for albacore tuna in the southern Indian Ocean is at latitudes of 20°-40° S with CPUE of > 12 individual/1000 hooks. A good accordance between CPUE and latitude position revealed that the CPUE continued to rise as one traveled further south. According to the examination of CPUE and longitude coordinates, the western side of the investigated area possessed a high CPUE. Overall, the results of this study suggest that numerous fishing operations were conducted in the green area, i.e., areas with poor to no suitability, and this led to financial losses for fishermen due to high operational costs and minimal catches.

IV. CONCLUSION

Sea surface temperature, surface chlorophyll-a, and in situ observation/logbook data from 2006 to 2019 were analyzed using GAM statistical method to determine the potential fishing grounds of albacore tuna in the southeastern Indian Ocean from 0° to 35°S and 75° to 122°E. We found that oceanographic conditions significantly affected the CPUE of albacore tuna. The species preferred an SST range of 15°-26°C and a chlorophyll-a concentration of 0.075-0.125 mg/m³. The albacore tuna habitat suitability index indicated that the fishing potential locations were between 20° and 30° S, which is in line with the logbook data trend of the fishing location.

Our results help narrow down the locations of suitable fishing ground of albacore tuna in the southeastern Indian Ocean. Given that various oceanographic parameters can be measured from satellites, this research was a first step toward more comprehensive proxy for albacore tuna. In the future, the study can be expanded to include other oceanographic data such sea surface salinity, sea surface height, winds, and in combination with ocean modelling to get profiles of salinity, temperature, density, and current that varies with depths. Finally, our research may help the government or decision makers on sustainable fisheries management.

ACKNOWLEDGMENT

The authors would like to thank NOAA and NASA for providing data. RYS would like to thank Venny S. W. Nasution and Herlambang A. Rachman for their supports. R. Dwi Susanto is supported by NASA grant #80NSSC18K0777 through the University of Maryland, College Park, USA and the Adjunct Professor Program, Universitas Diponegoro. Anindya Wirasatriya is supported by Universitas Diponegoro under the scheme of High reputation of International Publication Research (Grant 185-98/UN7.6.1/PP/2022).

REFERENCES

[1] Status of the World Fisheries for Tuna, Int. Seafood Sustainability Found., Washington, DC, USA, Mar. 2020.

- [2] Report of the 22nd Session of the IOTC Scientific Committee, Indian Ocean Tuna Commission, Karachi, Pakistan, IOTC-2019-SC22-R[E], Dec. 2019, pp. 2–6.
- [3] H. Arrizabalaga, F. Dufour, L. Kell, G. Merino, L. Ibaibarriaga, G. Chust, X. Irigoien, J. Santiago, H. Murua, I. Fraile, M. Chifflet, N. Goikoetxea, Y. Sagaramina, O. Aumont, L. Bopp, M. Herrera, J. M. Fromentin, and S. Bonhommeau, “Global habitat preferences of commercially valuable tuna,” *Deep Sea Res. II, Topical Stud. Oceanogr.*, vol. 113, pp. 102–112, Mar. 2015, doi: [10.1016/j.dsr2.2014.07.001](https://doi.org/10.1016/j.dsr2.2014.07.001).
- [4] M. G. Burgess, S. Polasky, and D. Tilman, “Predicting overfishing and extinction threats in multispecies fisheries,” *Proc. Nat. Acad. Sci. USA*, vol. 110, no. 40, pp. 15943–15948, Sep. 2013, doi: [10.1073/pnas.1314472110](https://doi.org/10.1073/pnas.1314472110).
- [5] T. J. Hastie and R. J. Tibshirani, *Generalized Additive Models*. London, U.K.: Chapman Hall, 1990, p. 352.
- [6] M. Giannoulaki, M. M. Pyrounaki, B. Liorzou, I. Leonori, V. D. Valavanis, K. Tsagarakis, J. L. Bigot, D. Roos, A. De Felice, F. Campanella, S. Somarakis, E. Arneri, and A. Machias, “Habitat suitability modelling for sardine juveniles (*Sardina pilchardus*) in the Mediterranean Sea,” *Fisheries Oceanogr.*, vol. 20, no. 5, pp. 367–382, Jul. 2011, doi: [10.1111/j.1365-2419.2011.00590.x](https://doi.org/10.1111/j.1365-2419.2011.00590.x).
- [7] K.-W. Yen, H.-J. Lu, Y. Chang, and M.-A. Lee, “Using remote-sensing data to detect habitat suitability for yellowfin tuna in the western and central Pacific ocean,” *Int. J. Remote Sens.*, vol. 33, no. 23, pp. 7507–7522, Dec. 2012, doi: [10.1080/01431161.2012.685973](https://doi.org/10.1080/01431161.2012.685973).
- [8] Y. J. Chang, C. L. Sun, Y. Chen, S. Z. Yeh, and G. Dinardo, “Habitat suitability analysis and identification of potential fishing grounds for swordfish, *Xiphias gladius*, in the south Atlantic Ocean,” *Int. J. Remote Sens.*, vol. 33, no. 23, pp. 7523–7541, Dec. 2012, doi: [10.1080/01431161.2012.685980](https://doi.org/10.1080/01431161.2012.685980).
- [9] S. Fukuda, B. De Baets, W. Waegeman, J. Verwaeren, and A. M. Mouton, “Habitat prediction and knowledge extraction for spawning European grayling (*Thymallus thymallus* L.) using a broad range of species distribution models,” *Environ. Model. Softw.*, vol. 47, pp. 1–6, Sep. 2013, doi: [10.1016/j.envsoft.2013.04.005](https://doi.org/10.1016/j.envsoft.2013.04.005).
- [10] M. D. Setiawati, A. B. Sambah, F. Miura, T. Tanaka, and A. R. As-Syakur, “Characterization of bigeye tuna habitat in the southern waters off Java–Bali using remote sensing data,” *Adv. Space Res.*, vol. 55, no. 2, pp. 732–746, Jan. 2015, doi: [10.1016/j.asr.2014.10.007](https://doi.org/10.1016/j.asr.2014.10.007).
- [11] M. L. Syamsuddin, S.-I. Saitoh, T. Hirawake, S. Bachri, and A. B. Harto, “Effects of el Niño–Southern oscillation events on catches of bigeye tuna (*Thunnus obesus*) in the eastern Indian ocean off Java,” *Fishery Bull.*, vol. 111, no. 2, pp. 175–188, Mar. 2013, doi: [10.7755/FB.111.2.5](https://doi.org/10.7755/FB.111.2.5).
- [12] B. Nugraha, “Tuna longline fisheries productivity in Benoa (case study: PT. Perikanan Nusantara) (in Bahasa Indonesia),” *Mar. Fisheries*, vol. 3, no. 2, pp. 135–140, Nov. 2012, doi: [10.29244/jmf.3.2.135-140](https://doi.org/10.29244/jmf.3.2.135-140).
- [13] A. Bahtiar, A. Barata, and D. Novianto, “Distribution of the hook rate of tuna longline in the Indian Ocean (in Bahasa Indonesia),” *Jurnal Penelitian Perikanan Indonesia*, vol. 19, no. 4, pp. 195–202, Dec. 2013, doi: [10.15578/jppi.19.4.2013.195-202](https://doi.org/10.15578/jppi.19.4.2013.195-202).
- [14] H. A. Andrade and C. A. E. Garcia, “Skipjack tuna fishery in relation to sea surface temperature off the southern Brazilian coast,” *Fisheries Oceanogr.*, vol. 8, no. 4, pp. 245–254, Dec. 2001, doi: [10.1046/j.1365-2419.1999.00107.x](https://doi.org/10.1046/j.1365-2419.1999.00107.x).
- [15] M. Zainuddin, K. Saitoh, and S.-I. Saitoh, “Albacore (*Thunnus alalunga*) fishing ground in relation to oceanographic conditions in the western north Pacific ocean using remotely sensed satellite data,” *Fisheries Oceanogr.*, vol. 17, no. 2, pp. 61–73, Mar. 2008, doi: [10.1111/j.1365-2419.2008.00461.x](https://doi.org/10.1111/j.1365-2419.2008.00461.x).
- [16] A. Guisan and N. E. Zimmermann, “Predictive habitat distribution models in ecology,” *Ecol. Modelling*, vol. 135, nos. 2–3, pp. 147–186, Dec. 2000, doi: [10.1016/S0304-3800\(00\)00354-9](https://doi.org/10.1016/S0304-3800(00)00354-9).
- [17] E. Susilo and T. A. Wibawa, “Utilization of satellite oceanography data to predict lemuru fishing ground based on food chain and statistical GAM approach,” *Jurnal Kelautan Nasional*, vol. 11, no. 2, pp. 77–87, Jan. 2017, doi: [10.15578/jkn.v11i2.6109](https://doi.org/10.15578/jkn.v11i2.6109).
- [18] R. Hidayat, M. Zainuddin, A. Mallawa, M. A. Mustapha, and A. R. S. Putri, “Mapping spatial–temporal skipjack tuna habitat as a reference for fish aggregating devices (FADs) settings in Makassar strait, Indonesia,” *Biodiversitas J. Biol. Diversity*, vol. 22, no. 9, pp. 3637–3647, Aug. 2021, doi: [10.13057/biodiv/d220905](https://doi.org/10.13057/biodiv/d220905).
- [19] E. S. Y. Siregar, V. P. Siregar, and S. B. Agus, “Fishing ground analysis of yellowfin tuna *Thunnus albacares* in West Sumatera waters based on GAM model (in Bahasa Indonesia),” *Jurnal Ilmu dan Teknologi Kelautan Tropis*, vol. 10, no. 2, pp. 501–516, Aug. 2018, doi: [10.29244/jitkt.v10i2.21908](https://doi.org/10.29244/jitkt.v10i2.21908).
- [20] S. N. Wood, *Generalized Additive Models: An Introduction With R*, 2nd ed. London, U.K.: Chapman Hall, 2017, p. 496.
- [21] R. Mugo, S. I. Saitoh, A. Nihira, and T. Kuroyama, “Habitat characteristics of skipjack tuna (*Katsuwonus pelamis*) in the Western North Pacific,” *Fisheries Oceanogr.*, vol. 19, no. 5, pp. 382–396, Sep. 2010, doi: [10.1111/j.1365-2419.2010.00552.x](https://doi.org/10.1111/j.1365-2419.2010.00552.x).
- [22] R. Store and J. Jokimaki, “A GIS based multi-scale approach to habitat suitability modeling,” *Ecol. Model.*, vol. 169, no. 1, pp. 1–15, Nov. 2003, doi: [10.1016/S0304-3800\(03\)00203-5](https://doi.org/10.1016/S0304-3800(03)00203-5).
- [23] R. D. Susanto, A. L. Gordon, and Q. Zheng, “Upwelling along the coasts of Java and Sumatra and its relation to ENSO,” *Geophys. Res. Lett.*, vol. 28, no. 8, pp. 1599–1602, Apr. 2001, doi: [10.1029/2000GL011844](https://doi.org/10.1029/2000GL011844).
- [24] A. Wirasatriya, J. D. Setiawan, D. N. Sugianto, I. A. Rosyadi, H. Haryadi, G. Winarso, R. Y. Setiawan, and R. D. Susanto, “Ekman dynamics variability along the southern coast of Java revealed by satellite data,” *Int. J. Remote Sens.*, vol. 41, no. 21, pp. 8475–8496, Aug. 2020, doi: [10.1080/01431161.2020.1797215](https://doi.org/10.1080/01431161.2020.1797215).
- [25] R. Y. Setiawan, E. Setyobudi, A. Wirasatriya, A. S. Muttaqin, and L. Maslukah, “The influence of seasonal and interannual variability on surface chlorophyll—A off the western lesser sunda islands,” *IEEE J. Sel. Topics Appl. Earth Observ. Remote Sens.*, vol. 12, no. 11, pp. 4191–4197, Nov. 2019, doi: [10.1109/JSTARS.2019.2948385](https://doi.org/10.1109/JSTARS.2019.2948385).
- [26] M. Syamsuddin, S.-I. Saitoh, T. Hirawake, F. Syamsudin, and M. Zainuddin, “Interannual variation of bigeye tuna (*Thunnus obesus*) hotspots in the eastern Indian ocean off Java,” *Int. J. Remote Sens.*, vol. 37, no. 9, pp. 2087–2100, Jan. 2016, doi: [10.1080/01431161.2015.1136451](https://doi.org/10.1080/01431161.2015.1136451).
- [27] P. Dipo, I. W. Nurjaya, and F. Syamsudin, “Characteristic of physical oceanography in East Indian Ocean during positive phase of Indian Ocean Dipole (IOD) of 1994/1995, 1997/1998, and 2006/2007 (in Bahasa Indonesia),” *Jurnal Ilmu dan Teknologi Kelautan Tropis*, vol. 3, no. 2, pp. 71–84, Dec. 2011, doi: [10.29244/jitkt.v3i2.7823](https://doi.org/10.29244/jitkt.v3i2.7823).
- [28] D. Oktaviani, G. Handoyo, M. Helmi, Kunarso and A. Wirasatriya, “Upwelling characteristics in the positive Indian Ocean Dipole (IOD) period in the Southern Waters of West Java (in Indonesia),” *Indonesian J. Oceanography*, vol. 3, no. 4, pp. 23–30, Nov. 2021, doi: [10.14710/ijoc.v3i4.12081](https://doi.org/10.14710/ijoc.v3i4.12081).
- [29] K. Amri, D. Manurung, J. L. Gaol, and M. S. Baskoro, “Characteristics of sea surface temperature and the occurrence of positive mode Indian Ocean Dipole upwelling in western Sumatra and southern West Java (in Bahasa Indonesia),” *Jurnal Segara*, vol. 9, no. 1, pp. 23–35, Jul. 2013.
- [30] M.-A. Lee, A. H. Vayghan, D.-C. Liu, and W.-C. Yang, “Potential and prospective seasonal distribution of hotspot habitat of albacore tuna (*thunnus alalunga*) in the south Indian ocean using the satellite data,” in *Proc. IEEE Int. Geosci. Remote Sens. Symp. (IGARSS)*, Jul. 2017, pp. 5747–5750, doi: [10.1109/IGARSS.2017.8128313](https://doi.org/10.1109/IGARSS.2017.8128313).
- [31] T. Nishida and M. Tanaka, “General review of Indian Ocean albacore (*Thunnus alalunga*),” in *Proc. 1st Session Workshop Party Temperate Tuna*, Shimizu, Japan, Jan. 2004, p. 8.
- [32] L. Xu and S. Q. Tian, “A study of fisheries biology for albacore based on Chinese observer data,” in *Proc. 3rd Session Work. Party Temperate Tuna*, Busan, South Korea, Sep. 2011, pp. 3–11.
- [33] X. Chen, G. Li, B. Feng, and S. Tian, “Habitat suitability index of chub mackerel (*Scomber japonicus*) from July to September in the east China sea,” *J. Oceanogr.*, vol. 65, no. 1, pp. 93–102, Feb. 2009, doi: [10.1007/s10872-009-0009-9](https://doi.org/10.1007/s10872-009-0009-9).
- [34] S. Mondal, A. H. Vayghan, M.-A. Lee, Y.-C. Wang, and B. Semedi, “Habitat suitability modeling for the feeding ground of immature albacore in the southern Indian ocean using satellite-derived sea surface temperature and chlorophyll data,” *Remote Sens.*, vol. 13, no. 14, p. 2669, Jul. 2021, doi: [10.3390/rs13142669](https://doi.org/10.3390/rs13142669).



SUCIADI CATUR NUGROHO received the B.Sc. degree in marine science and technology from IPB University, in 2009. He is currently pursuing the master’s degree with the Department of Fisheries, Faculty of Agriculture, Gadjah Mada University, Yogyakarta, Indonesia. He works as a Junior Researcher at the Research Institute Tuna Fisheries, Ministry of Marine Affairs and Fisheries of the Republic of Indonesia.



RIZA YULIRATNO SETIAWAN received the M.Sc. degree from the Department of Geophysics, Graduate School of Science, Tohoku University, Japan, in 2008, and the Ph.D. degree from the Faculty of Geosciences, University of Bremen, Germany, in 2015. He is currently a Faculty Staff at the Department of Fisheries, Faculty of Agriculture, Universitas Gadjah Mada, Yogyakarta, Indonesia. He has been working on scientific analyses of remote sensing and observational data to understand mesoscale atmosphere-ocean-land interaction in the Indonesian seas.



MARTIWI DIAH SETIAWATI received the B.Sc. degree from IPB University, Indonesia, in 2009, and the M.Sc. and Ph.D. degrees from Yamaguchi University, Japan, in 2012 and 2015, respectively. She is currently a Scientist at the Research Center for Oceanography, National Research and Innovation Agency (BRIN), Indonesia. Her expertise includes sustainability assessment, GIS, remote sensing, and modeling.



DJUMANTO received the B.Sc. degree in fisheries science from IPB University, in 1987, the M.Sc. degree from the Asian Institute of Technology, Thailand, in 1993, and the Ph.D. degree from Ehime University, Japan, in 2005. He is currently a Faculty Staff at the Department of Fisheries, Faculty of Agriculture, Universitas Gadjah Mada, Yogyakarta, Indonesia. His research interests include fish dynamics in marine and freshwater ecosystems.



SUSILO BUDI PRIYONO received the B.Sc., M.Sc., and Ph.D. degrees from Universitas Gadjah Mada, Indonesia, in 1993, 2005, and 2020, respectively. He is currently the Head of Study Program of Aquaculture, Department of Fisheries, Faculty of Agriculture, Universitas Gadjah Mada. His expertise covers smart aquaculture and GIS.



R. DWI SUSANTO received the bachelor's degree from the Bandung Institute of Technology, Indonesia, in 1986, the dual master's degree in engineering science from Louisiana State University, in 1992, and the MIT Ocean Engineering Department (underwater acoustics), in 1994, and the Ph.D. degree from the College of Marine Studies, University of Delaware, in 1998. He has a long experience worked as an Ocean Scientist at the Lamont-Doherty Earth Observatory, Columbia University, USA, from 1998 to 2013. Currently, he is a Senior Research Scientist at the Department of Atmospheric and Oceanic Science, University of Maryland, USA. His expertise are in the ocean and climate dynamics of the Indo-Pacific region, especially related to Pacific-Indian Ocean Exchange/Indonesian Throughflow (ITF) dynamics.



ANINDYA WIRASATRIYA was born in Banyuwangi, in 1977. He received the B.S. degree from the Department of Marine Science, Universitas Diponegoro, Indonesia, in 2000, and the M.Sc. and Ph.D. degrees from the Department of Geophysics (Satellite Oceanography), Graduate School of Science, Tohoku University, Japan, in 2011 and 2015, respectively. He is currently an Associate Professor at the Department of Oceanography, Faculty of Fisheries and Marine Science, Universitas Diponegoro, where he was the Head of the Center for Coastal Rehabilitation and Disaster Mitigation Studies, from 2016 to 2017, and also the Head of the Oceanography Laboratory, from 2017 to 2020. He is also appointed as the Secretary of the Oceanography Study Program, Universitas Diponegoro. His expertise is related to the application of remote sensing for observing mesoscale air-sea interaction phenomena.



RAKHMA FITRIA LARASATI received the B.Sc. degree from Jakarta Fisheries University (Politeknik Ahli Usaha Perikanan Jakarta), Indonesia, in 2015, and the M.Sc. degree from the Department of Fisheries, Faculty of Agriculture, Universitas Gadjah Mada, Yogyakarta, Indonesia, in 2018. She is currently a Faculty Staff at the Politeknik Kelautan dan Perikanan Jembrana. Her research interest includes fish captures.