

# Corrections to “Noninvasive Imaging of the High Frequency Brain Activity in Focal Epilepsy Patients”

Yunfeng Lu, Gregory A. Worrell, Huishi Clara Zhang, Lin Yang, Benjamin Brinkmann, Cindy Nelson, and Bin He\*

Physical units in Figs 3–5 in [1] were found mistyped. The corrected figures are shown below.

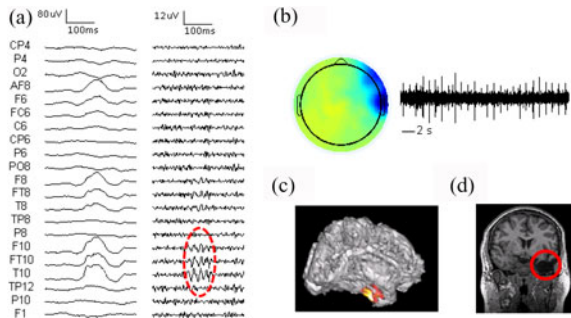


Fig. 3. Results in Patient 1. (a) *Left*: Raw EEG; *Right*: High-pass filtered EEG above 30 Hz. HF activity is marked with red circle. (b) Spatial map and temporal activation of one HF component. (c) Source imaging results of HF activity. (d) Surgical resection is highlighted in red.

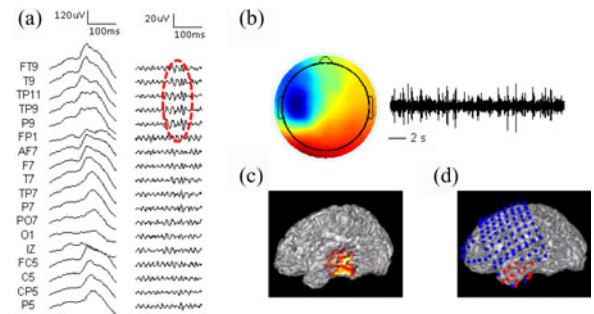


Fig. 5. Results in Patient 5. (a) *Left*: Raw EEG; *Right*: High-pass filtered EEG above 30 Hz. HF activity is marked with red circle. (b) Spatial map and temporal activation of one HF component. (c) Source imaging results of HF activity. (d) Seizure onset zone of intracranial recording is highlighted with red dots.

[1] Lu *et al.*, “Noninvasive imaging of the high frequency brain activity in focal epilepsy patients,” *IEEE Trans. Biomed. Eng.*, vol. 61, no. 6, pp. 1660–1667, Jun. 2014.

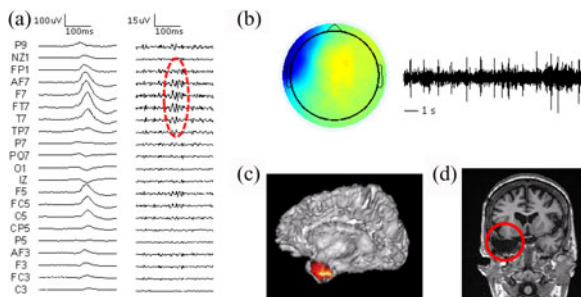


Fig. 4. Results in Patient 2. (a) *Left*: Raw EEG; *Right*: High-pass filtered EEG above 30 Hz. HF activity is marked with red circle. (b) Spatial map and temporal activation of one HF component. (c) Source imaging results of HF activity. (d) Surgical resection is highlighted in red.

Manuscript received June 25, 2015; accepted June 25, 2015. Date of publication July 16, 2015; date of current version July 15, 2015. Asterisk indicates corresponding author.

Y. Lu, H. C. Zhang, and L. Yang are with the Department of Biomedical Engineering, University of Minnesota, Minneapolis, MN 55455 USA (e-mail: luxxx273@umn.edu; zhan0947@umn.edu; yangx726@umn.edu).

G. A. Worrell, B. Brinkmann, and C. Nelson are with the Department of Neurology, Mayo Clinic, Rochester, MN 55901 USA (e-mail: worrell.gregory@mayo.edu; Brinkmann.Benjamin@mayo.edu; Nelson.Cindy@mayo.edu).

\*B. He is with the Department of Biomedical Engineering and the Institute for Engineering in Medicine, University of Minnesota, Minneapolis, MN 55455 USA (e-mail: binhe@umn.edu).

Color versions of one or more of the figures in this paper are available online at <http://ieeexplore.ieee.org>.

Digital Object Identifier 10.1109/TBME.2015.2450531