

Comments and Corrections

Corrections to “Characteristics of Aligned Carbon Nanofibers for Interconnect Via Applications”

Q. Ngo, A. M. Cassell, A. J. Austin, J. Li, S. Krishnan,
M. Meyyappan, and C. Y. Yang

In this letter [1], Fig. 1(c) was incorrect. The angle should be labeled with the Greek letter α rather than the Greek letter θ . In addition, to guarantee that there is no ambiguity in the angle definition used in the original text, the formula $\theta = 90 - \alpha$ has been inserted into the figure caption.

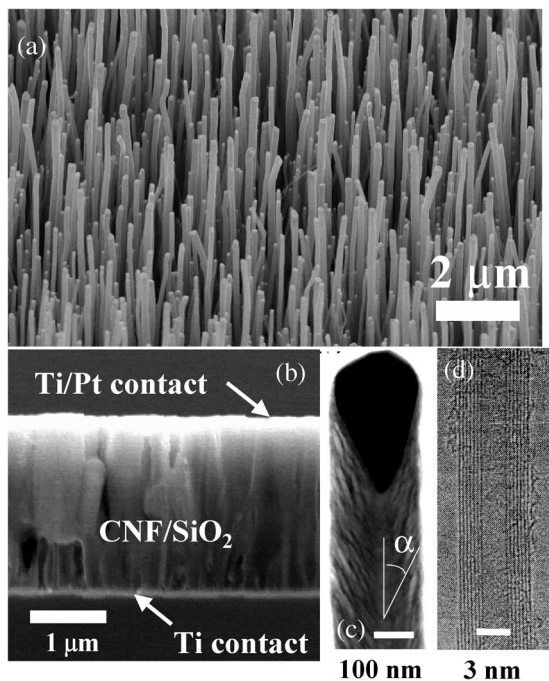


Fig. 1. (a) As-grown vertically aligned CNF array. (b) CNF array embedded in SiO_2 for temperature-dependent measurement. (c) STEM image of single-carbon nanofiber showing stacked-cone morphology. α is the CNF cone angle. The complementary cone angle is $\theta = 90 - \alpha$. (d) TEM image of single-carbon nanotube showing well-ordered graphite sheets parallel to the tube axis [13].

REFERENCES

- [1] Q. Ngo, A. M. Cassell, A. J. Austin, J. Li, S. Krishnan, M. Meyyappan, and C. Y. Yang, “Characteristics of aligned carbon nanofibers for interconnect via applications,” *IEEE Electron Device Lett.*, vol. 27, no. 4, pp. 221–224, Apr. 2006.