

### Correction to “Nondistorting Flattened Maps and the 3-D Visualization of Colon CT Images”

Steven Haker, Sigurd Angenent, and Allen Tannenbaum

In the above paper,<sup>1</sup> Figs. 2–5 should have appeared in color as shown here.



Fig. 2. Segmented colon and flattened representation.

Manuscript received 9/21/00.

S. Haker is with the Department of Diagnostic Radiology and the Department of Computer Science, Yale University, New Haven, CT 06520 USA (e-mail: haker@cs.yale.edu).

S. Angenent is with the Department of Mathematics, University of Wisconsin, Madison, WI 53705 USA.

A. Tannenbaum is with the Department of Electrical and Computer Engineering and the Department of Biomedical Engineering, Georgia Institute of Technology, Atlanta, GA 30332-0250 USA (e-mail: tannenbaum@ece.gatech.edu).

Publisher Item Identifier S 0278-0062(00)11720-3.

<sup>1</sup>S. Haker, S. Angenent, and A. Tannenbaum, *IEEE Trans. Med. Imag.*, vol. 19, pp. 665–670, July 2000.

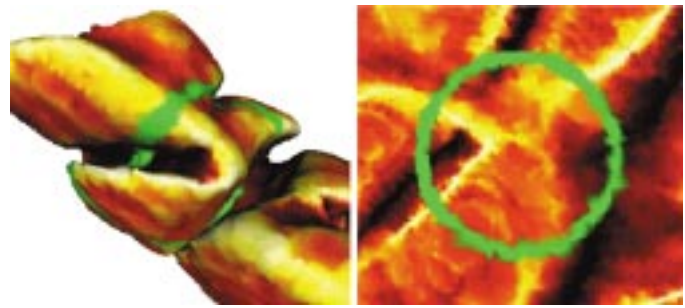


Fig. 3. Region of interest and flattened representation.

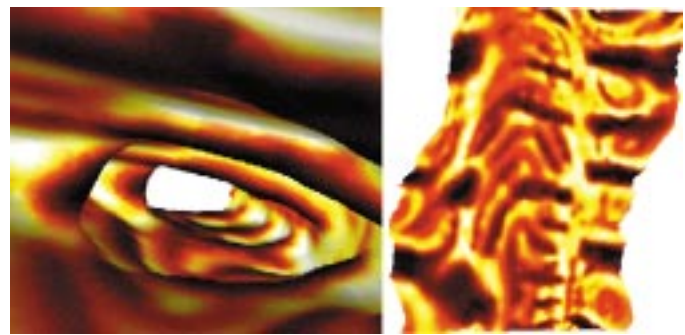


Fig. 4. “Fly-through” view and flattened representation.

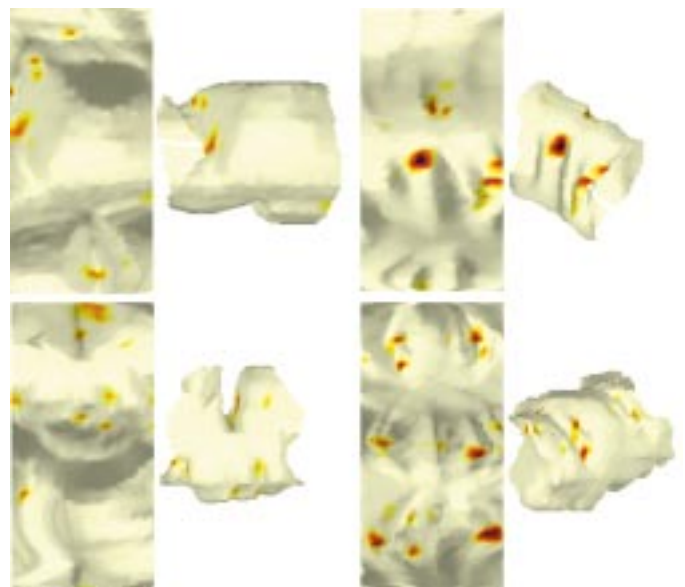


Fig. 5. Frames from distortion-correcting cine with original surface.